

Drake House

76 Marsham Street, Westminster, SW1P 4LY

Asking Price £700,000



1



1

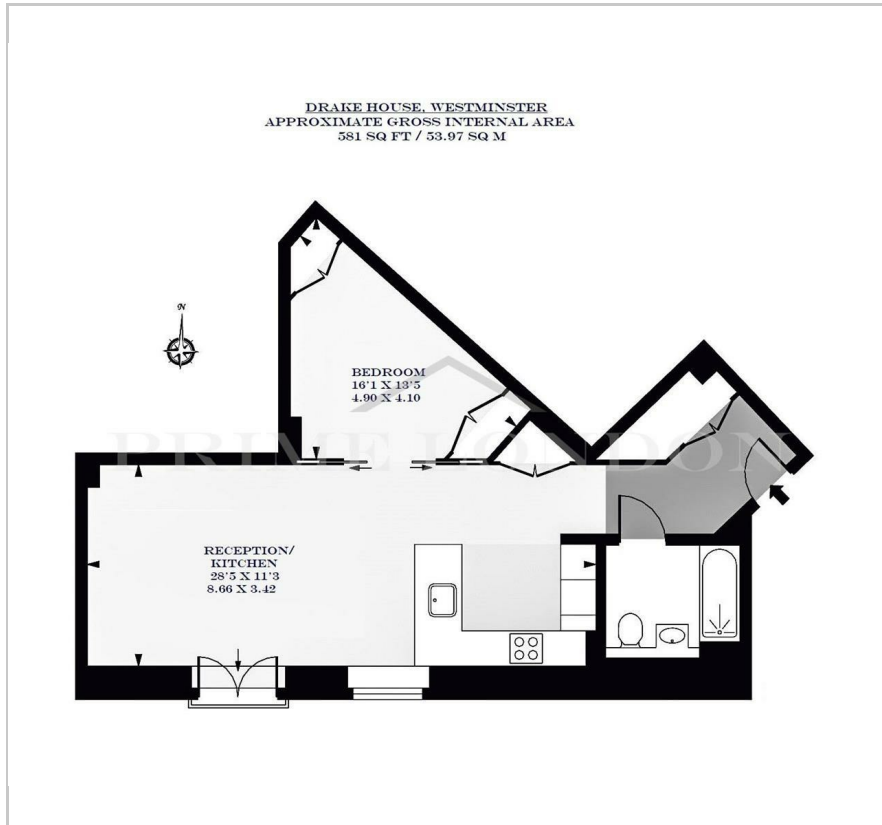


1



B

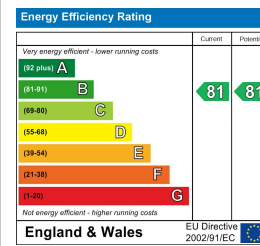
Floor Plan



Area Map



Energy Efficiency Graph



Viewing

By appointment. Contact us on 0207 052 1075 if you wish to arrange a viewing appointment for this property, or require further information.

- Highest floor manhattan style ■ 581 sq ft (53.97 sqm) apartment
- Juliet balcony ■ Recently redecorated
- Prestigious Westminster ■ 24 hour concierge service building



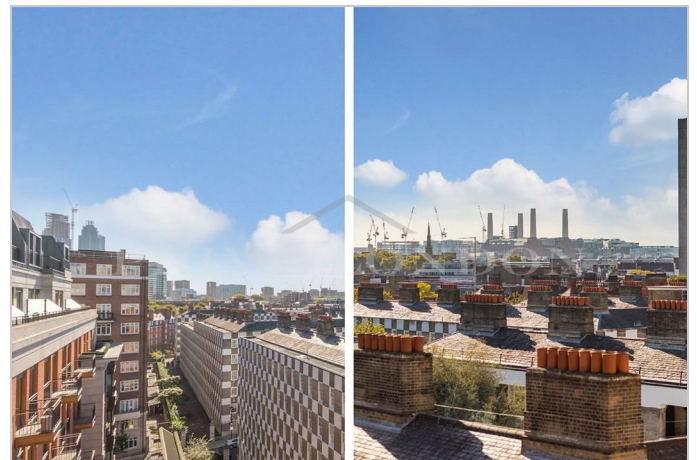
This superb recently redecorated apartment, with exceptionally high quality finishes and set on the top floor of the sought after Drake House in Westminster, is available for chain free sale through Prime London.

This impressive apartment benefits from being set above the surrounding buildings and as such enjoys plenty of natural light and great south facing views. The property also features herringbone wooden flooring, a Juliet balcony and comfort cooling.

Residents benefit from a grand entrance lobby, lifts and a 24 hour concierge service.

Drake House on Marsham Street is set right in the heart of Westminster, providing direct access to the parliamentary buildings such as the Houses of Parliament and Westminster Abbey.

There is also easy access to the green open spaces of St James's Park and Green Park as well as the transport links of Victoria station (Victoria, District and Circle lines, National Rail and the Gatwick Express). Nearby Westminster underground station provides the Jubilee line, which offers a swift ride to Canary Wharf. Pimlico and the numerous shops and restaurants found on Horseferry Road and Victoria Street are all within easy reach.



These particulars, whilst believed to be accurate are set out as a general outline only for guidance and do not constitute any part of an offer or contract. Intending purchasers should not rely on them as statements of representation of fact, but must satisfy themselves by inspection or otherwise as to their accuracy. No person in this firm's employment has the authority to make or give any representation or warranty in respect of the property.