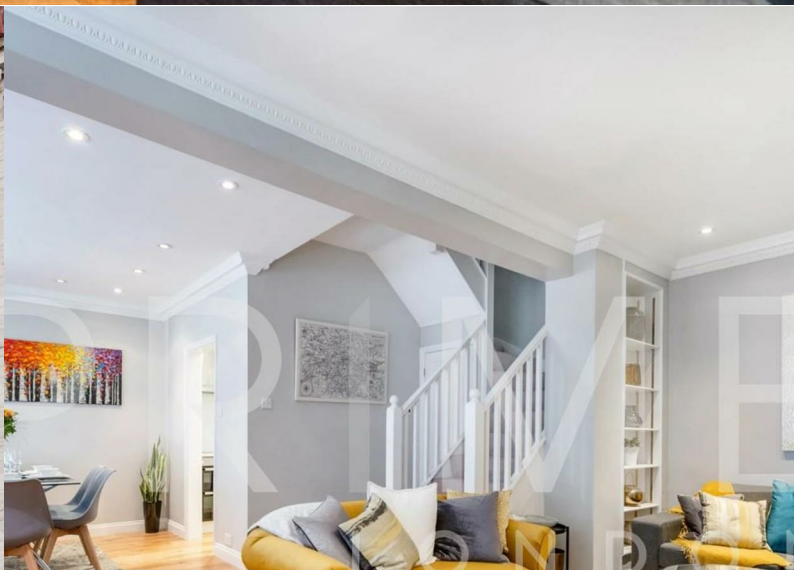


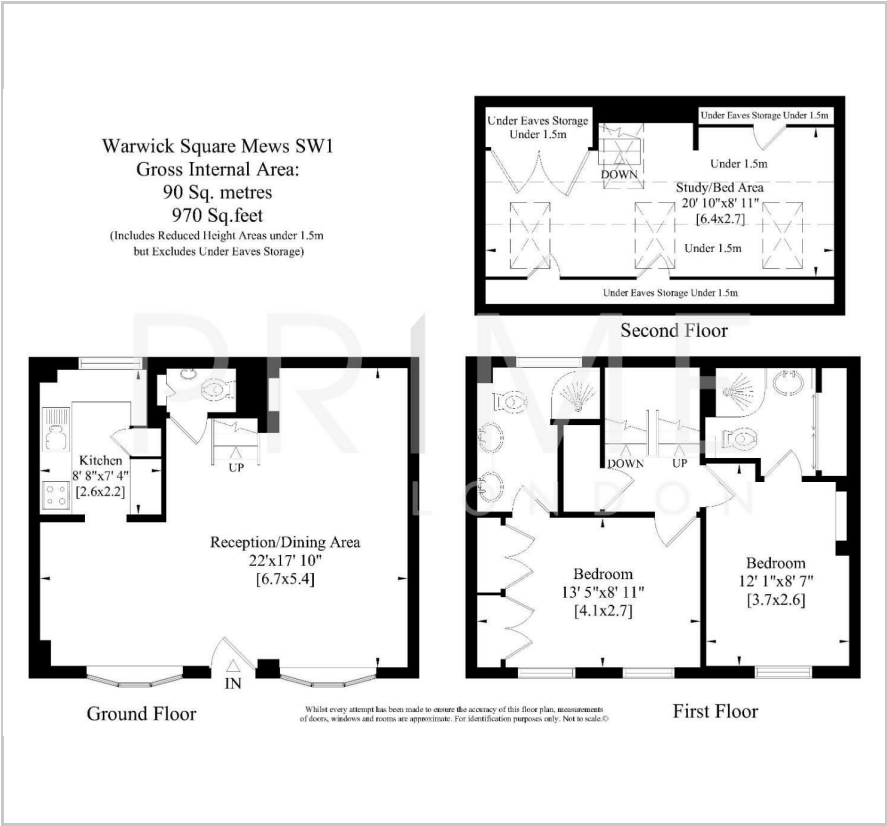
Warwick Square Mews

Pimlico, SW1V 2EL

£850 Per Week



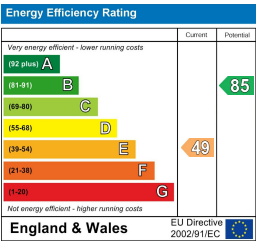
Floor Plan



Area Map



Energy Efficiency Graph



Viewing

By appointment. Contact us on 0207 052 1075 if you wish to arrange a viewing appointment for this property, or require further information.

- Beautifully appointed Mews ■ Excellently located house
- Grapevine and wild rose ■ Two/Three Bedrooms covered mews
- Private off street parking ■ Unfurnished

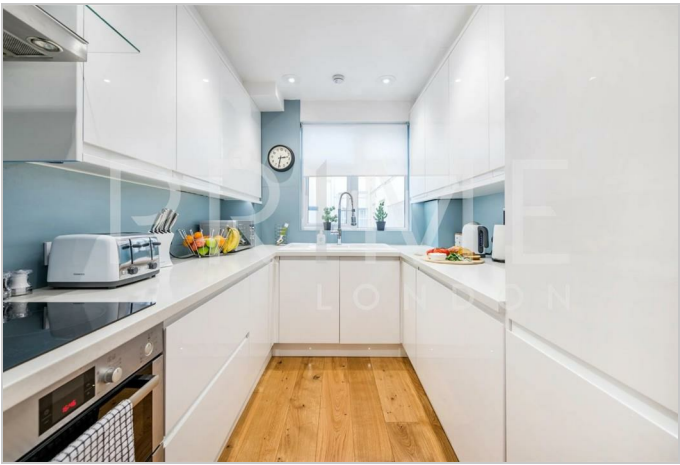


Located in this picturesque grapevine and wild rose covered mews, a beautifully appointed two/three-bedroom house, boasting two en-suite bathrooms and private parking, available for lease exclusively through Prime London.

This gem has been recently modernized and extended to a generous 970 sq ft (90 sqm). Standing out as one of the rare three-storey houses in this charming mews, it features an upper eaves room, perfect for use as an office, a cozy snug, or even an exciting bedroom for little ones.

This property enjoys a superb location, being in close proximity to the vibrant shopping hub of Wilton Road and the delightful Pimlico Village.

With Victoria station for seamless transport connections and the fashionable shops, bars, and restaurants of Belgravia and Sloane Square just a stone's throw away, this home is versatile enough to serve as a family retreat, a comfortable professional let, or a character-filled London base.



These particulars, whilst believed to be accurate are set out as a general outline only for guidance and do not constitute any part of an offer or contract. Intending purchasers should not rely on them as statements of representation of fact, but must satisfy themselves by inspection or otherwise as to their accuracy. No person in this firm's employment has the authority to make or give any representation or warranty in respect of the property.