

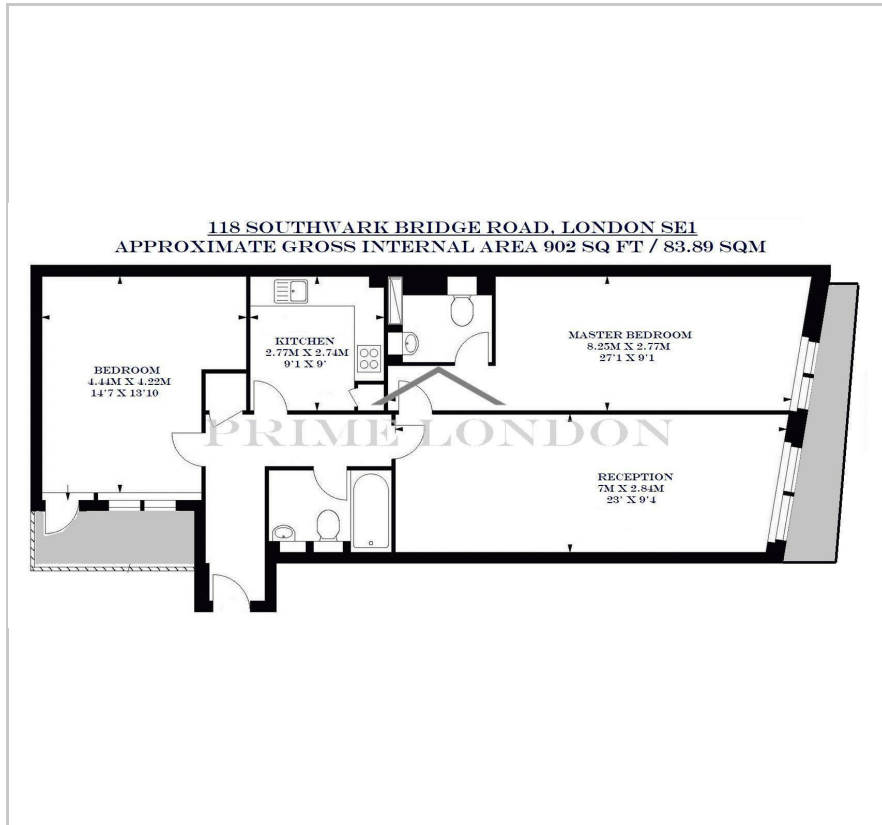
118 Southwark Bridge Road

Borough, SE1 0BQ

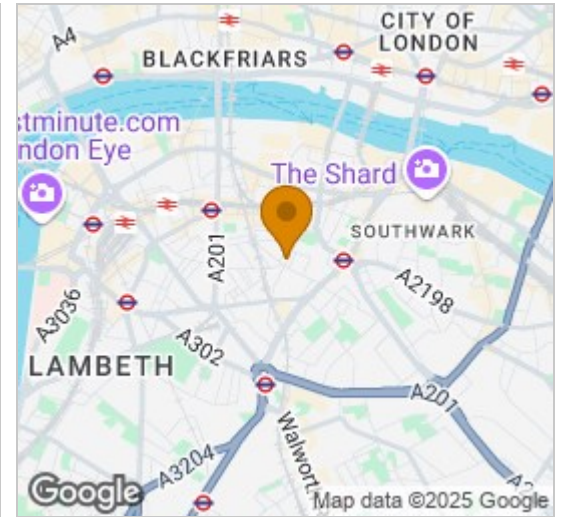
£625 Per Week



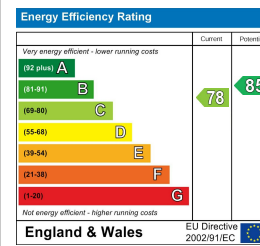
## Floor Plan



## Area Map



## Energy Efficiency Graph



## Viewing

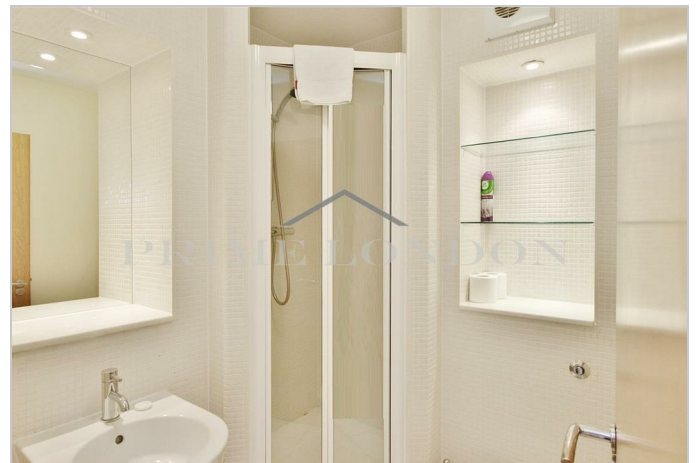
By appointment. Contact us on 0207 928 6663 if you wish to arrange a viewing appointment for this property, or require further information.

- Extremely generous
- Close to Borough High Street
- Fully furnished
- 903 sq ft
- Within easy reach of Borough and London Bridge stations

An extremely generous 903 sq ft two bedroom two bathroom (master en suite) apartment on the fourth floor (with lift), available for lease exclusively through Prime London within this impressive development on Southwark Bridge Road, SE1.

The accommodation includes an extremely large reception room naturally lit by the large windows, separate high spec kitchen featuring granite worktops and high gloss storage units and sizeable individual bedrooms.

The property further enjoys use of two private balconies. Situated close to Borough High Street and within easy reach of Borough and London Bridge stations, the property is ideally situated for all pleasure and travel pursuits.



These particulars, whilst believed to be accurate are set out as a general outline only for guidance and do not constitute any part of an offer or contract. Intending purchasers should not rely on them as statements of representation of fact, but must satisfy themselves by inspection or otherwise as to their accuracy. No person in this firm's employment has the authority to make or give any representation or warranty in respect of the property.