




Parliament View Apartments

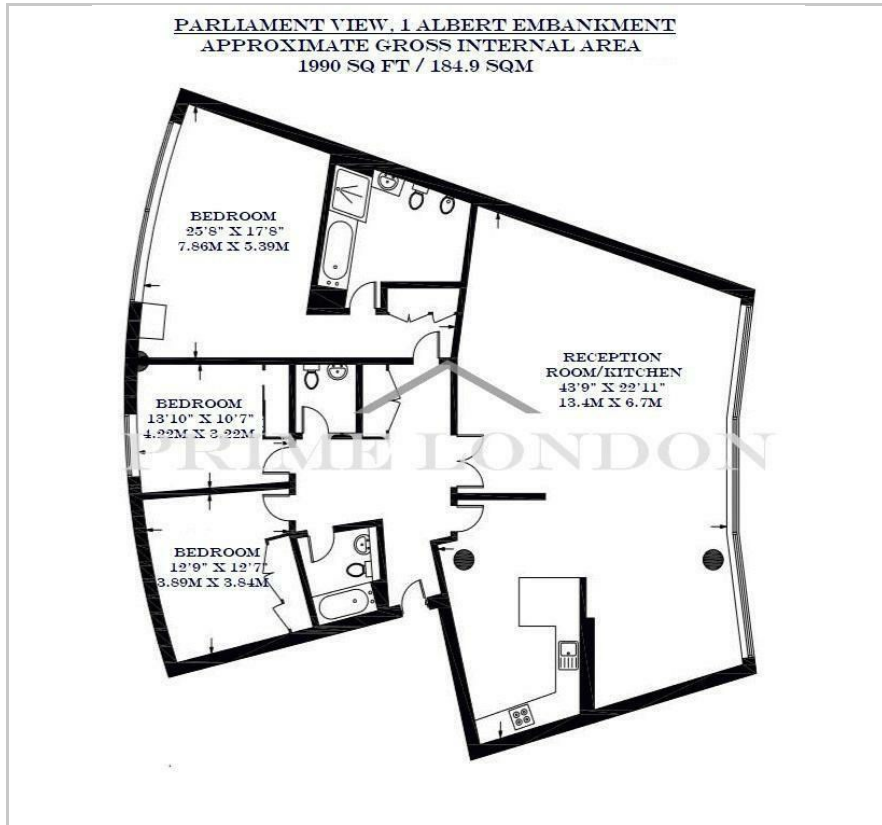
Albert Embankment, SE1 7XL

Offers Over £3,000,000



-  3
-  2
-  1
-  C

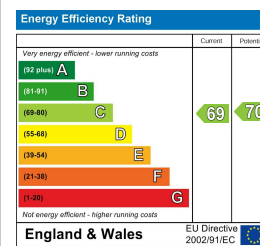
Floor Plan



Area Map



Energy Efficiency Graph



Viewing

By appointment. Contact us on 0207 928 6663 if you wish to arrange a viewing appointment for this property, or require further information.

- Penthouse apartment
- Truly stunning views
- 1990 sq ft / 184.9 sq m
- Chain free
- Residents gym
- 24 hour concierge service

This superb Penthouse apartment, with exceptional views of the Houses of Parliament, Big Ben, London Eye and River Thames, set within the excellent Parliament View Apartments, is available for chain free sale through Prime London. The property also comes with two secure underground parking spaces.

The 1990 sq ft / 184.9 sq m apartment comprises a large reception with floor to ceiling windows at the front of the property showcasing some of the best views in London, a semi separated fully fitted modern kitchen, three double bedrooms with ample and intelligently designed storage (including a main bedroom with large en-suite bathroom) - all with tranquil views towards the rear of the development.

There is also a second contemporary bathroom as well as a separate WC. Further benefits include wooden flooring throughout and air cooling. Parliament View itself offers a 24 hour concierge service, residents' gymnasium and an excellent location on the river between Lambeth and Vauxhall Bridge. As a result the development is within easy reach of the West End, Westminster, the City and South Bank. Vauxhall rail and underground station.



These particulars, whilst believed to be accurate are set out as a general outline only for guidance and do not constitute any part of an offer or contract. Intending purchasers should not rely on them as statements of representation of fact, but must satisfy themselves by inspection or otherwise as to their accuracy. No person in this firm's employment has the authority to make or give any representation or warranty in respect of the property.