

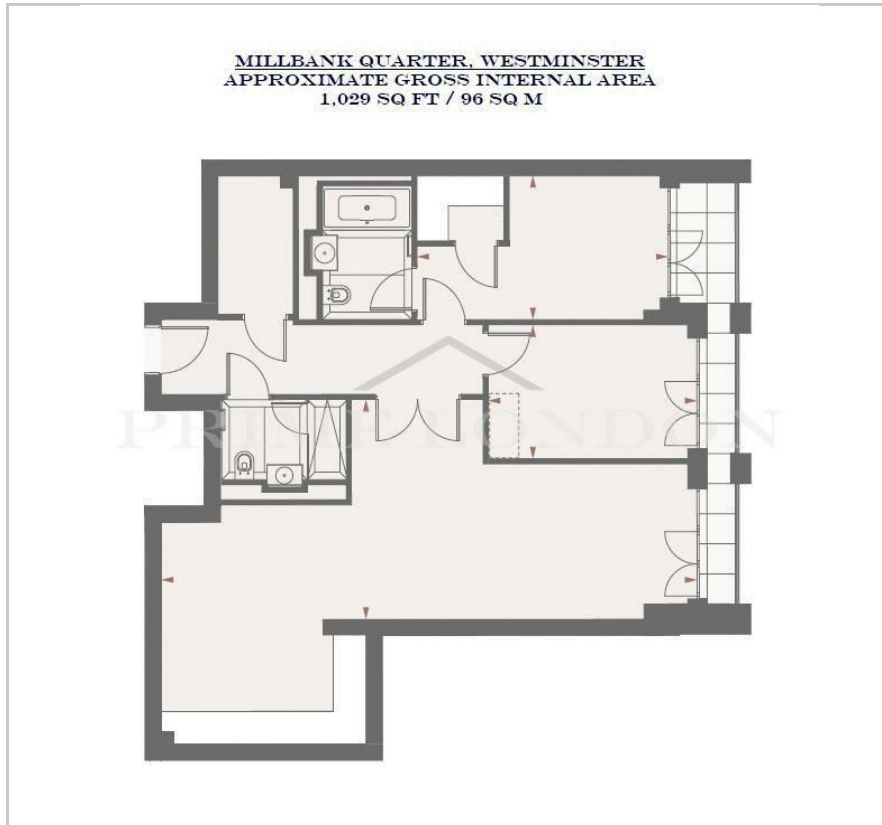
Millbank Quarter

Westminster, 9 Millbank, SW1P 3GE

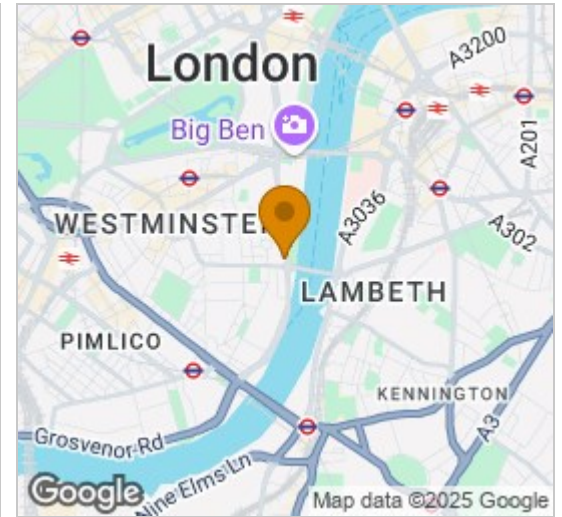
£1,580 Per Week



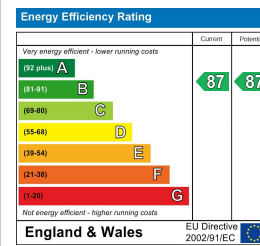
Floor Plan



Area Map



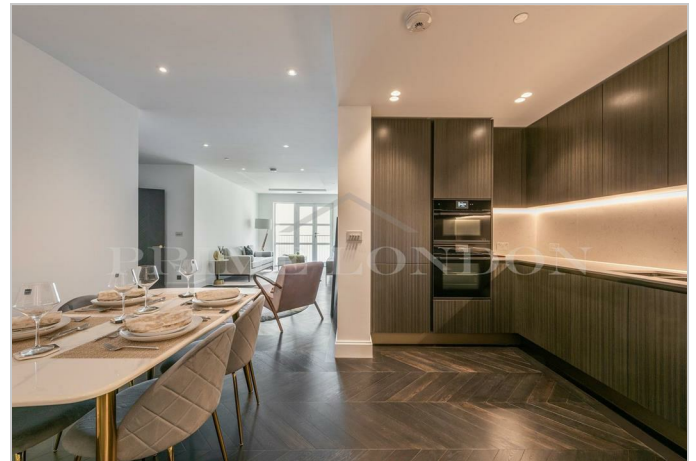
Energy Efficiency Graph



Viewing

By appointment. Contact us on 0207 052 1075 if you wish to arrange a viewing appointment for this property, or require further information.

- Two bedroom apartment
- Full length private terrace
- Private cinema screening room, and meeting rooms
- State-of-the-art gym, luxurious pool with spa and treatment room
- 1,029 sq ft (96 sqm)
- Elegant finishes throughout
- Best position in development and meeting rooms
- 24-hour concierge



This excellently positioned two bedroom garden facing apartment with private terrace, set within the most popular local development, 9 Millbank, is available to rent through Prime London.

Set in the best position facing the tranquil landscaped gardens, this is the ideal two bedroom and offers a peaceful view from your private terrace.

The spacious reception room benefits from interior design that highlights the heritage of the development, but with the height of modern elegance, and the open plan kitchen with Küppersbusch appliances and expertly crafted finishes complete the space. Both double bedrooms also enjoy views over the peaceful, private landscaped garden and the main bedroom also features a large walk-in wardrobe.

The property also benefits from having two bathrooms, one of which is en-suite. For residents' comfort, all properties in 9 Millbank have underfloor heating throughout, and comfort cooling to all reception rooms and bedrooms.

Leisure facilities exclusive to the residents at 9 Millbank include a 24-hour concierge, a state-of-the-art gym, luxurious swimming pool with spa and treatment room, private cinema screening room, meeting rooms, and landscaped gardens. Standing proudly on the banks of the river Thames, in the beating heart of historic Westminster, 9 Millbank encapsulates British luxury and style. Now a Grade II listed building, Millbank Residences' grandeur still stands tall in Westminster's iconic skyline.



These particulars, whilst believed to be accurate are set out as a general outline only for guidance and do not constitute any part of an offer or contract. Intending purchasers should not rely on them as statements of representation of fact, but must satisfy themselves by inspection or otherwise as to their accuracy. No person in this firm's employment has the authority to make or give any representation or warranty in respect of the property.