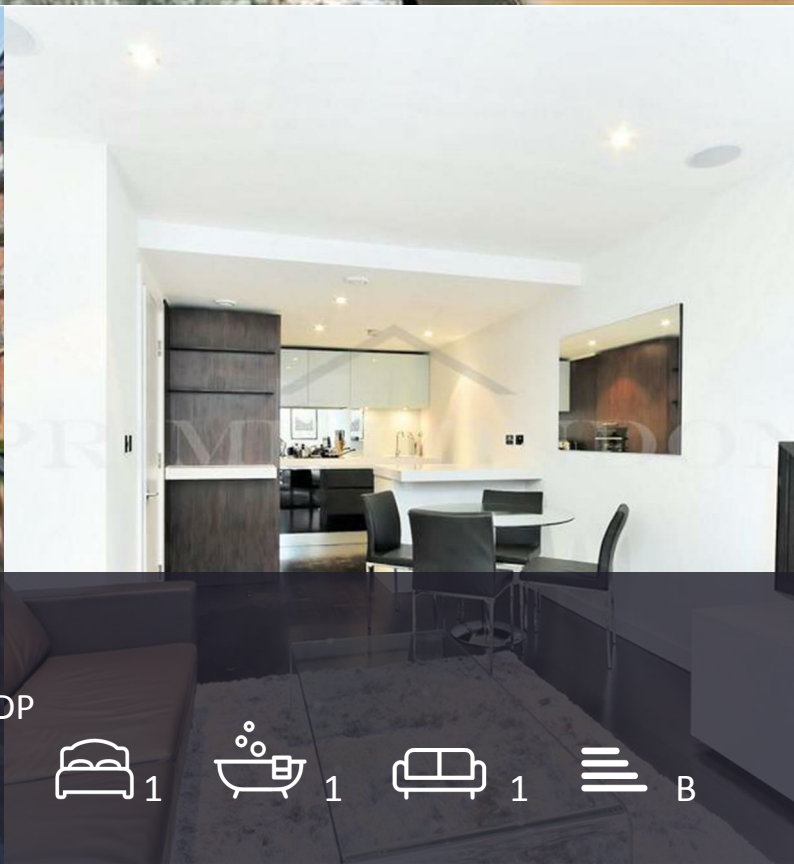




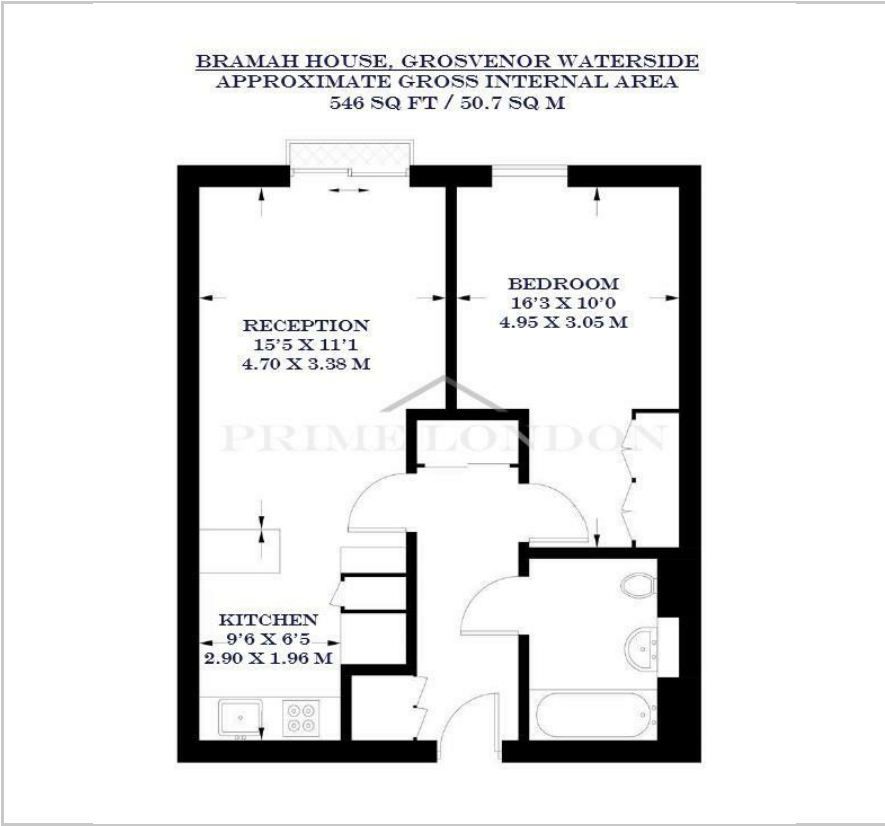
Bramah House

Grosvenor Waterside, 9 Gatliff Road, SW1W 8DP

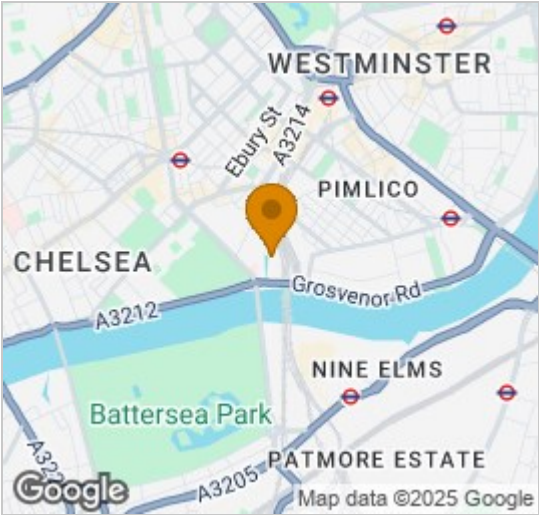
£575 Per Week



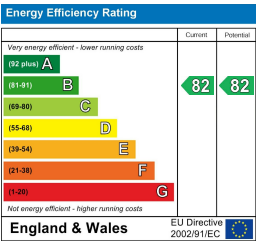
Floor Plan



Area Map



Energy Efficiency Graph



Viewing

By appointment. Contact us on 0207 052 1075 if you wish to arrange a viewing appointment for this property, or require further information.

- One bedroom apartment in ■ 546 sq ft (50.7 sqm) Chelsea
- Open plan kitchen and Juliet ■ Resident's gym and spa balcony
- Close proximity to Battersea ■ 24 hour concierge Power Station



This one-bedroom apartment in the popular development of Grosvenor Waterside, located in Chelsea, is available for lease through Prime London.

Totalling 546 sq ft (50.7 sqm), this property features an open plan kitchen, complete with an island. The reception room opens up to a Juliet balcony, providing a lovely view of the surrounding green areas. The apartment includes a good sized bedroom, a bathroom and the added benefit of wardrobes.

Residents of Grosvenor Waterside benefit from a gym, spa, and 24-hour concierge services.

Situated on the north side of the river by Chelsea Bridge, the open spaces of Battersea Park are also close by. The Victoria mainline and underground station (Victoria, Circle and District lines, zone 1) is also within close proximity.

Grosvenor Waterside is located just half a mile away from Sloane Square underground station and within easy walking distance of fashionable Kings Road.



These particulars, whilst believed to be accurate are set out as a general outline only for guidance and do not constitute any part of an offer or contract. Intending purchasers should not rely on them as statements of representation of fact, but must satisfy themselves by inspection or otherwise as to their accuracy. No person in this firms employment has the authority to make or give any representation or warranty in respect of the property.