



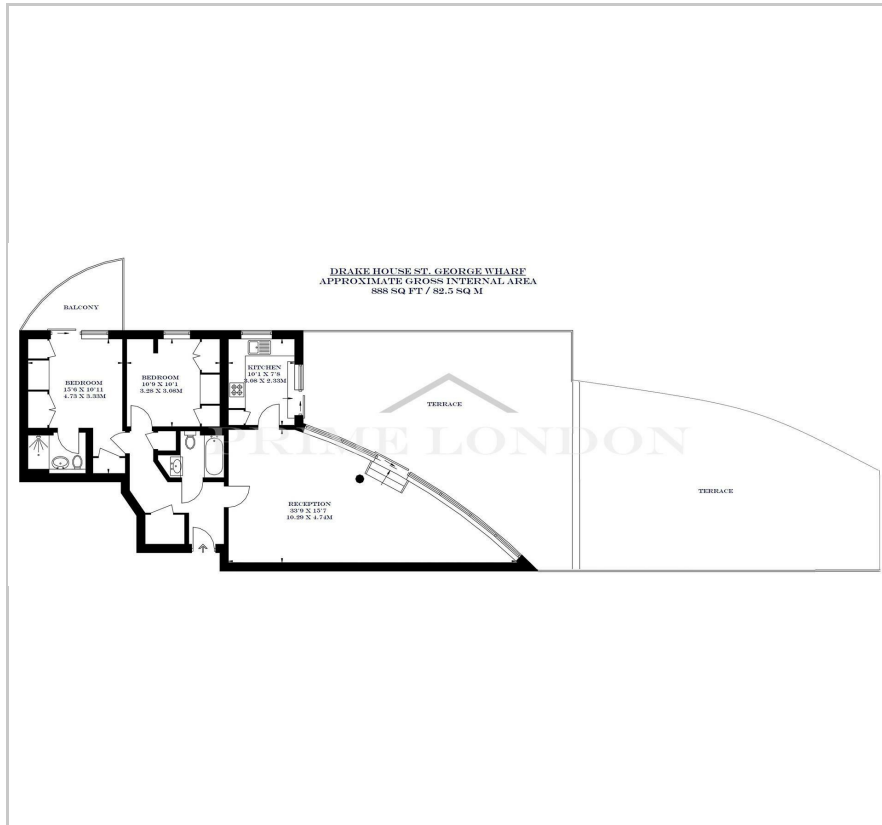
Drake House

St. George Wharf, Vauxhall, SW8 2LS

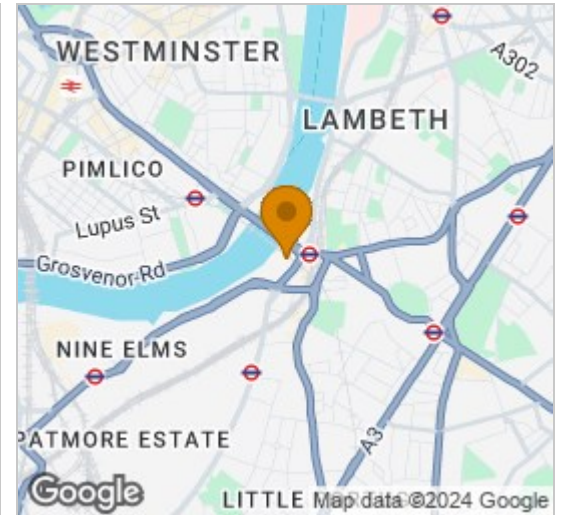
£775 Per Week



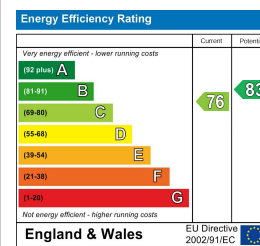
Floor Plan



Area Map



Energy Efficiency Graph

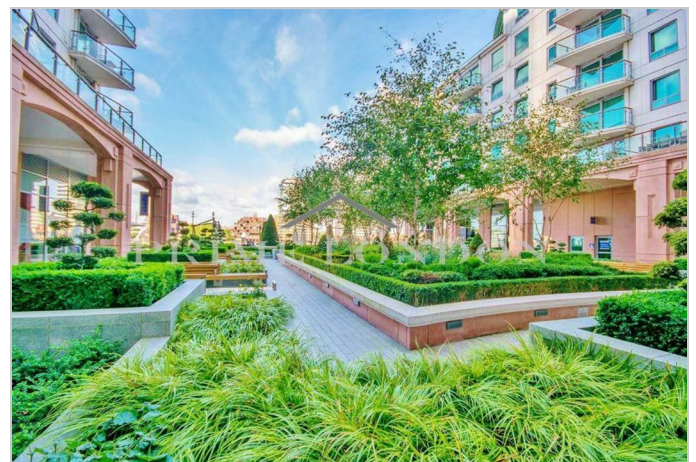


Viewing

By appointment. Contact us on 0207 928 6663 if you wish to arrange a viewing appointment for this property, or require further information.

- Fantastic views of the River Thames
- Excellent position and aspect
- Chain free and EWS1 compliant
- 888 sq ft / 82.5 Sq m (internal space)
- Huge private terrace and curved reception
- 24 hour concierge

With one of the largest waterfront terraces in the city with fantastic views up and down the River Thames, this spacious two bedroom two bathroom apartment is available for chain free sale through Prime London. The property offers an excellent position and aspect within this excellently located riverside development, St. George Wharf. Comprising a large curved reception with access to the enormous terrace, a fully fitted and modern kitchen, two spacious double bedrooms, two modern bathrooms (one of which are en suite), and a further balcony coming off one of the bedrooms. This apartment benefits from the fantastic transport links afforded by this very well kept complex by The River Thames. St George Wharf offers on site riverside bars and restaurants such as Waterfront London, The Riverside, Four Degree and Pop Art Sushi as well as direct access to Vauxhall Underground Station on the Victoria Line. For additional convenience other on site outlets include Tesco Express, Pret a Manger, Hudson's Dry Cleaners, Riverside Medical Centre & Dental Spa and more.



These particulars, whilst believed to be accurate are set out as a general outline only for guidance and do not constitute any part of an offer or contract. Intending purchasers should not rely on them as statements of representation of fact, but must satisfy themselves by inspection or otherwise as to their accuracy. No person in this firm's employment has the authority to make or give any representation or warranty in respect of the property.