

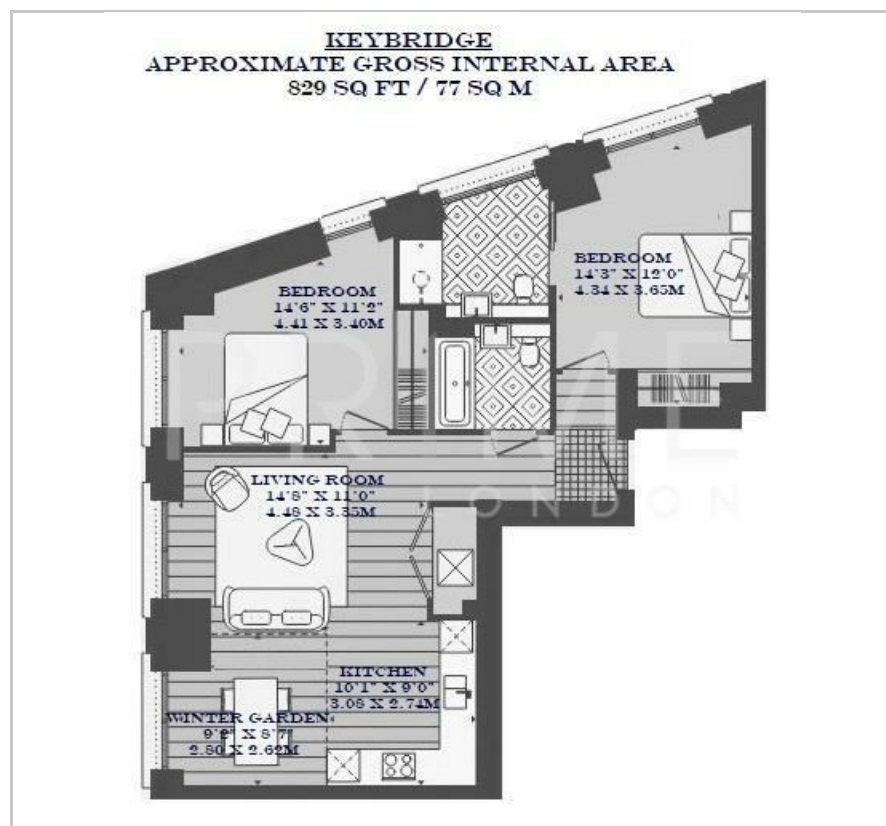
## Keybridge Tower

1 Exchange Gardens, Vauxhall, SW8 1BN

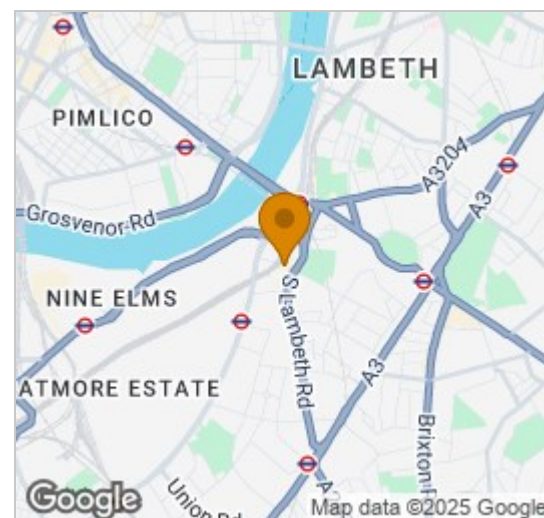
Asking Price £1,150,000



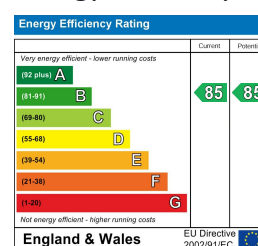
## Floor Plan



## Area Map



## Energy Efficiency Graph



## Viewing

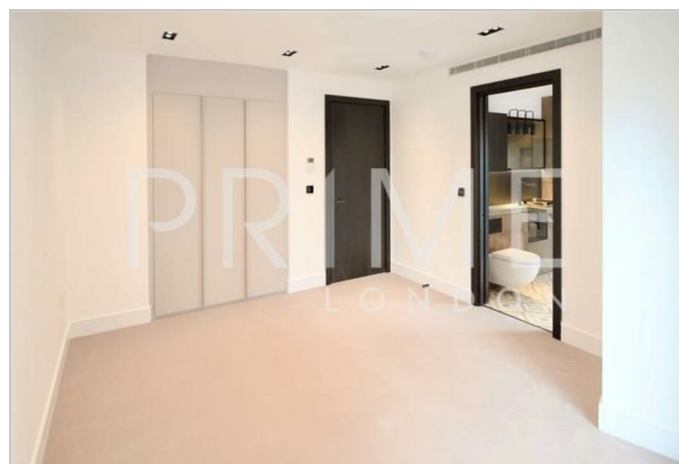
By appointment. Contact us on 0207 928 6663 if you wish to arrange a viewing appointment for this property, or require further information.

- Two bedroom apartment
- 829 sqft/ 77 sqm
- 24 hour concierge
- Residents pool, spa and Gym
- Close to public transport
- Comfort cooling links

This high specification two bedroom, two bathroom apartment is set within the highly desirable Keybridge development, and is available for chain free sale through Prime London.

This 829sqft / 77 sqm apartment offers an open plan living room and kitchen, smart integrated kitchen, a master bedroom with an ensuite, a spacious double bedroom, with a luxury family bathroom. The apartment is well designed to be lived in and enjoyed. The property also benefits from having comfort cooling and underfloor heating.

Residents will benefit from a 24 hour concierge service, 15 metre swimming pool, a club lounge and communal gardens, all within walking distance of Zone 1 transport links.



These particulars, whilst believed to be accurate are set out as a general outline only for guidance and do not constitute any part of an offer or contract. Intending purchasers should not rely on them as statements of representation of fact, but must satisfy themselves by inspection or otherwise as to their accuracy. No person in this firm's employment has the authority to make or give any representation or warranty in respect of the property.

Palace View, 131 Lambeth Road, London SE1 7BT | 21 Grosvenor Gardens, Belgravia, London SW1W 0BP

Tel: 0207 928 6663 | 0207 052 1075 Email: [Office@PrimeLondonResidential.com](mailto:Office@PrimeLondonResidential.com) [www.PrimeLondonResidential.com](http://www.PrimeLondonResidential.com)