

Three Riverlight Quay

Nine Elms, SW11 8BF

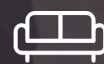
£1,384 Per Week



2



2

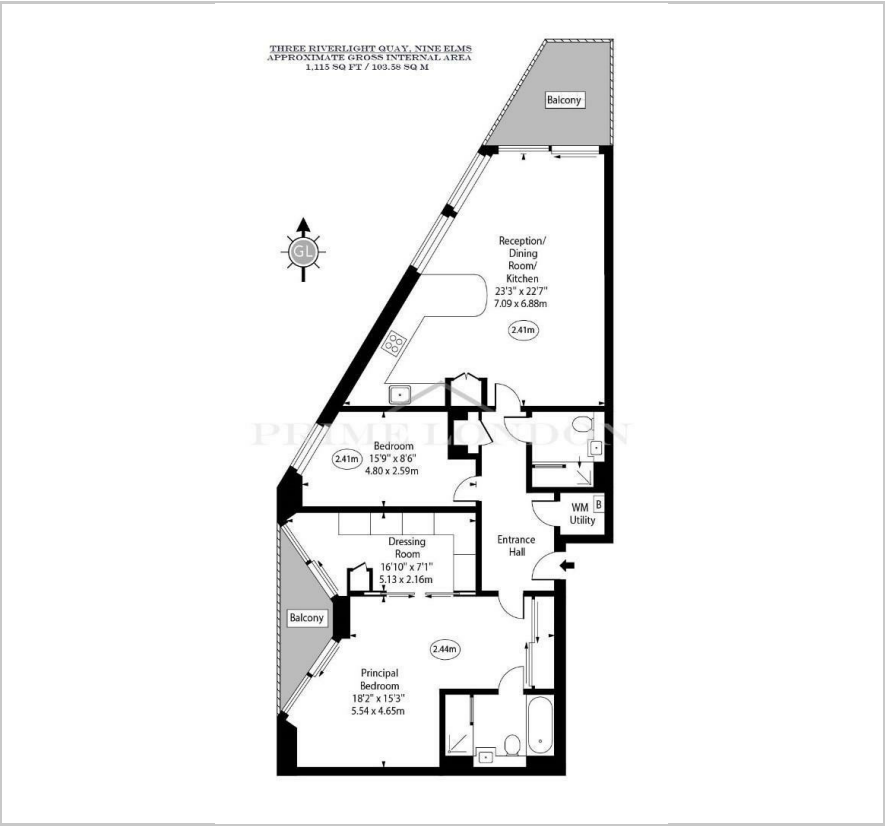


1



B

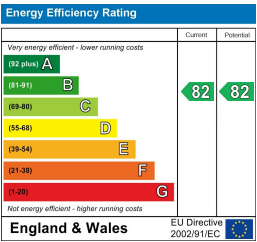
Floor Plan



Area Map



Energy Efficiency Graph



Viewing

By appointment. Contact us on 0207 928 6663 if you wish to arrange a viewing appointment for this property, or require further information.

- Bespoke two bedroom apartment
- Directly facing the River Thames
- Secure parking space
- Resident's gym, pool, jacuzzi, sauna and golf room
- 1,108 sq ft / 102.09 sq m
- Fully furnished
- Fully updated and interior designed
- 24 hour concierge

This bespoke one-of-a-kind two bedroom apartment of 1,108 sq ft (102.09 sqm), positioned in the front row position of Riverlight Quay, on a high floor with fantastic views of the River Thames, is available for fully furnished lease through Prime London. The property also comes with a secure parking space.

This apartment offers high-specification luxurious finishes throughout and further benefits from having two balconies, a bespoke kitchen, a full dressing room and an en-suite to primary bedroom, comfort cooling and under-floor heating.

An exclusive on-site resident's Clubhouse offers a unique third space between home and work which to socialise, exercise and be entertained, from a private screening room to virtual golf facilities; a residents club lounge and library and a 15m swimming pool, state-of-the-art gymnasium and spa.

Riverlight Quay offers a vibrant mix of leisure and retail facilities at street level, including cafes, bar and restaurant, grocery shopping and creche.



These particulars, whilst believed to be accurate are set out as a general outline only for guidance and do not constitute any part of an offer or contract. Intending purchasers should not rely on them as statements of representation of fact, but must satisfy themselves by inspection or otherwise as to their accuracy. No person in this firm's employment has the authority to make or give any representation or warranty in respect of the property.