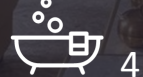


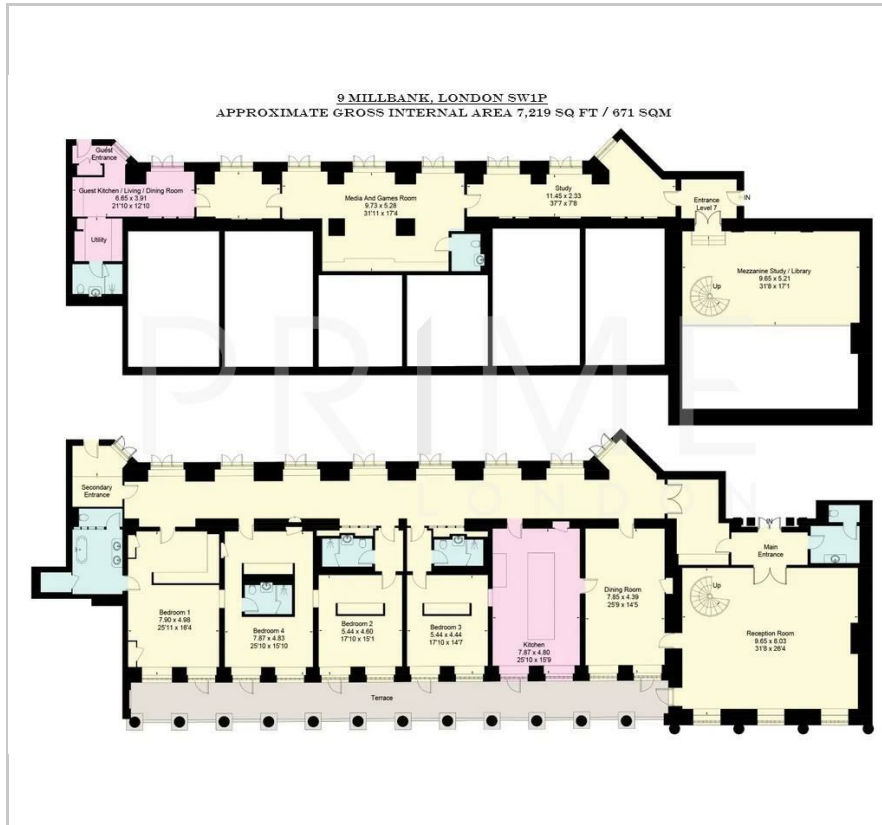
9 Millbank

Westminster, SW1P 3GE

£17,500,000



Floor Plan



Area Map



Energy Efficiency Graph

Viewing

By appointment. Contact us on 0207 052 1075 if you wish to arrange a viewing appointment for this property, or require further information.

- Duplex Penthouse
- 7,219 sq ft / 671 sqm
- 98 ft private stone terrace
- Private cinema screening room, and meeting rooms
- State-of-the-art gym,
- 24-hour concierge
- Luxurious pool with spa and treatment room



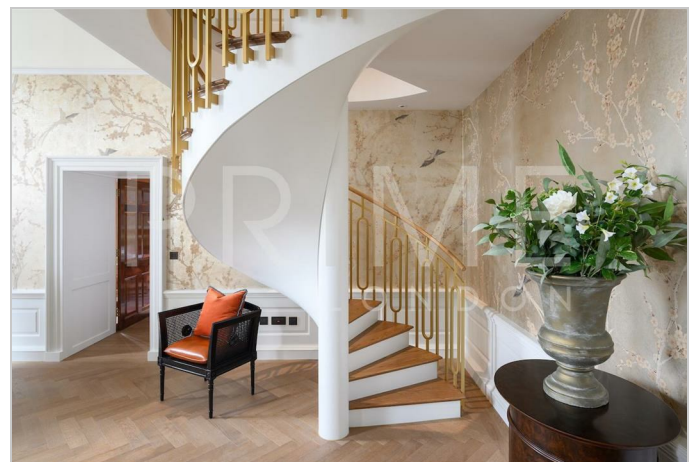
The Conrad is a stunning duplex penthouse located in a historic 1920s Grade II-listed building on the banks of the Thames. The apartment combines thoughtful interior design with the building's original features, seamlessly blending them with a wide range of modern amenities. The Conrad preserves the original decorative plasterwork and wooden paneling, spread across a generous 7,219 sq ft (671 sqm).

The spacious double-height living room features a sculptural spiral staircase leading to a sophisticated mezzanine area, ideal as a cozy second living space or study. This elegant room, reminiscent of classic 1920s architecture, is perfect for large-scale entertaining. The kitchen exudes classical elegance with high-end appliances, stone countertops, and original wood paneling. Adjacent to the kitchen is a dining room with a vaulted ceiling and beautiful views, perfect for hosting dinner parties.

On the sixth floor, there are four ensuite bedrooms. A fifth bedroom, complete with an adjoining kitchen, living area, and utility/bathroom, serves as excellent staff or guest accommodation. The upper floor also features a large cinema and games room next to a peaceful study.

A private 98-foot stone terrace, characterised by neoclassical grandeur, surrounds the apartment, offering breathtaking views of the Thames and the Houses of Parliament.

The building boasts exceptional amenities, including a pool, spa, fully equipped gym, cinema room, and full



These particulars, whilst believed to be accurate are set out as a general outline only for guidance and do not constitute any part of an offer or contract. Intending purchasers should not rely on them as statements of representation of fact, but must satisfy themselves by inspection or otherwise as to their accuracy. No person in this firm's employment has the authority to make or give any representation or warranty in respect of the property.