

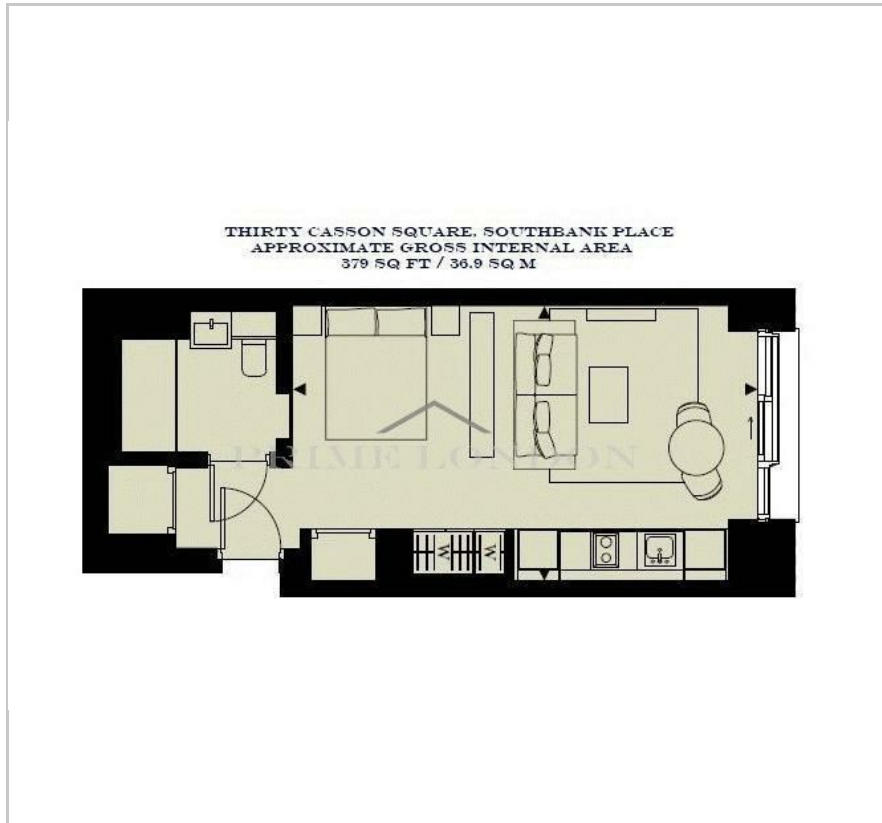
Thirty Casson Square

Southbank Place, SE1 7GY

£646 Per Week



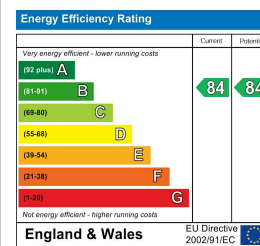
Floor Plan



Area Map



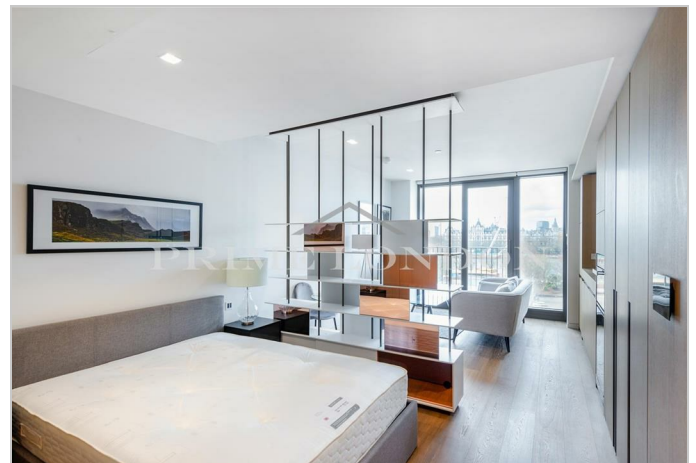
Energy Efficiency Graph



Viewing

By appointment. Contact us on 0207 928 6663 if you wish to arrange a viewing appointment for this property, or require further information.

- Modern studio apartment
- Fully furnished
- Excellent central location
- Exclusive residents lounge and private dining area
- Residents health club and restorative spa
- 24 hour concierge

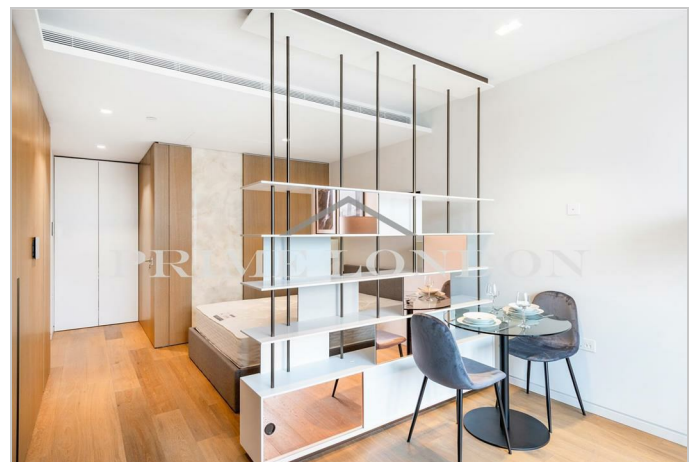


This superb luxury studio apartment in Southbank Place offers 397 sq ft of internal space, a Juliet balcony and excellent finishes throughout, and is available to rent through Prime London.

The apartment interiors blend traditional and modern approaches with combinations of high quality natural materials creating harmonious and durable interiors. The bespoke designed kitchen with carefully selected finishes and high quality integrated Miele appliances are an excellent touch, and a luxurious bathroom finished with polished stone throughout, high specification fittings and Dornbracht brassware complete the apartment.

Residents at Southbank Place benefit from the highest quality of living, with access to the residents' only amenities floor, which includes his and hers steam and sauna rooms, a gymnasium, a 25-metre swimming pool, treatment rooms, wet room and gym classes.

Additionally, the development will include 48,000 sq. ft. of shops, restaurants and bars, and a direct entrance to London Waterloo Station.



These particulars, whilst believed to be accurate are set out as a general outline only for guidance and do not constitute any part of an offer or contract. Intending purchasers should not rely on them as statements of representation of fact, but must satisfy themselves by inspection or otherwise as to their accuracy. No person in this firm's employment has the authority to make or give any representation or warranty in respect of the property.