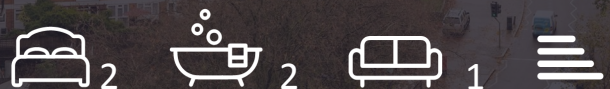


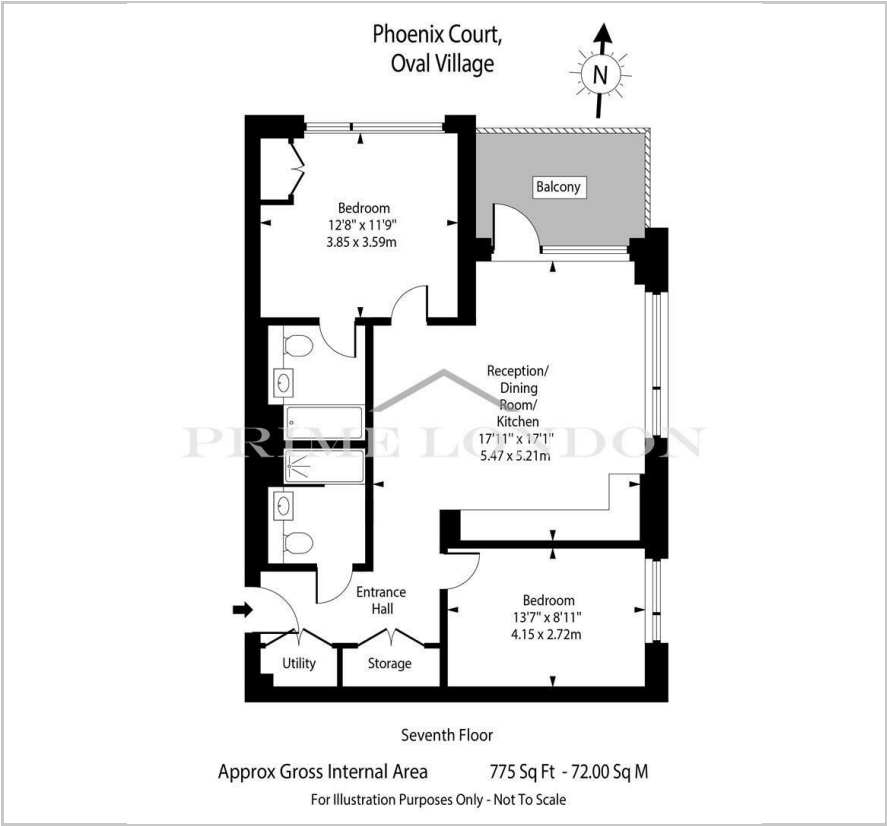
## Phoenix Court

Oval Village, 7 Gasholder Place, SE11 5AU

£775 Per Week



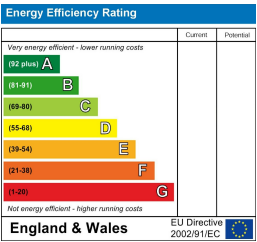
Floor Plan



Area Map



Energy Efficiency Graph



Viewing

By appointment. Contact us on 0207 928 6663 if you wish to arrange a viewing appointment for this property, or require further information.

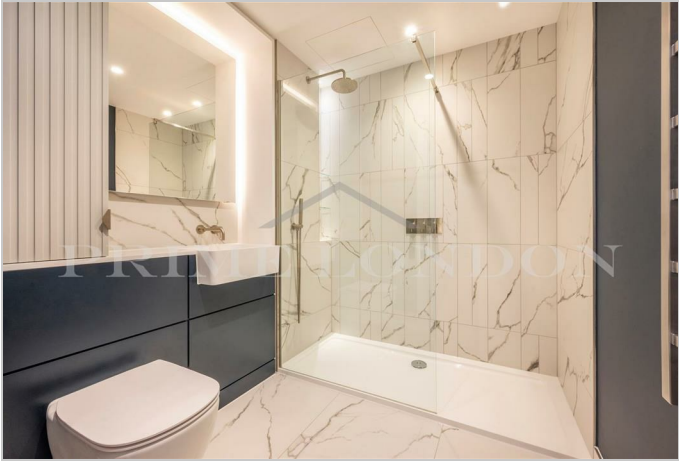
- Brand New Apartment
- Two bedrooms, Two Bathrooms
- 779 sq ft / 72 sq m
- Furnished
- Private balcony with sweeping views across the London
- 24 hour concierge service, gym, swimming pool and spa
- Private Garden Spaces
- Cinema and meetings rooms

Available 4th September.

Prime London are delighted to present this exquisite, newly built two-bedroom apartment located on a high floor in the highly anticipated Oval Village. This apartment exemplifies modern living, featuring a spacious open-plan reception area seamlessly connected to a fully-equipped kitchen. Step out onto the generous balcony to enjoy expansive views of London, including iconic landmarks such as Big Ben, the Shard, amongst many others.

This property offers a luxurious yet cosmopolitan lifestyle, with an open-plan living area, well-appointed bathrooms, and bright, airy bedrooms. Both bedrooms offer generous dimensions, with the master bedroom boasting the added advantage of built-in closets and an en-suite bathroom. Additionally, there is a second family bathroom available, along with plenty of storage space throughout the apartment. The interiors exude refinement and minimalism, delivering a modern and elegant aesthetic. The bedrooms have been meticulously designed as tranquil retreats, with soothing colour palettes and elegant features that create a perfect environment for relaxation and rejuvenation, allowing you to reconnect with your inner peace and vitality.

In addition to its luxurious interiors, this location boasts excellent transportation connections via the Northern and Victoria lines, ensuring a swift and convenient commute to London's prime destinations, including Soho, Covent Garden, and Nine Elms. Choosing this property means embracing a lifestyle that seamlessly blends



These particulars, whilst believed to be accurate are set out as a general outline only for guidance and do not constitute any part of an offer or contract. Intending purchasers should not rely on them as statements of representation of fact, but must satisfy themselves by inspection or otherwise as to their accuracy. No person in this firm's employment has the authority to make or give any representation or warranty in respect of the property.