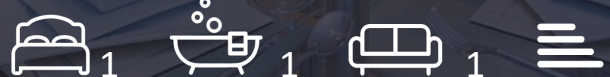


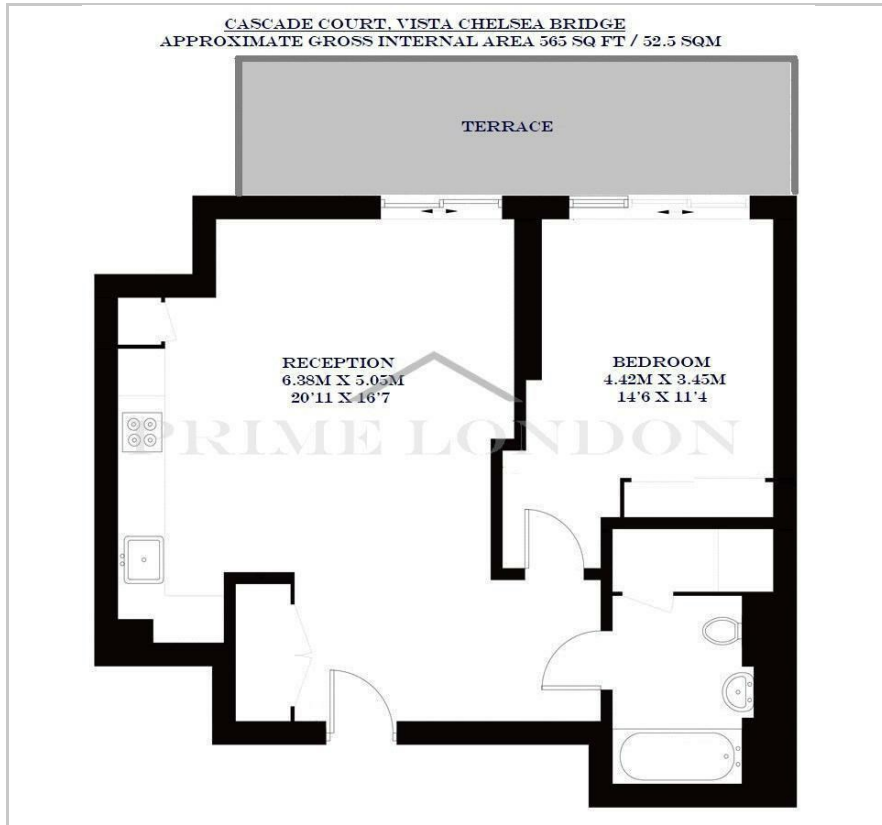
Cascade Court

1 Sopwith Way, Vista Chelsea Bridge, SW11 8AZ

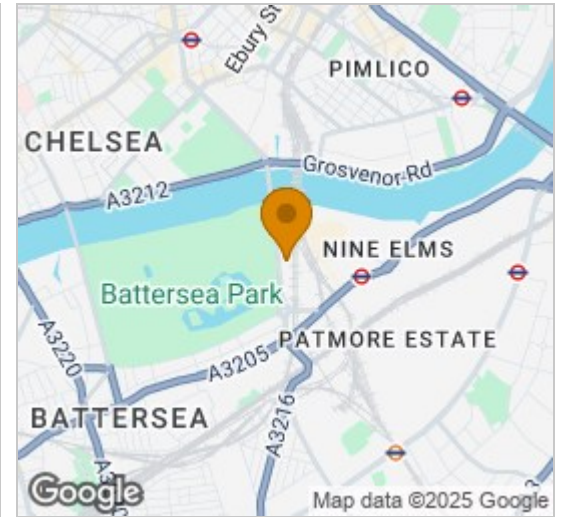
£760 Per Week



Floor Plan



Area Map



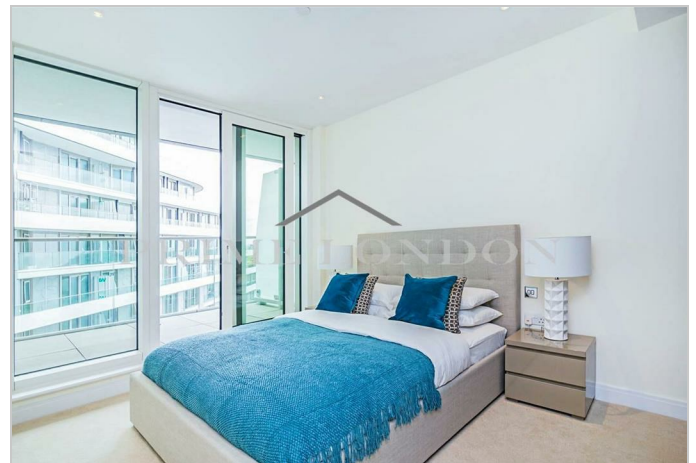
Energy Efficiency Graph



Viewing

By appointment. Contact us on 0207 928 6663 if you wish to arrange a viewing appointment for this property, or require further information.

- Interior designed one bedroom
- Innovative and striking architecture
- Views onto Battersea Park
- Residents' leisure facilities and a 24 concierge service
- 24 hour concierge



This interior designed, high floor one bedroom apartment offers a terrace with views onto Battersea Park and internal space totalling 565 sq ft (52.5 sqm), and is available for lease through Prime London.

Cascade Court at Vista Chelsea Bridge is the first phase in this contemporary development (with residents' leisure facilities and a 24 concierge service) overlooking Battersea Park, offering bright apartments with magnificent large windows and superb finishes, quality engineered timber flooring, kitchens with subtle satin finishes and beautiful stone work surfaces, high specification bathrooms and bedrooms with a fusion of subtle lighting, muted tones and soft carpeting.

The innovative and striking architecture has been conceived by world-leading architects Scott Brownrigg, to incorporate extensive outdoor landscaping and feature terraces whilst fitting into the beautiful surroundings of Battersea Park.



These particulars, whilst believed to be accurate are set out as a general outline only for guidance and do not constitute any part of an offer or contract. Intending purchasers should not rely on them as statements of representation of fact, but must satisfy themselves by inspection or otherwise as to their accuracy. No person in this firm's employment has the authority to make or give any representation or warranty in respect of the property.