



## Temple House

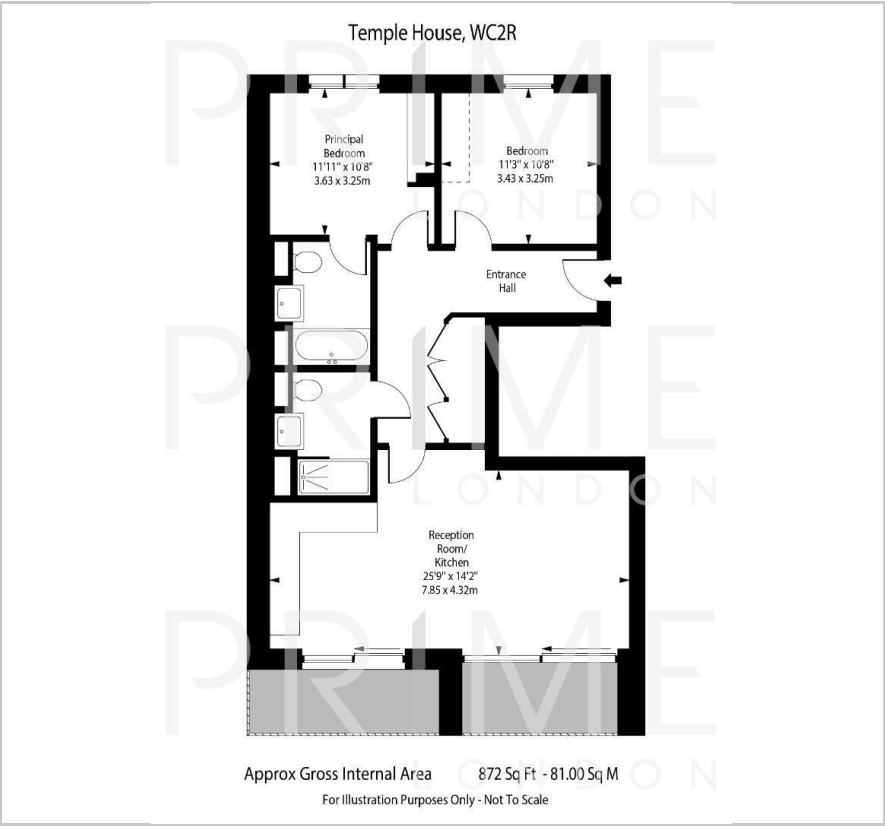
190 Strand, Covent Garden, WC2R 3DX

£1,400 Per Week





Floor Plan



Area Map



Energy Efficiency Graph



Viewing

By appointment. Contact us on 0207 052 1075 if you wish to arrange a viewing appointment for this property, or require further information.

- Premium two bedroom ■ 872 sq ft / 81 sq m apartment
- Fully furnished ■ Two private balconies with quiet view
- State of the art gym and ■ 24 hour concierge service swimming pool/spa



This exceptional two bedroom two bathroom apartment of 872 sq ft (81 sqm), situated on the quiet west facing side of the luxurious 190 Strand development, close to the banks of the River Thames and Covent Garden, is available for lease through Prime London.

This fully furnished property is finished to the highest specification. The property comprises a spacious entrance hall with ample storage, a large open-plan reception room with two private balconies, dining area, and a smart kitchen with Miele integrated appliances.

There are a further two substantial double bedrooms, and one with its own luxury bathroom suite, the other benefits from a separate family bathroom. The property also features comfort cooling, underfloor heating, and solid parquet wood flooring.

190 Strand benefits from a five-star 24 hour concierge service, resident's private cinema, state of the art gym and swimming pool/spa.

These particulars, whilst believed to be accurate are set out as a general outline only for guidance and do not constitute any part of an offer or contract. Intending purchasers should not rely on them as statements of representation of fact, but must satisfy themselves by inspection or otherwise as to their accuracy. No person in this firm's employment has the authority to make or give any representation or warranty in respect of the property.