



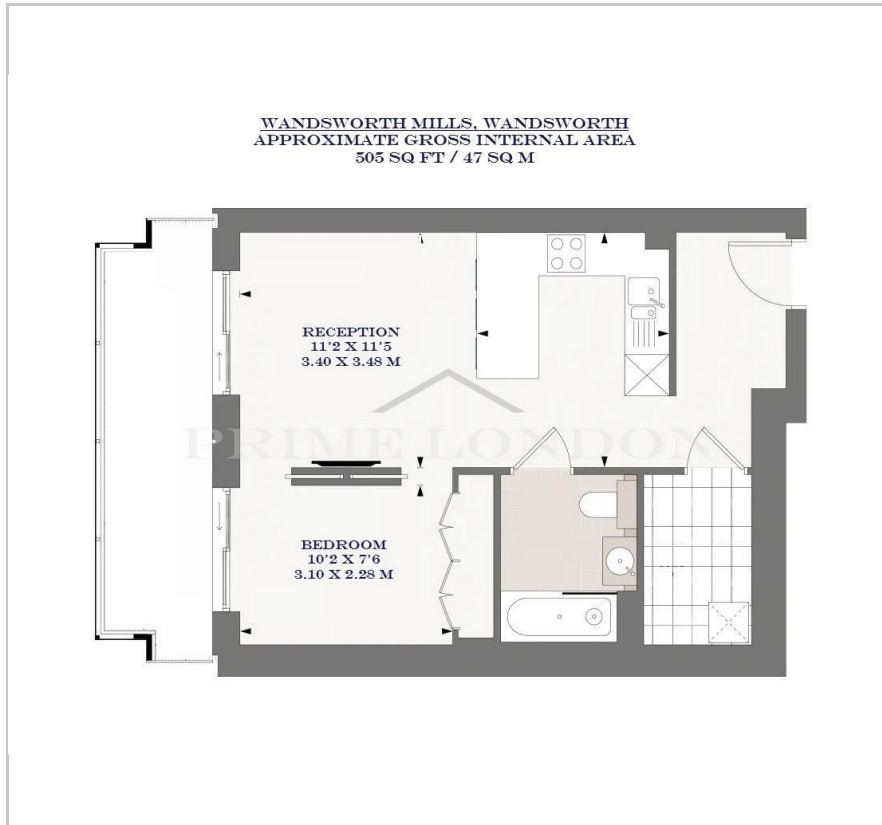
Wandsworth Mills

Wandsworth Town, London, SW18 1UB

Asking Price £525,000



Floor Plan



Area Map



Energy Efficiency Graph



Viewing

By appointment. Contact us on 0207 052 1075 if you wish to arrange a viewing appointment for this property, or require further information.

- Manhattan, 1, 2 and 3 bedroom apartments
- Over 15,000 sq ft of exclusive residents' facilities
- South West village living on your doorstep
- Only 13 minutes to Waterloo from Wandsworth Town
- Access to 1,700 acres of green spaces within 2 miles
- 24 hour concierge

Wandsworth Mills, a new development by St George has just launched in the heart of Wandsworth, offering a selection of Manhattan, 1,2 and 3 bedroom apartments starting from £525,000.

Wandsworth Mills offers a perfect blend of heritage and modernity, featuring high-specification new homes with thoughtfully designed landscaping, alongside Grade II listed buildings and beautifully appointed facilities for residents.

With wellness at the core of this development, Wandsworth Mills offers over 15,000 sq ft of exclusive residents' facilities. This includes an indoor 'Aqua Sanctuary', thermal spa, a fully equipped gym and screening room.

Residents of Wandsworth Mills also benefit from a 24 hour concierge.

Situated in one of London's greenest boroughs, close to both the Thames and the Wandle rivers, Wandsworth Mills promises to be a desirable place to live. For transport, Wandsworth Town rail station is just a short walk away, providing access to Waterloo in just 13 minutes.



These particulars, whilst believed to be accurate are set out as a general outline only for guidance and do not constitute any part of an offer or contract. Intending purchasers should not rely on them as statements of representation of fact, but must satisfy themselves by inspection or otherwise as to their accuracy. No person in this firm's employment has the authority to make or give any representation or warranty in respect of the property.