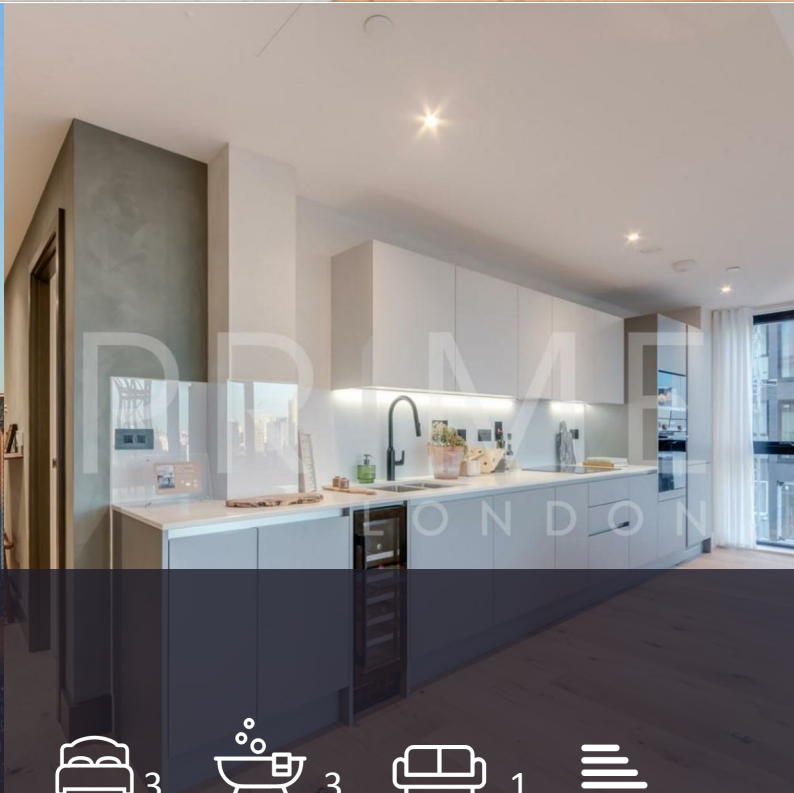




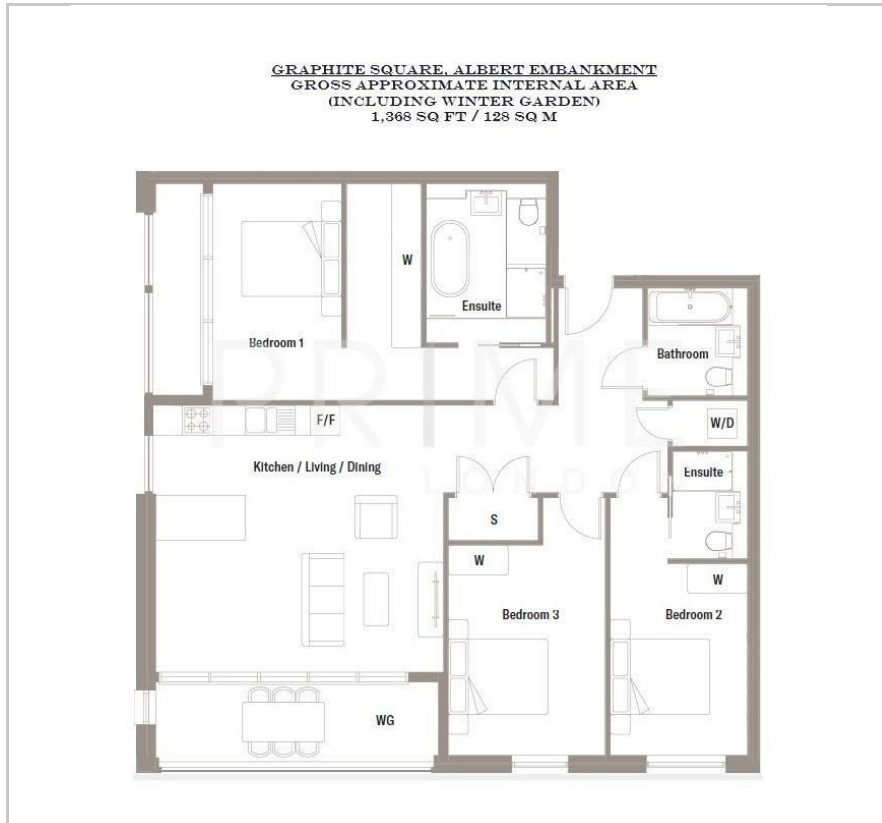
Vauxhall Walk

Albert Embankment, SE11 5EE

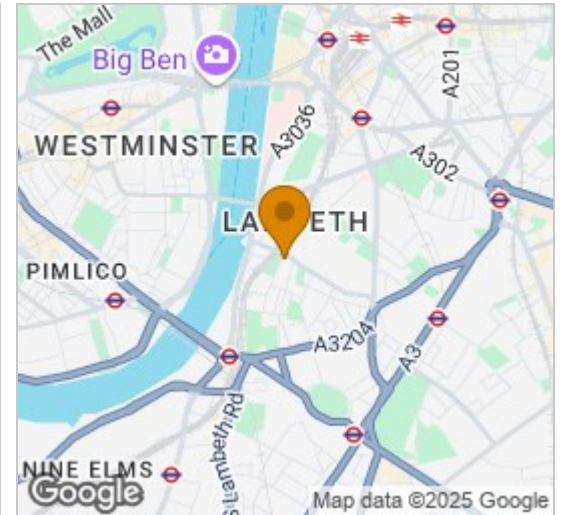
Asking Price £1,625,000



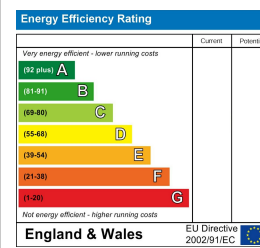
Floor Plan



Area Map



Energy Efficiency Graph



Viewing

By appointment. Contact us on 0207 928 6663 if you wish to arrange a viewing appointment for this property, or require further information.

- Off-plan sale completing February 2025
- Loft inspired living space
- 80,000 sq ft of on site shops
- 9,000 sq ft residents' podium and amenities garden
- Vauxhall Station (0.2 miles)
- 24 hour concierge

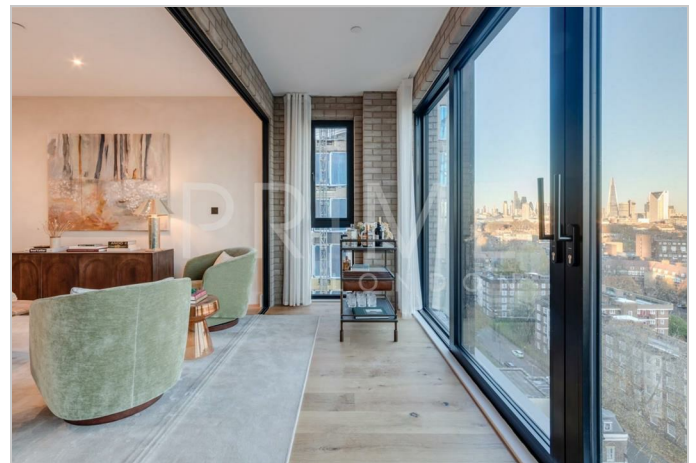
Images are of a smaller style unit, and are intended to show example finishes only This new loft-inspired three-bedroom three-bathroom apartment, set on a high floor in the beautifully designed new Zone 1 residence on Vauxhall Walk, is available for reassignment sale through Prime London.

This exciting new mixed-use development in central London, near the Nine Elms Regeneration area and the River Thames, features industrial/loft-style homes with bright, open-plan living spaces and floor-to-ceiling doors leading to balconies with stunning London skyline views. The building's main elements—brick, steel, glass, and plants—reflect the Industrial Revolution and resonate strongly in Vauxhall.

Historically a hub for outdoor entertainment, the development now boasts grand entrance lobbies with ceiling sculptures and high-end interiors. Residents enjoy a 24-hour concierge, landscaped gardens and nearby green spaces like Vauxhall Park, which offers a playground, tennis court, and model houses, as well as Vauxhall City Farm with its diverse animal collection and ecology garden.

The development is just an 8-minute walk from Vauxhall Station (Victoria Line) in London transport Zone 1.

*View photos from development and indoor images are intended to show example finishes only



These particulars, whilst believed to be accurate are set out as a general outline only for guidance and do not constitute any part of an offer or contract. Intending purchasers should not rely on them as statements of representation of fact, but must satisfy themselves by inspection or otherwise as to their accuracy. No person in this firm's employment has the authority to make or give any representation or warranty in respect of the property.