



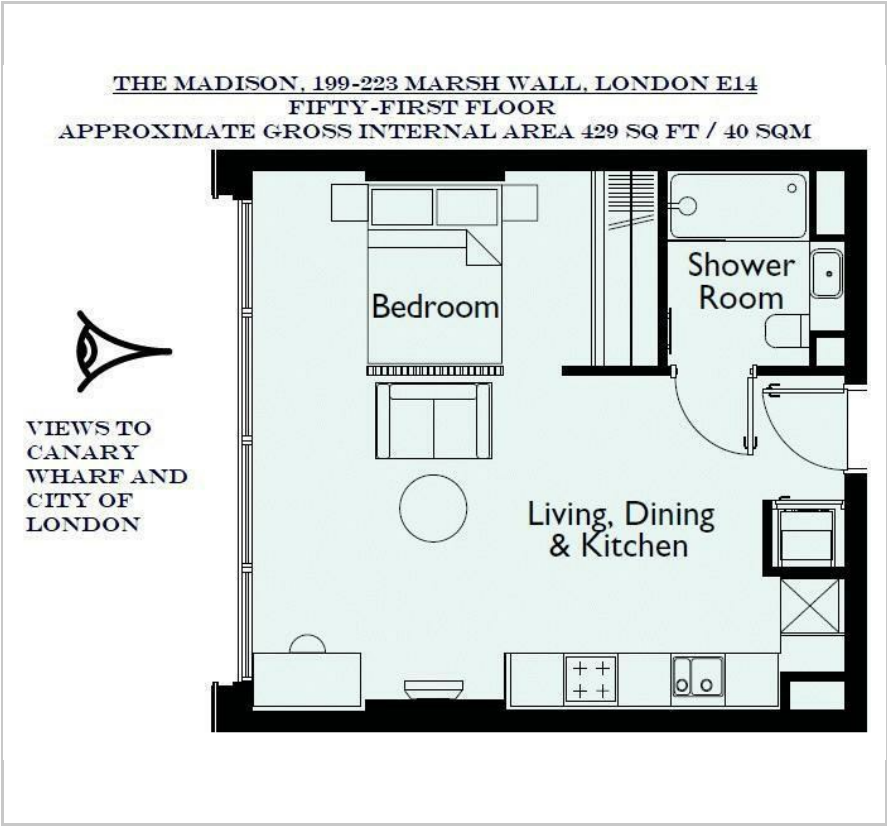
## Amory Tower

199 Marsh Wall, Canary Wharf, E14 9TW

£550 Per Week



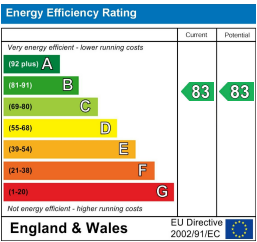
Floor Plan



Area Map



Energy Efficiency Graph



Viewing

By appointment. Contact us on 0207 928 6663 if you wish to arrange a viewing appointment for this property, or require further information.

- 51st Floor Studio
- Full width floor-to-ceiling windows
- 24 hour Concierge
- Furnished
- Business lounge
- Residents' Gymnasium, Swimming Pool and Private Screening Room



The highest studio apartment in London? We believe so, and this fifty-first floor property offers the best possible view over London from its full width floor-to-ceiling windows.

With 2.6 metre ceiling heights and generous internal space, the design and layout of these superb apartments has been meticulously planned to ensure maximum daylight while taking advantage of the panoramic views.

Amenities on site include a Business lounge, 24 hour Concierge, Residents' Gymnasium, Swimming Pool and Private Screening Room.

Amory Tower is conveniently located minutes from Canary Wharf, one of the capital's newest and most exciting living and working environments. The location is ideal, Canary Wharf is easily accessible by rail, road, and river and underground. With Jubilee Line links straight to the West End, and Docklands Light Railway providing direct access to the City, Canary Wharf remains one of the most connected areas of London. The new Elizabeth Line, further improves transport connections across the city. All of London's five airports are within easy reach, making international travel easy and straightforward.

These particulars, whilst believed to be accurate are set out as a general outline only for guidance and do not constitute any part of an offer or contract. Intending purchasers should not rely on them as statements of representation of fact, but must satisfy themselves by inspection or otherwise as to their accuracy. No person in this firm's employment has the authority to make or give any representation or warranty in respect of the property.