



Hyde Park Gardens

London, W2 2LT

£12,950,000



4



5



2



Floor Plan



Area Map



Energy Efficiency Graph



Viewing

By appointment. Contact us on 0207 052 1075 if you wish to arrange a viewing appointment for this property, or require further information.

- Share of Freehold
- Media room
- Four Bedrooms
- Spa area and gym
- Double reception room
- Kitchen / Breakfast room
- Study

An exceptional and immaculately presented triplex penthouse set within a Grade II listed corner stuccoed building, offering excellent entertaining space with lateral living.

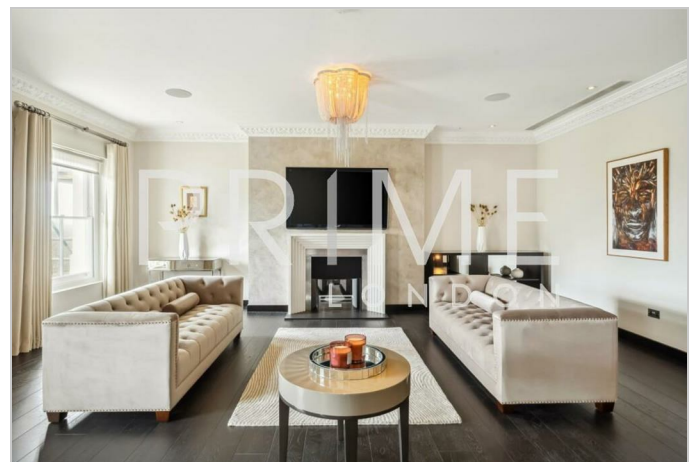
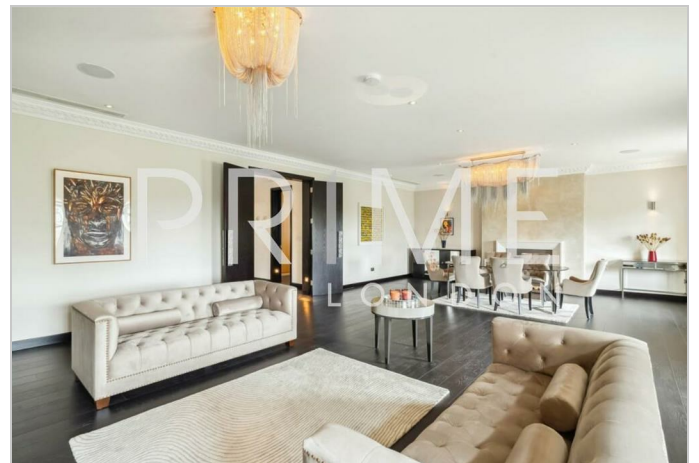
A very rare and immaculately presented triplex penthouse apartment set in a grand Grade II listed stucco fronted building, with excellent entertaining and living space throughout the property.

The impressive reception room, measuring over 10m wide x near 7m deep, includes space for formal dining and has three windows facing south over the private communal gardens towards Hyde Park. The room is flooded with natural light and offers beautiful period features including a fire place, high ceilings, and impressive cornice detailing.

There is a dedicated media room, a fantastic fully equipped kitchen with a large central island and breakfast bar, plus a spacious in-kitchen dining area.

The principal bedroom suite is also wonderfully spacious with panoramic views of Hyde Park, and boasts two beautifully appointed marble en suite bathrooms with double walk-in shower and separate bathtub. There are three further large double bedrooms, all of which benefit from their own en suite bathrooms.

Furthermore, there is a separate gym area and on the top floor there is a cozy study and spa area to enjoy



These particulars, whilst believed to be accurate are set out as a general outline only for guidance and do not constitute any part of an offer or contract. Intending purchasers should not rely on them as statements of representation of fact, but must satisfy themselves by inspection or otherwise as to their accuracy. No person in this firm's employment has the authority to make or give any representation or warranty in respect of the property.