



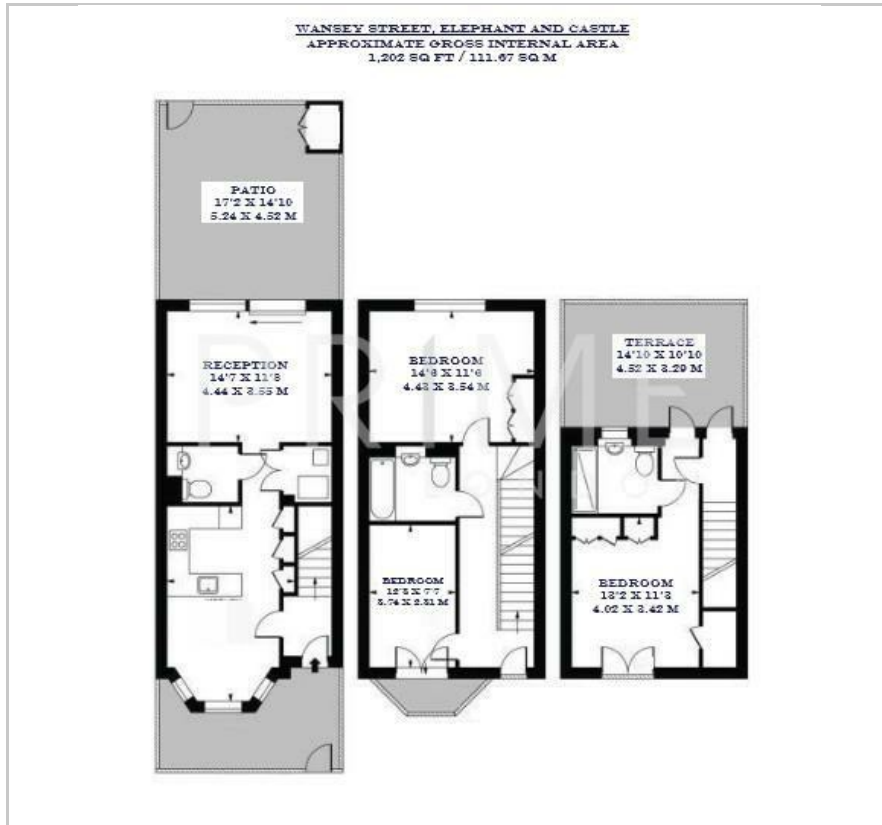
Wansey Street

Elephant and Castle, London, SE17 1FF

Price Guide £1,000,000



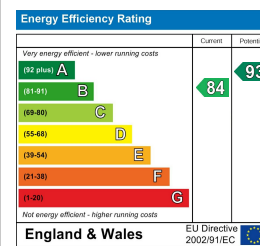
Floor Plan



Area Map



Energy Efficiency Graph



Viewing

By appointment. Contact us on 0207 928 6663 if you wish to arrange a viewing appointment for this property, or require further information.

- Three bedroom townhouse
- Private patio and second floor terrace
- Just 0.4 miles to Elephant & Castle underground station
- New built
- 1,202 sq ft (111.67 sqm)
- Resident's lounge, communal gardens and roof terrace
- Includes a car park
- 24 hour concierge

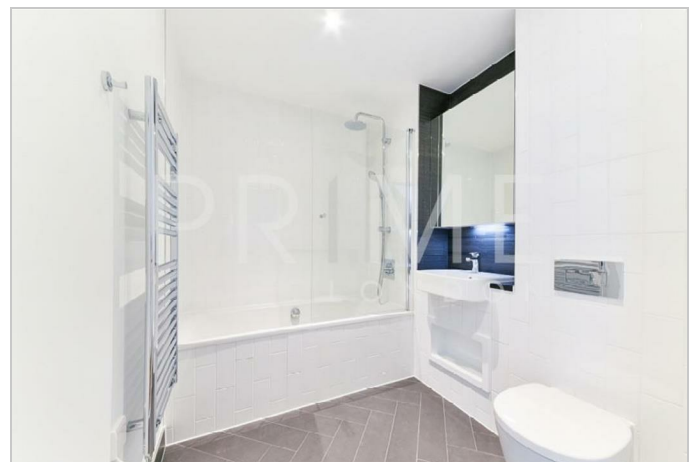
This spectacular three bedroom townhouse, located in the heart of Elephant and Castle, is available for chain free sale through Prime London.

Spanning over three floors and totalling 1,202 sq ft (111.67 sqm), this property features a fully integrated kitchen with space for dining, a separate living room leading to the spacious patio. The property also comes with parking.

Additionally, two double bedrooms on the first floor and a family bathroom, and the master bedroom, with an en-suite bathroom and access to the private terrace, covering the second floor.

Residents of this development benefit from a 24 hour concierge, resident's lounge, a roof terrace and communal gardens.

For transportation, Elephant and Castle underground and railway station is just a short walk away, servicing the Northern and Bakerloo lines, and National Rail services.



These particulars, whilst believed to be accurate are set out as a general outline only for guidance and do not constitute any part of an offer or contract. Intending purchasers should not rely on them as statements of representation of fact, but must satisfy themselves by inspection or otherwise as to their accuracy. No person in this firm's employment has the authority to make or give any representation or warranty in respect of the property.