



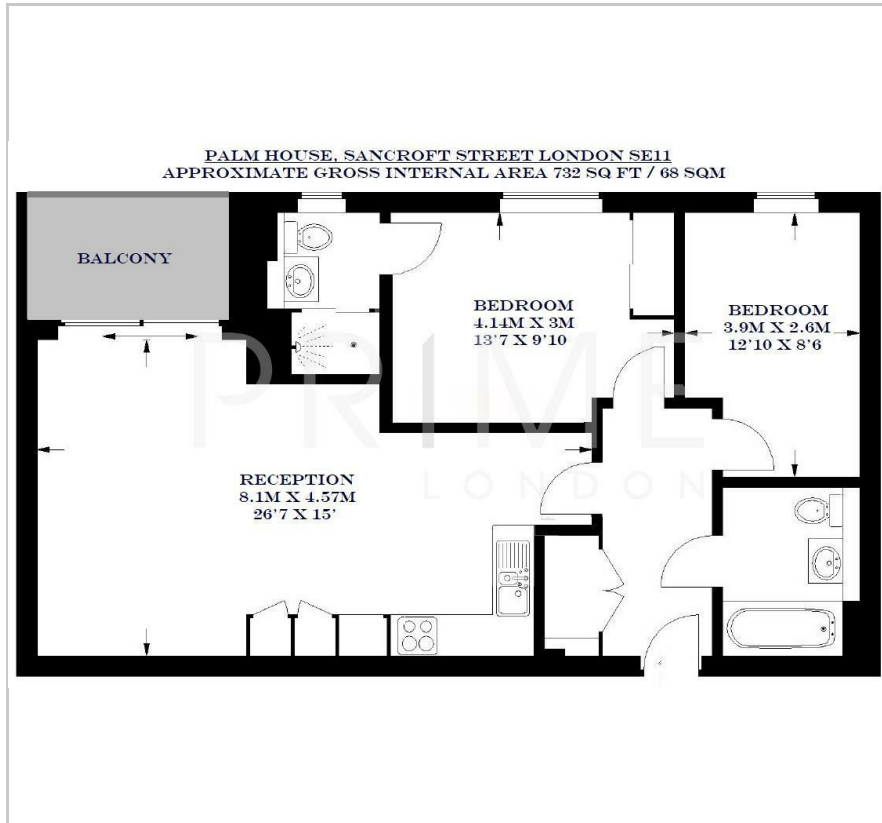
Palm House

70 Sancroft Street, Vauxhall, SE11 5AH

£625 Per Week



Floor Plan



Area Map



Energy Efficiency Graph



Viewing

By appointment. Contact us on 0207 928 6663 if you wish to arrange a viewing appointment for this property, or require further information.

- 732 sq ft (68 sqm)
- Large Entertaining area
- Sizeable reception with balcony
- Conservation area
- Close to Vauxhall & Kennington tube stations
- Lift within the building

A sizeable and well proportioned two bedroom apartment of 732 sq ft (68 sqm), with extremely large entertaining area, available on a furnished basis exclusively through Prime London.

The property offers a generous reception with open plan kitchen and balcony access, two double bedrooms (master with en suite) separate family bathroom and modern fixtures and fittings throughout.

Palm House offers great value within a conservation area a few minutes from The Houses of Parliament and Big Ben, and within ten minutes walk of both Vauxhall and Kennington tube stations, enabling exceptional connections to the Capital's entire tube and rail network.



These particulars, whilst believed to be accurate are set out as a general outline only for guidance and do not constitute any part of an offer or contract. Intending purchasers should not rely on them as statements of representation of fact, but must satisfy themselves by inspection or otherwise as to their accuracy. No person in this firm's employment has the authority to make or give any representation or warranty in respect of the property.