



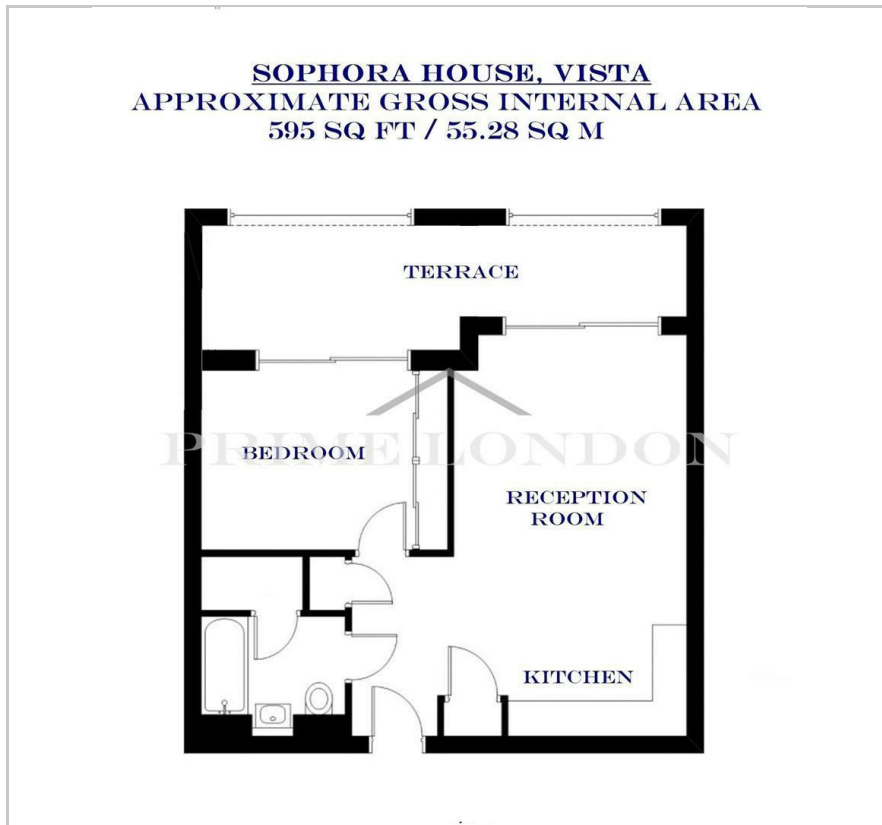
Sophora House

342 Queenstown Road, Vista Chelsea Bridge Wharf, SW11 8BW

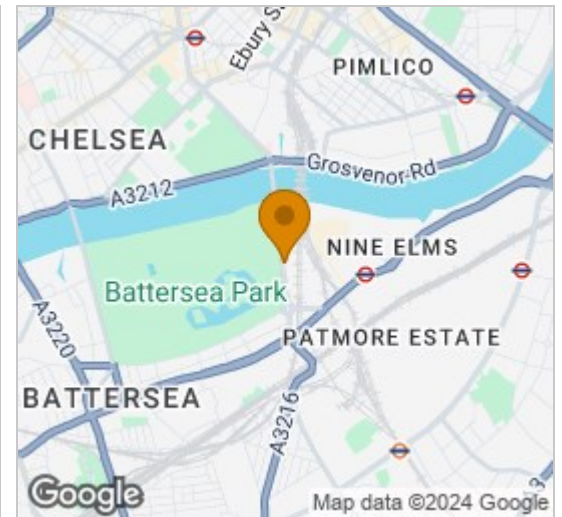
£725 Per Week



Floor Plan



Area Map



Energy Efficiency Graph



Viewing

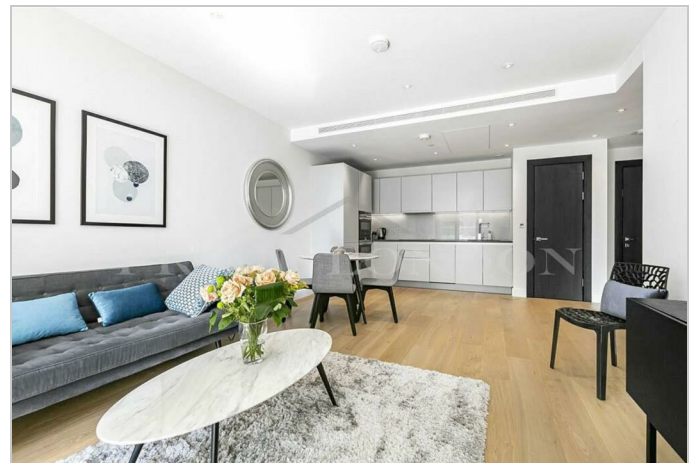
By appointment. Contact us on 0207 928 6663 if you wish to arrange a viewing appointment for this property, or require further information.

- Modern one bedroom ▪ Private balcony apartment
- Fully furnished
- Innovative and striking architecture
- Leisure Facilities - Indoor Hydro Pool, Gym and Sauna
- 24 concierge

This modern and well designed one bedroom apartment, with large private balcony facing the iconic Battersea Power Station, comes fully furnished and is available to rent through Prime London.

Sophora House is the second phase in this contemporary development (with resident's leisure facilities and 24 concierge) overlooking Battersea Park, offering bright apartments with magnificent large windows and superb finishes, quality engineered timber flooring, kitchens with subtle satin finishes and beautiful stone work surfaces, high specification bathrooms and bedrooms with a fusion of subtle lighting, muted tones and soft carpeting.

The innovative and striking architecture has been conceived by world-leading architects Scott Brownrigg, to incorporate extensive outdoor landscaping and feature terraces whilst fitting into the beautiful surroundings of Battersea Park.



These particulars, whilst believed to be accurate are set out as a general outline only for guidance and do not constitute any part of an offer or contract. Intending purchasers should not rely on them as statements of representation of fact, but must satisfy themselves by inspection or otherwise as to their accuracy. No person in this firm's employment has the authority to make or give any representation or warranty in respect of the property.