



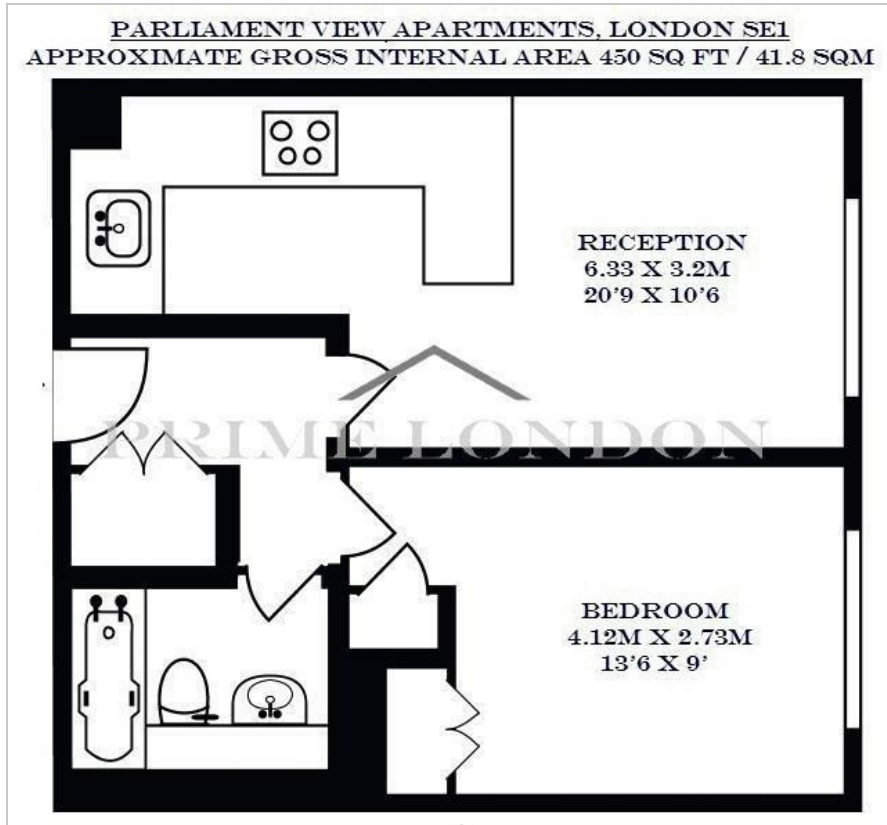
Parliament View Apartments

1 Albert Embankment, SE1 7XQ

£540 Per Week



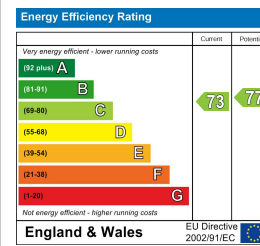
Floor Plan



Area Map



Energy Efficiency Graph



Viewing

By appointment. Contact us on 0207 928 6663 if you wish to arrange a viewing appointment for this property, or require further information.

- 5th floor
- Light south-facing reception
- Excellent location
- 450 sq ft (41.8 sqm)
- Residents' gymnasium
- 24 hour concierge

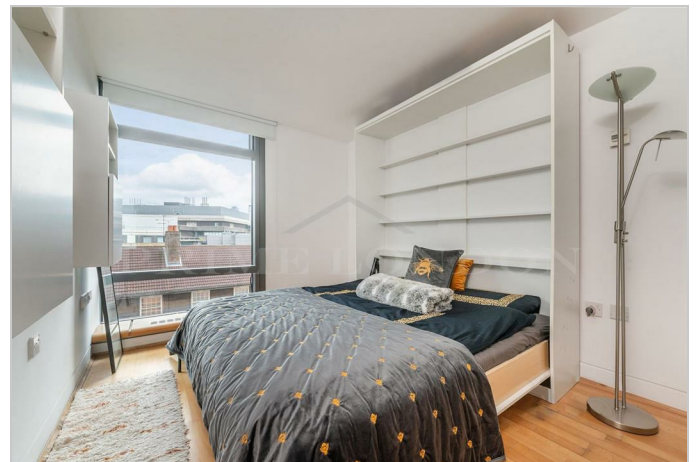


A modern and bright one bedroom apartment with floor to ceiling windows and a south-facing reception, secluded position and excellent specifications, is available for lease exclusively through Prime London.

The property also includes an open-plan kitchen with granite topped work surface and Bosch integrated appliances, Philippe Starck bathroom and hardwood flooring.

Parliament View itself offers a 24 hour concierge service, resident's gymnasium and an excellent location on the river between Lambeth and Vauxhall Bridge.

As a result the development is within easy reach of the West End, Westminster, the City and South Bank. Vauxhall rail and underground station..



These particulars, whilst believed to be accurate are set out as a general outline only for guidance and do not constitute any part of an offer or contract. Intending purchasers should not rely on them as statements of representation of fact, but must satisfy themselves by inspection or otherwise as to their accuracy. No person in this firm's employment has the authority to make or give any representation or warranty in respect of the property.