



Dolben Court

Montaigne Close, Westminster, SW1P 4BB

Asking Price £600,000



1



1

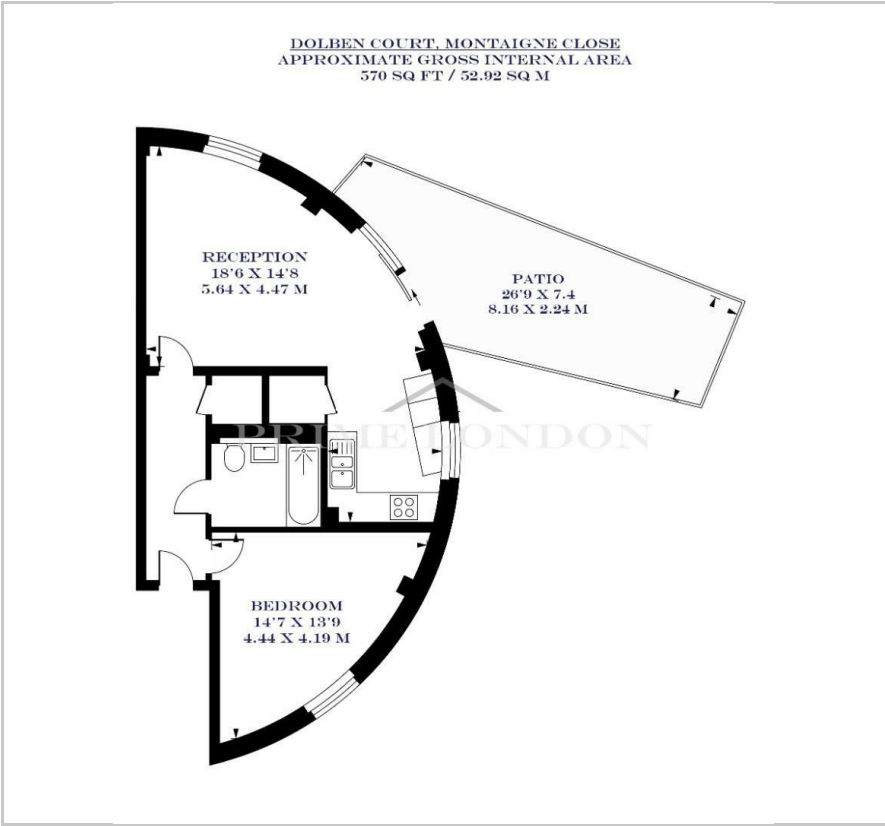


1



D

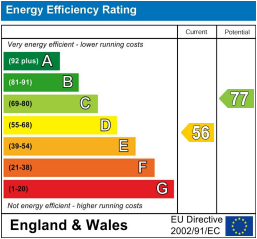
Floor Plan



Area Map



Energy Efficiency Graph



Viewing

By appointment. Contact us on 0207 052 1075 if you wish to arrange a viewing appointment for this property, or require further information.

- One bedroom apartment
- 570 sq ft (52.92 sqm)
- Spacious decked patio area
- Resident's on-site gym
- Close proximity to Pimlico
- 24 hour concierge Station



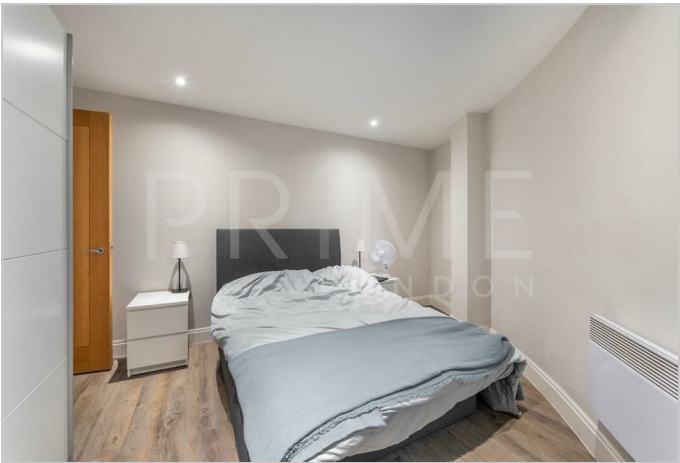
This bright and modern one bedroom apartment, situated within Dolben Court on Montaigne Close, is available for chain free sale through Prime London.

Totalling 570 sq ft (52.92 sqm), this unique apartment, located in an exclusive gated development, offers an open-plan reception room/kitchen, an ultra-modern bathroom, and a spacious decked patio area, perfect for hosting.

Residents of Dolben Court enjoy on-site facilities, including a concierge and gym.

Dolben Court is situated in the heart of Westminister, to the south of St James's Park and Victoria, and to the north of Pimlico. The property is within reach of the numerous amenities, restaurants, and shops of Victoria, Westminister, and St James. Local parklands, including Green Park and St James's Park, are easily accessible.

Transport links are convenient, with the Victoria Line (Pimlico) approximately 0.2 miles away.



These particulars, whilst believed to be accurate are set out as a general outline only for guidance and do not constitute any part of an offer or contract. Intending purchasers should not rely on them as statements of representation of fact, but must satisfy themselves by inspection or otherwise as to their accuracy. No person in this firms employment has the authority to make or give any representation or warranty in respect of the property.