

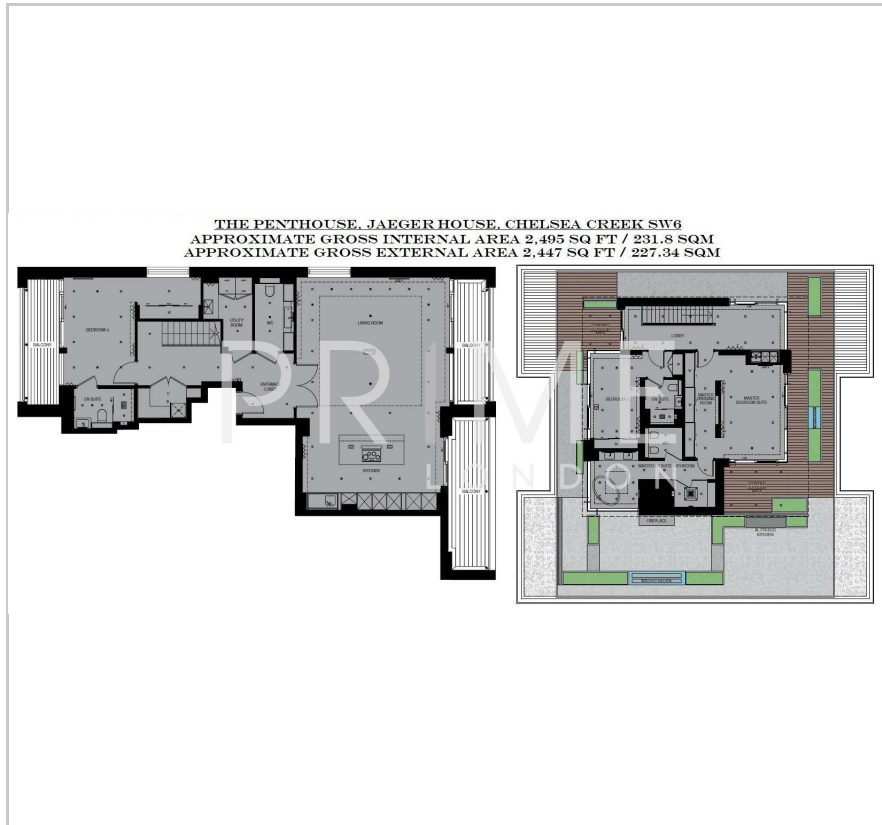
The Penthouse

Jaeger House, Chelsea Creek, SW6 2GF

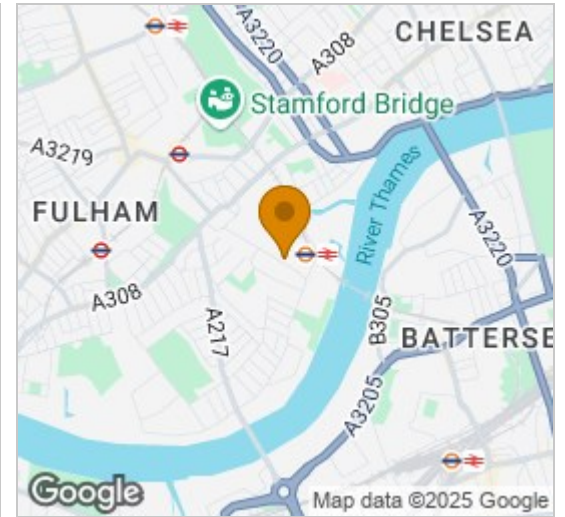
Asking Price £4,850,000



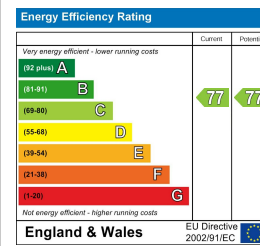
Floor Plan



Area Map



Energy Efficiency Graph



Viewing

By appointment. Contact us on 0207 052 1075 if you wish to arrange a viewing appointment for this property, or require further information.

- Duplex penthouse apartment, ▪ Incredible interiors and sizeable entertaining space externally
- Divided into a series of different outdoor zones ▪ Extremely rare opportunity to acquire such a sizeable apartment
- Accessed through a security controlled lift ▪ Located adjacent to Chelsea Harbour, moments from the river Thames

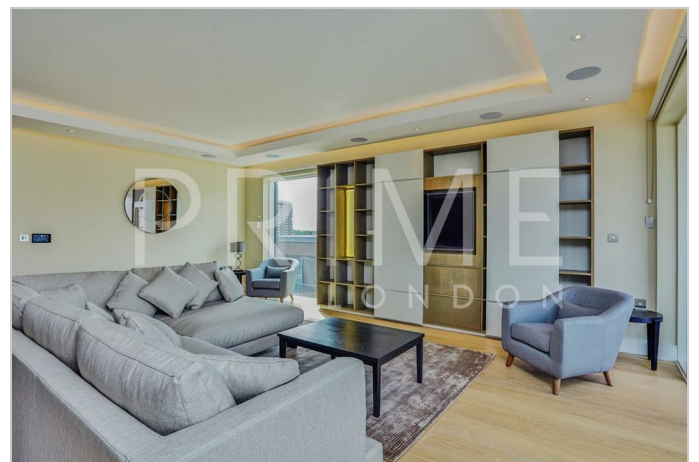


This stunning duplex penthouse apartment spans nearly 5,000 sq ft and offers exceptional interiors along with expansive outdoor entertaining areas. The apartment is thoughtfully divided into a series of outdoor zones, including an al fresco kitchen, dining, and relaxation space, as well as two covered outdoor areas.

Located in the sought-after Chelsea Creek development, this property presents a rare opportunity to acquire such a large and luxurious apartment. Accessed via a secure, controlled lift, the apartment seamlessly blends internal and external spaces, creating a relaxed, open atmosphere within this prestigious development.

Chelsea Creek, adjacent to Chelsea Harbour and just moments from the River Thames, is one of London's most exclusive dockside communities. Set amidst tree-lined avenues, scenic waterways, and beautifully landscaped communal gardens, it offers an unparalleled living experience.

The development is conveniently located near Imperial Wharf Station, offering excellent transport links, while numerous local bus services provide easy access to Chelsea, Fulham, and beyond. The Thames Clipper Service also operates from the nearby Chelsea Harbour pier..



These particulars, whilst believed to be accurate are set out as a general outline only for guidance and do not constitute any part of an offer or contract. Intending purchasers should not rely on them as statements of representation of fact, but must satisfy themselves by inspection or otherwise as to their accuracy. No person in this firm's employment has the authority to make or give any representation or warranty in respect of the property.