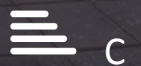
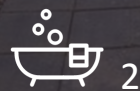


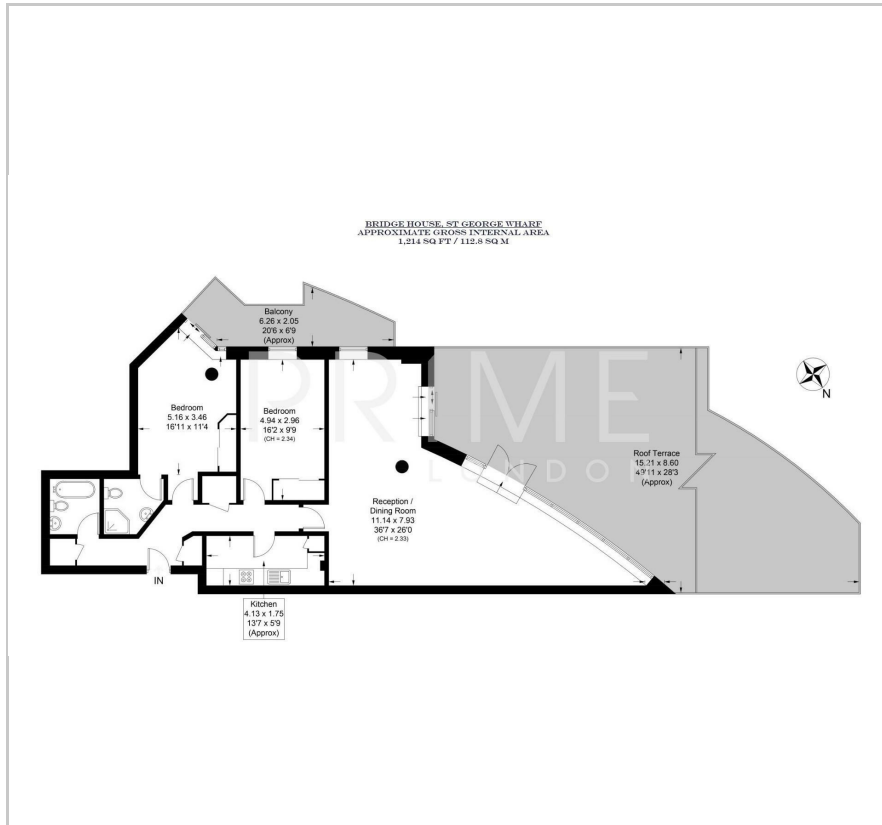
Bridge House

St George Wharf, SW8 2LQ

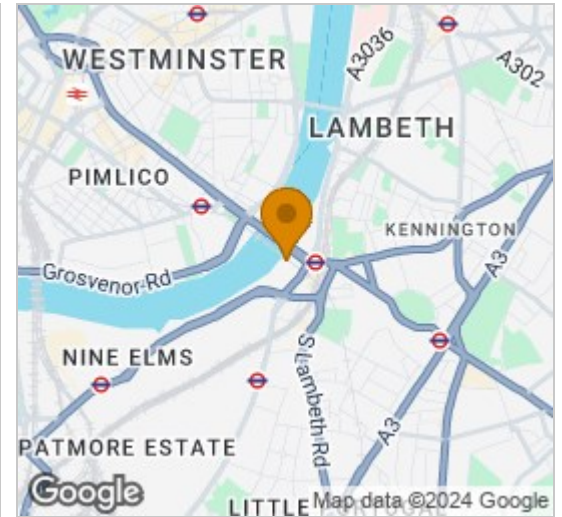
Best Offers Over £1,250,000



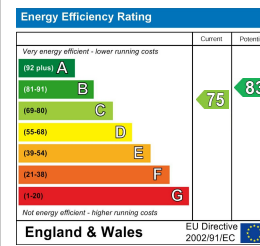
Floor Plan



Area Map



Energy Efficiency Graph



Viewing

By appointment. Contact us on 0207 928 6663 if you wish to arrange a viewing appointment for this property, or require further information.

- Fantastic views of the River Thames ■ 1,214 sq ft / 112.8 sq m (internal space)
- Incredible entertaining space ■ Huge private terrace and separate balcony
- Chain free and EWS1 ■ 24 hour concierge compliant

Set on a high floor, with one of the largest waterfront terraces in the city (as well as a second separate balcony) - offering fantastic views up and down the River Thames, this spacious two bedroom two bathroom apartment is available for chain free sale through Prime London.

Comprising a large curved reception with access to the enormous terrace overlooking the River Thames with views of the Houses of Parliament, London Eye and Battersea Power Station, a separate fully fitted and modern kitchen, two spacious double bedrooms, two modern bathrooms (one of which are en suite), and a further balcony coming off one of the bedrooms. The property offers an excellent position and aspect within the sought after riverside development, St. George Wharf.

St George Wharf benefits from the fantastic transport links afforded by this very well kept complex by The River Thames. The development offers on site riverside bars and restaurants such as Waterfront London, The Riverside, Four Degree and Pop Art Sushi as well as direct access to Vauxhall Underground Station on the Victoria Line and the New Nine Elms Underground on the Northern Line.



These particulars, whilst believed to be accurate are set out as a general outline only for guidance and do not constitute any part of an offer or contract. Intending purchasers should not rely on them as statements of representation of fact, but must satisfy themselves by inspection or otherwise as to their accuracy. No person in this firm's employment has the authority to make or give any representation or warranty in respect of the property.