

Bramah House

9 Gatliff Road, Grosvenor Waterside, SW1W 8DQ

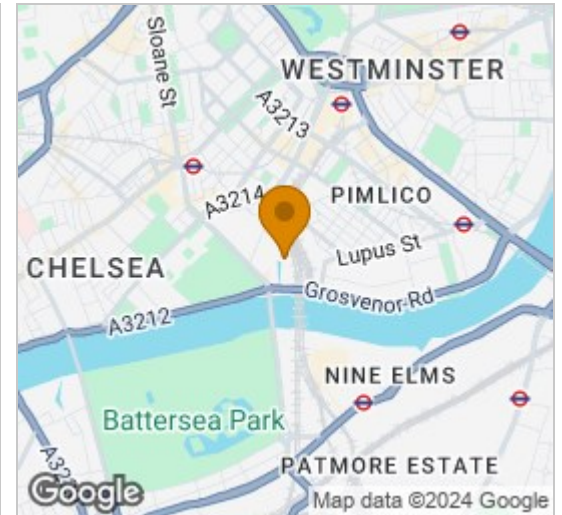
£585 Per Week



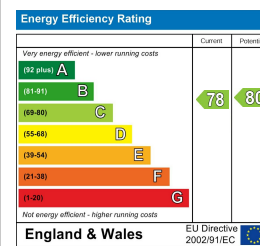
Floor Plan



Area Map



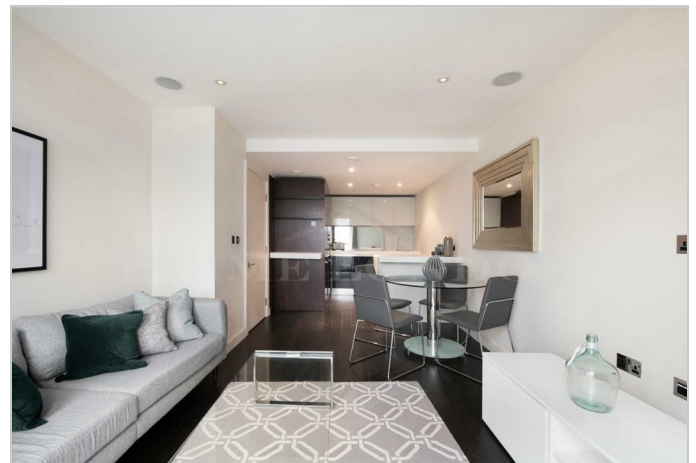
Energy Efficiency Graph



Viewing

By appointment. Contact us on 0207 052 1075 if you wish to arrange a viewing appointment for this property, or require further information.

- One-bedroom apartment ▪ 508 sq ft (47.19 sqm)
- Open plan kitchen, complete ▪ Juliet balcony with an island
- On-Site Residents' Gym & Spa ▪ 24 Hour Concierge Facilities



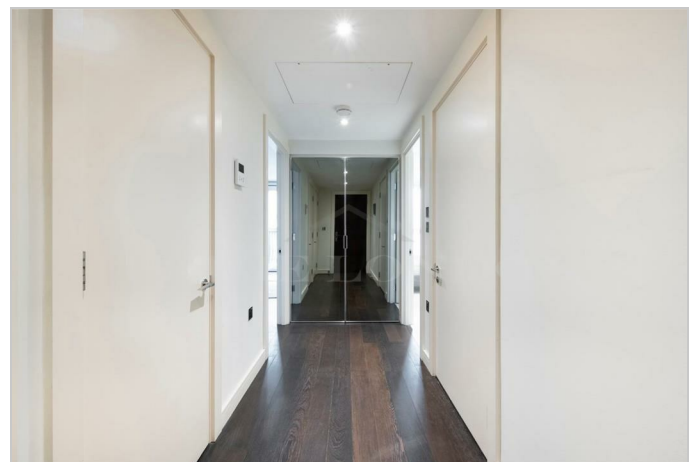
AVAILABLE NOW - This one-bedroom apartment in Bramah House, Grosvenor Waterside, totalling 508 sq ft (47.19 sqm), is available for lease through Prime London.

One of the standout features of the apartment is the open-plan kitchen, complete with an island. This design not only enhances the cooking experience but also creates a seamless flow into the reception room. The reception opens up to a Juliet balcony, providing a charming outlook, allowing natural light to fill the living area.

The apartment includes a well-sized bedroom, a bathroom, and the added benefit of a walk-in wardrobe.

Residents of Bramah House enjoy access to a gym, spa, and 24-hour concierge services, creating a perfect environment for modern living in one of London's most prestigious and dynamically changing areas.

Situated on the north side of the river by Chelsea Bridge, the open spaces of Battersea Park are also close by. The Victoria mainline and underground station (Victoria, Circle, and District lines, zone 1) are within close proximity. Grosvenor Waterside is located just half a mile away from Sloane Square underground station and within easy walking distance of the fashionable King's Road.



These particulars, whilst believed to be accurate are set out as a general outline only for guidance and do not constitute any part of an offer or contract. Intending purchasers should not rely on them as statements of representation of fact, but must satisfy themselves by inspection or otherwise as to their accuracy. No person in this firm's employment has the authority to make or give any representation or warranty in respect of the property.