

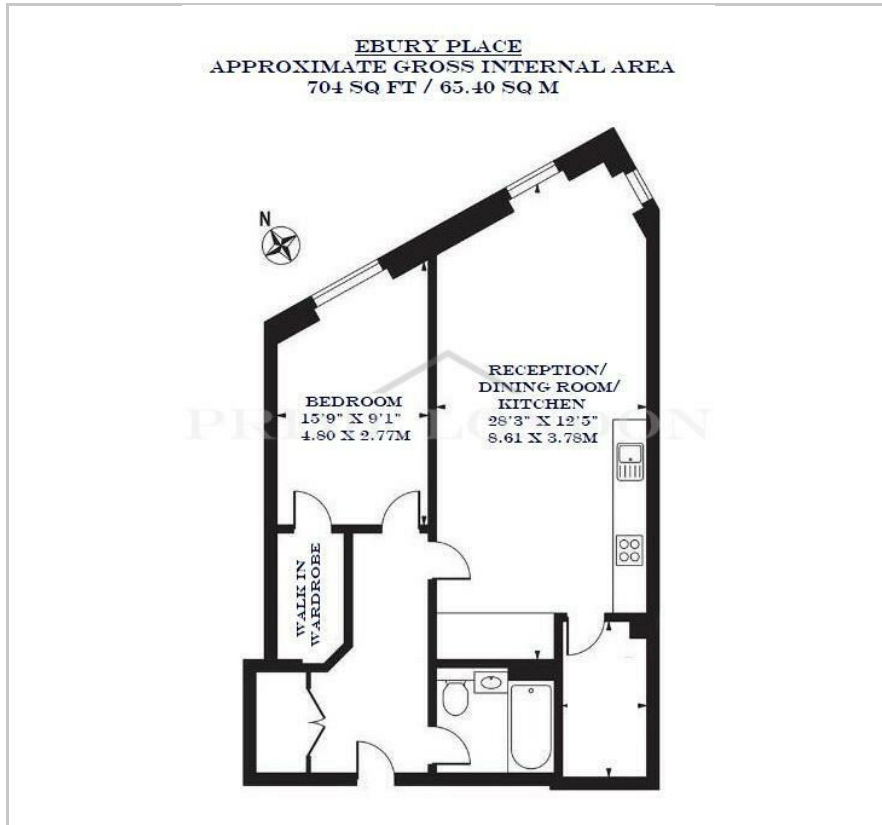
## Ebury Apartments

1B Sutherland Street, Victoria, SW1V 4BF

£848,000



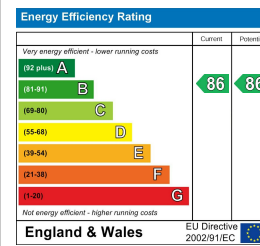
## Floor Plan



## Area Map



## Energy Efficiency Graph



## Viewing

By appointment. Contact us on 0207 052 1075 if you wish to arrange a viewing appointment for this property, or require further information.

- One bedroom apartment
- 704 sqft / 65.40 sqm
- 24 hour concierge
- Located near Victoria station

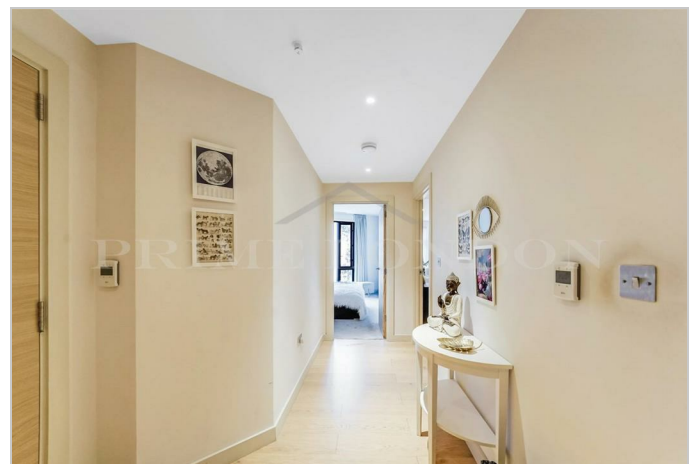


This stunning one-bedroom apartment with 704 sqft / 65.40 sqm of space in the modern Ebury Apartments development is available for chain free sale through prime London.

The apartment offers an open-plan design that effortlessly integrates the fully equipped kitchen with the reception room, forming a flexible living space featuring modern appliances and plenty of storage. The property also includes a stylish bedroom with a walk-in wardrobe.

The development offers a 24-hour concierge and is ideally situated close to Victoria Station and the amenities of Belgravia.

Located in the heart of Westminister, close to restaurants, shops and the easy connections that come with Zone 1 living. This is a prime central London location renowned for its culture and creativity with the world-class art gallery, Tate Britain, and many of the capital's most iconic and historic landmarks just a short walk away.



These particulars, whilst believed to be accurate are set out as a general outline only for guidance and do not constitute any part of an offer or contract. Intending purchasers should not rely on them as statements of representation of fact, but must satisfy themselves by inspection or otherwise as to their accuracy. No person in this firm's employment has the authority to make or give any representation or warranty in respect of the property.