



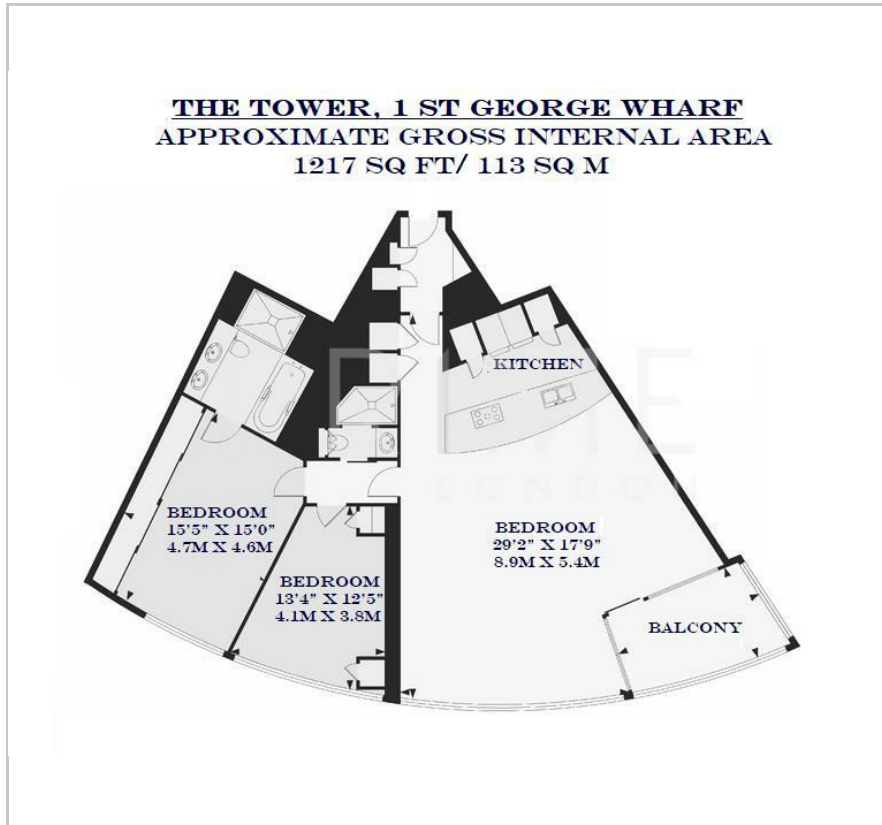
## The Tower

St George Wharf, Nine Elms, SW8 2DU

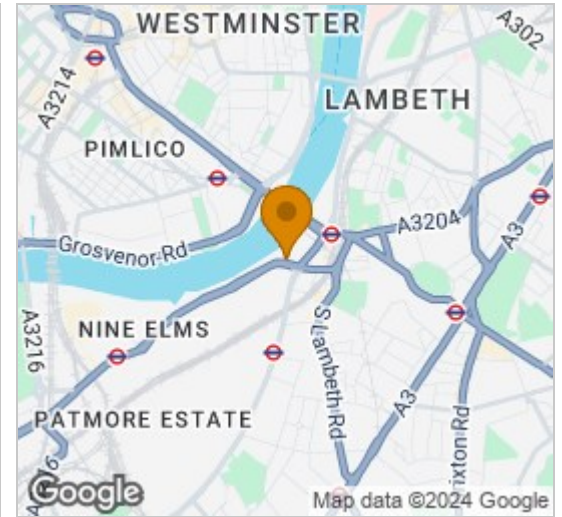
Asking Price £1,000,000



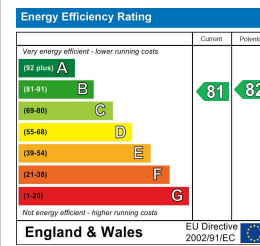
## Floor Plan



## Area Map



## Energy Efficiency Graph



## Viewing

By appointment. Contact us on 0207 928 6663 if you wish to arrange a viewing appointment for this property, or require further information.

- **Luxury two bedroom** ▪ **1,217 sq ft / 113 sq m apartment** (including winter garden)
- **Chain free sale** ▪ **Valet parking inclusive**
- **Infinity swimming pool,** ▪ **24 hour concierge** sauna and steam room

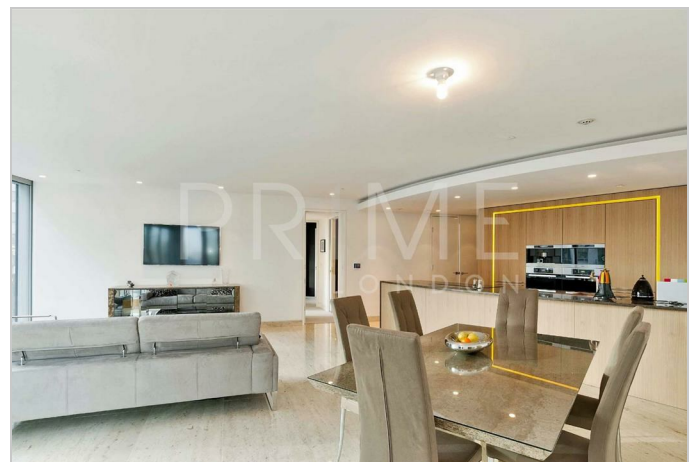


This high-specification two-bedroom apartment, available chain-free and totalling some 1,217 sq ft / 113 sq m (including winter garden), is available for sale through Prime London. Residents of The Tower also have access to an exclusive valet parking service.

The apartment offers a fully integrated kitchen with Miele appliances, high-specification bathrooms with exquisite tiling and fittings, comfort cooling, touch panel controls, recessed lighting and automated winter garden.

Amenities at The Tower include a 24 hour front door concierge service with valet parking, first floor gym, pool and sauna facilities as well as a private cinema and meeting rooms.

St George Wharf offers on site riverside bars and restaurants such as Waterfront London, The Riverside, Four Degree and Pop Art Sushi. For additional convenience other on site outlets include Tesco Express, Pret a Manger, Hudson's Dry Cleaners, Riverside Medical Centre, Dental Spa and more.



These particulars, whilst believed to be accurate are set out as a general outline only for guidance and do not constitute any part of an offer or contract. Intending purchasers should not rely on them as statements of representation of fact, but must satisfy themselves by inspection or otherwise as to their accuracy. No person in this firm's employment has the authority to make or give any representation or warranty in respect of the property.