



Victoria Square

Westminster, London, SW1W 0RA

Price Guide £3,950,000



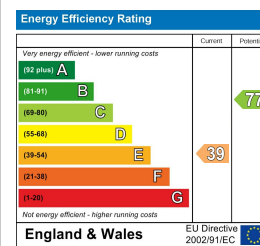
Floor Plan



Area Map



Energy Efficiency Graph



Viewing

By appointment. Contact us on 0207 052 1075 if you wish to arrange a viewing appointment for this property, or require further information.

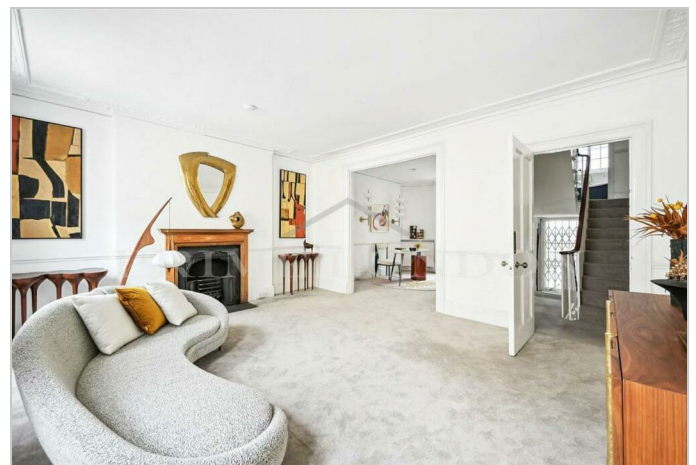
- Six bedroom Grade II listed ■ 2,664 sq ft (247.48 sqm) Victorian house
- Spread across five floors ■ Designed by architect Sir Matthew Wyatt
- A stone's throw from ■ Under 5 minute walk to Buckingham Palace and Victoria station amenities of Victoria Street

This six bedroom Grade II listed Victorian house, nestled in the prestigious Victoria Square in Westminster, is available for chain free sale through Prime London.

Totalling an impressive 2,664 sq ft (247.48 sqm) and spread across five floors, the property boasts a grand reception room perfect for entertaining, a separate dining room, and a well-appointed kitchen with access to a cozy terrace. The first floor features a spacious reception room and an additional bedroom, which can also serve as a study or home office. The upper floors comprise of six generously sized bedrooms and three bathrooms.

Designed by the renowned architect Sir Matthew Wyatt, this property retains many of its original features, such as intricate monkey tail window fasteners and classic fireplaces, offering a glimpse into the grandeur of Victorian design. The house also served as the family home of the late, acclaimed designer James Irvine.

Victoria Square's prime location places it just a five-minute stroll from Buckingham Palace, offering unparalleled access to the heart of London's vibrant city life while maintaining the tranquility of a residential square. For transportation, Victoria underground and rail station is less than a 5-minute walk away.



These particulars, whilst believed to be accurate are set out as a general outline only for guidance and do not constitute any part of an offer or contract. Intending purchasers should not rely on them as statements of representation of fact, but must satisfy themselves by inspection or otherwise as to their accuracy. No person in this firm's employment has the authority to make or give any representation or warranty in respect of the property.