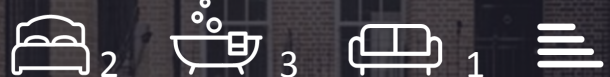




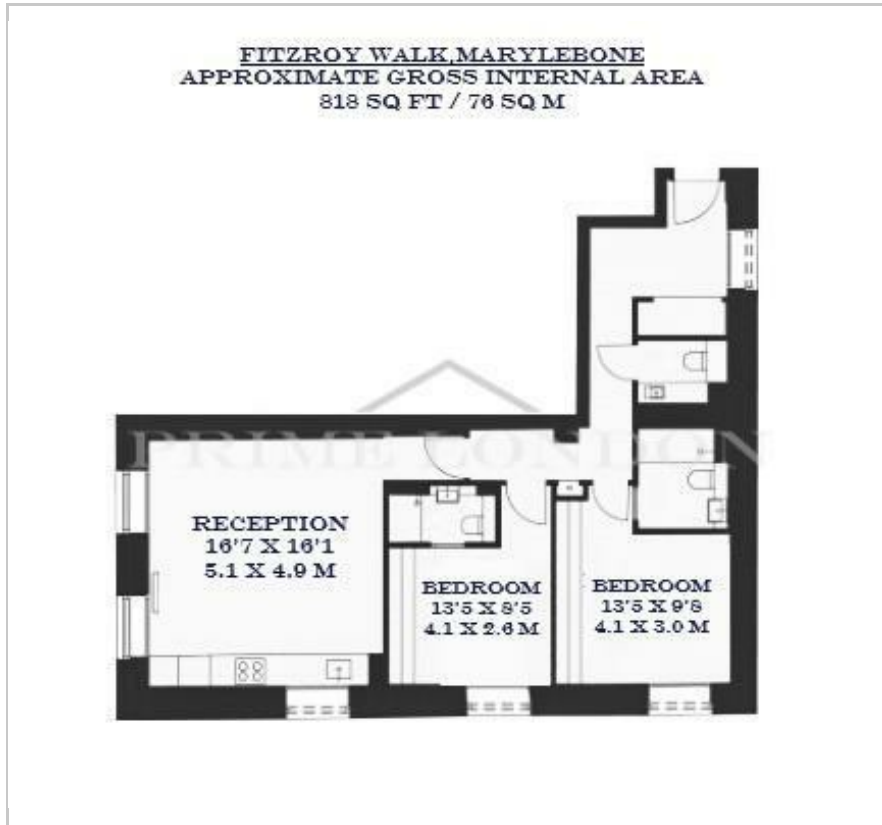
Fitzroy Walk

Marylebone, London, W1T 4JT

Price Guide £1,675,000



Floor Plan



Area Map



Energy Efficiency Graph



Viewing

By appointment. Contact us on 0207 052 1075 if you wish to arrange a viewing appointment for this property, or require further information.

- New prestigious boutique development
- Two townhouses, ten apartments, and three penthouse apartments
- Luxurious interior design by Box Nine 7
- Additional storage facilities and landscaped gardens
- Charlotte Street located just a short walk away
- Daytime concierge service and 24/7 on-site security

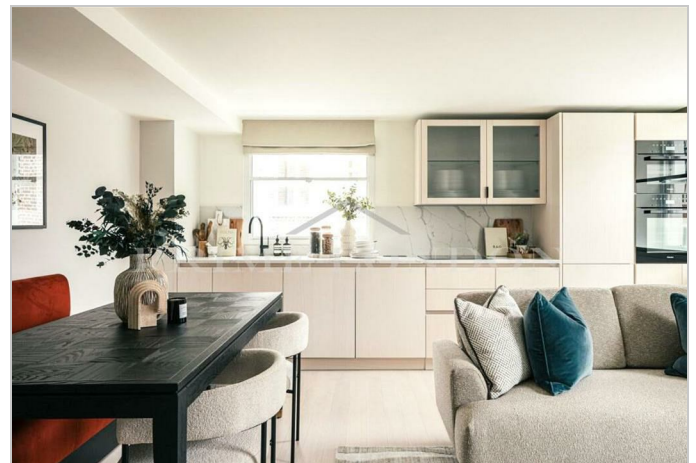
The Heritage Collection at Fitzroy Walk is a new prestigious boutique development located in Marylebone, offering a selection of townhouses and apartments, starting at £1,025,000 and available for sale through Prime London.

Each home has been meticulously curated to the highest standards, preserving their exquisite details and historical charm, enhanced by a luxurious interior finish. The kitchen features fully integrated Miele appliances, while the bedrooms include bespoke joinery and en-suite bathrooms.

The Heritage Collection at Fitzroy Walk consists of two townhouses, ten apartments, and three penthouse apartments across three buildings. These are set around beautifully landscaped gardens and behind restored Georgian gates. Residents will enjoy a daytime concierge service, 24/7 on-site security, and additional storage facilities within the building at no extra cost.

Situated in the heart of Fitzrovia, Fitzroy Walk benefits from a prime central London location. The area offers a vibrant mix of shops, cafes, and restaurants, with the renowned Charlotte Street just a short walk away. For cultural enthusiasts, the British Museum and the West End's theaters are nearby.

Excellent transport links include Goadge Street and Great Portland Street stations, providing easy access to the Northern, Circle, and Metropolitan lines. Euston and King's Cross St Pancras stations are also within close proximity, offering national and international rail services.



These particulars, whilst believed to be accurate are set out as a general outline only for guidance and do not constitute any part of an offer or contract. Intending purchasers should not rely on them as statements of representation of fact, but must satisfy themselves by inspection or otherwise as to their accuracy. No person in this firm's employment has the authority to make or give any representation or warranty in respect of the property.