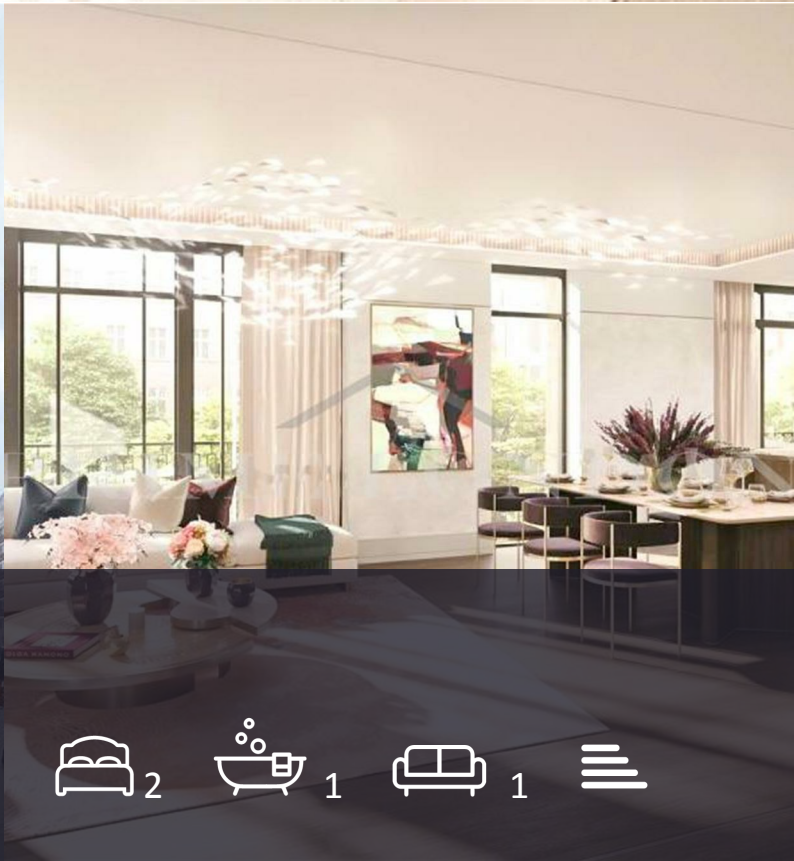




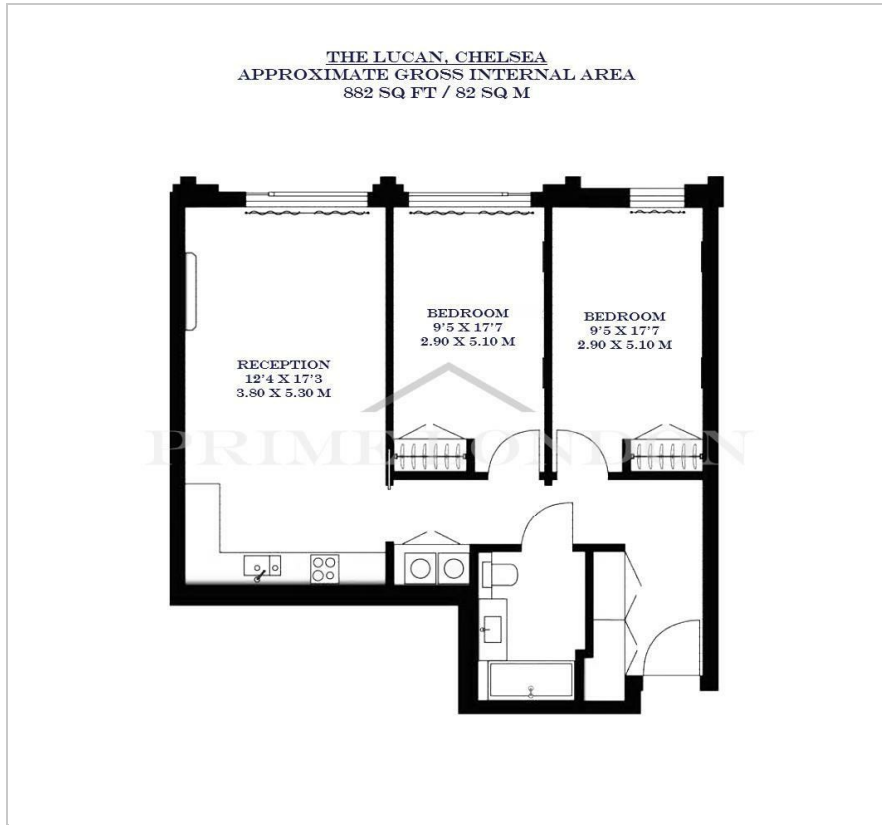
## The Lucan

2 Lucan Place, Chelsea, SW3 3PB

Price Guide £2,490,000



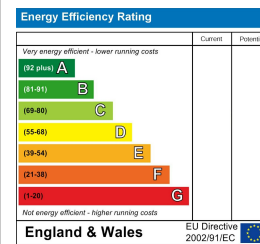
## Floor Plan



## Area Map



## Energy Efficiency Graph



## Viewing

By appointment. Contact us on 0207 052 1075 if you wish to arrange a viewing appointment for this property, or require further information.

- Selection of one, two and three bedroom apartments
- Located in the heart of Chelsea
- Interiors by Rive Gauche London
- Luxury resident's facilities including pool and gym
- Exclusive Elite Marriott Bonvoy Benefits
- New 'The Luminary' concierge service



This new luxury development located in the heart of Chelsea, The Lucan offers a selection of one, two and three bedroom apartments, starting at £1,770,500.

Inspired by Chelsea's Victorian-era mansions, The Lucan blends contemporary style with meticulous craftsmanship. Designed to harmonize with Kensington and Chelsea's rich history, each residence is uniquely curated to reflect its inhabitants' bold and original character. Inside, apartments are filled with natural light, with floor-to-ceiling windows designed to open up as balconies, transforming each space into a true haven.

Overseeing each bespoke residence, The Luminary is a new concierge service combining prestigious hospitality and Marriott Bonvoy benefits with an intuitive, unrivalled sense of service. Whether you want to work, play, relax, or retreat, The Luminary provides a unique mix of everyday, on-demand, and exclusive services. From housekeeping and travel to in-house tailoring, private dining, and the finest culinary experiences London offers, The Luminary is by your side.

The Lucan offers a gateway to London's most distinctive names, addresses, and experiences. From the West End's bright lights and shows to the exclusive brands of Bond Street. Think Mayfair, Belgravia, Sloane Square, and Savile Row. Enjoy Soho's vibrant nightlife or relax in your neighborhood's tranquil gardens and parks.

The Lucan places you within walking distance of Harrods and Harvey Nichols and provides access to top-tier healthcare and amenities. With a vibrant art scene and renowned universities like LSE and SOAS nearby.



These particulars, whilst believed to be accurate are set out as a general outline only for guidance and do not constitute any part of an offer or contract. Intending purchasers should not rely on them as statements of representation of fact, but must satisfy themselves by inspection or otherwise as to their accuracy. No person in this firm's employment has the authority to make or give any representation or warranty in respect of the property.