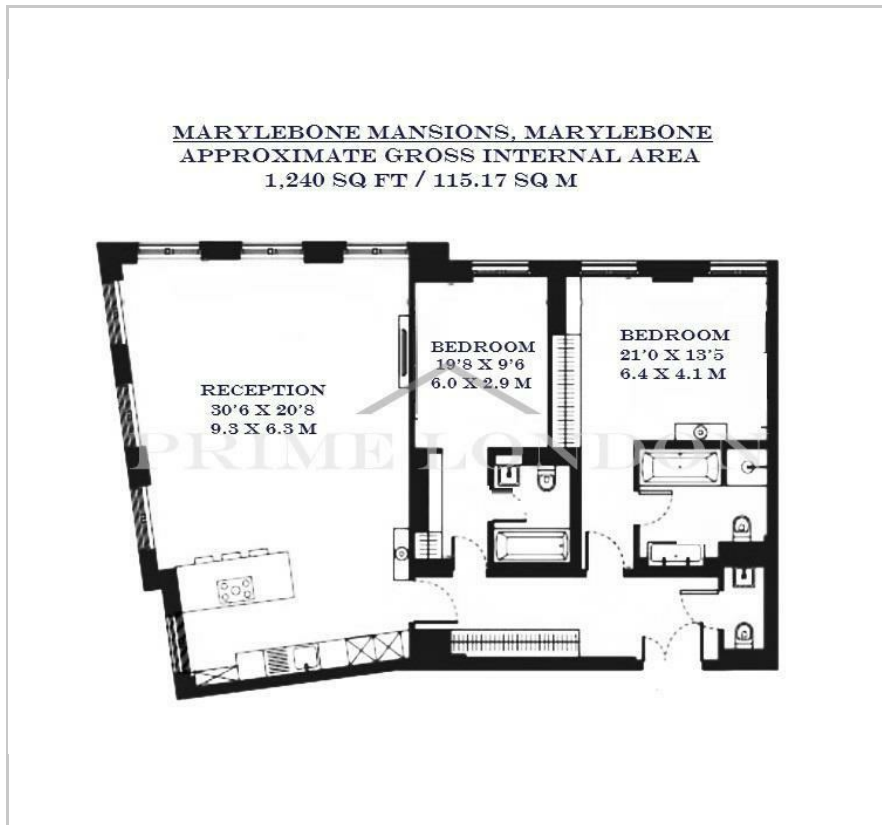


Marylebone Mansions

One Molyneux Street, Marylebone, W1H 5HU

£2,150,000

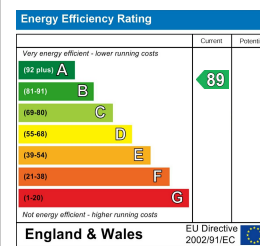
Floor Plan



Area Map



Energy Efficiency Graph



Viewing

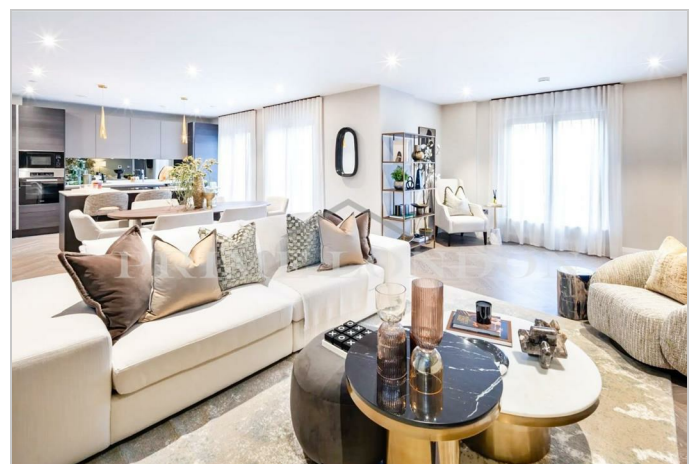
By appointment. Contact us on 0207 052 1075 if you wish to arrange a viewing appointment for this property, or require further information.

- Brand new development in Marylebone's W1 district
- 1,240 sq ft (115.17 sqm)
- Secure underground parking, grand reception and a private media lounge
- Luxury two bedroom apartment
- Epitomizing bespoke luxury design
- 24-hour concierge

Marylebone Mansions comprises 32 modern apartments concealed behind a discreet exterior that seamlessly integrates with its historic surroundings, nestled within the timeless charm of Marylebone's W1 district.

Carefully selected textures and materials pay homage to the area's heritage, with bespoke buff York handmade bricks complementing elegant Portland Stone window surrounds. Drawing inspiration from Georgian architecture, the building adds a contemporary touch to the classic silhouette of Marylebone townhouses.

Beyond the private facade lies a realm of luxury amenities, including secure underground parking, a grand reception lobby, concierge services, and a private media lounge exclusively for residents. Each residence epitomizes bespoke luxury design, creating an unparalleled living experience.



These particulars, whilst believed to be accurate are set out as a general outline only for guidance and do not constitute any part of an offer or contract. Intending purchasers should not rely on them as statements of representation of fact, but must satisfy themselves by inspection or otherwise as to their accuracy. No person in this firm's employment has the authority to make or give any representation or warranty in respect of the property.