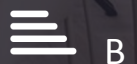


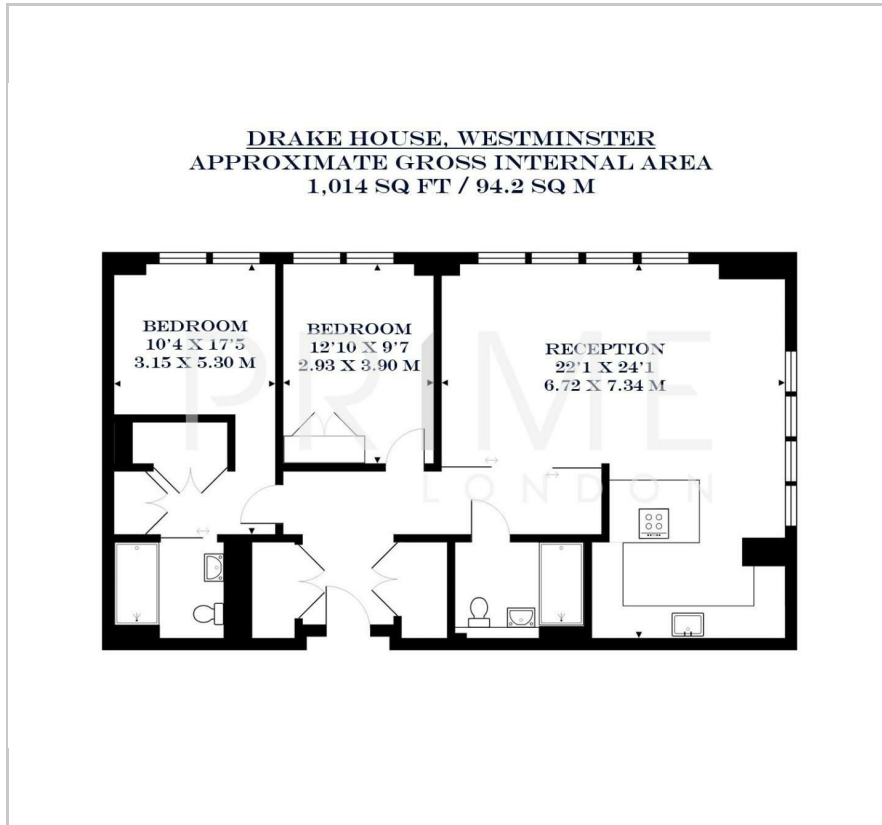
Drake House

Marsham Street, Westminster, SW1P 4LY

Asking Price £1,600,000



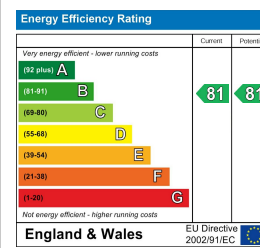
Floor Plan



Area Map



Energy Efficiency Graph



Viewing

By appointment. Contact us on 0207 052 1075 if you wish to arrange a viewing appointment for this property, or require further information.

- Two bedroom apartment
- High Specification Kitchen
- Moments away from shops and restaurants of Victoria Street
- 1,014 sq ft. (94.2 sqm)
- Centrally located in the heart of Westminster
- 24 hour concierge



This exceptional two-bedroom apartment, located in the distinguished Drake House development in the heart of Westminster, is available for sale through Prime London.

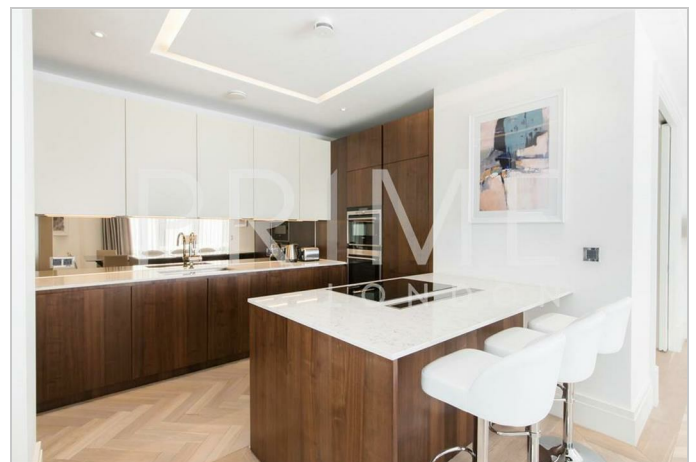
Offering an expansive 1,014 sq ft. (94.2 sqm) of bright, well-appointed living space, the generously proportioned reception area provides ample room for entertaining and relaxation. The open-plan design allows seamless integration with a sleek, modern kitchen, complete with Siemens appliances.

The principal bedroom features a spacious dressing area leading into a luxurious full bathroom, and there is an additional an equally inviting second bedroom.

This apartment also boasts a private parking space and benefits from 24-hour concierge and security services, providing convenience to residents.

Drake House places you within walking distance of London's iconic landmarks such as the River Thames, Parliament Square, and the vibrant West End.

Excellent transport links include proximity to Victoria Station, Westminster, and St James' Park Underground stations.



These particulars, whilst believed to be accurate are set out as a general outline only for guidance and do not constitute any part of an offer or contract. Intending purchasers should not rely on them as statements of representation of fact, but must satisfy themselves by inspection or otherwise as to their accuracy. No person in this firm's employment has the authority to make or give any representation or warranty in respect of the property.