



Salamanca Tower

4 Salamanca Place, SE1 7HB

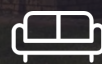
Asking Price £450,000



1



1

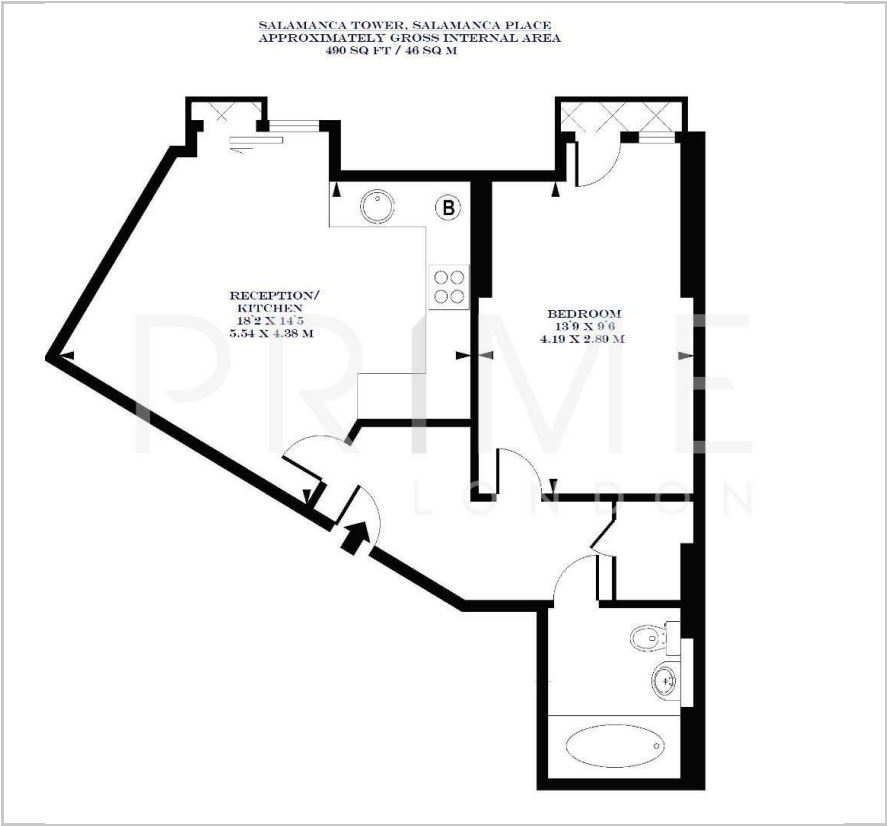


1

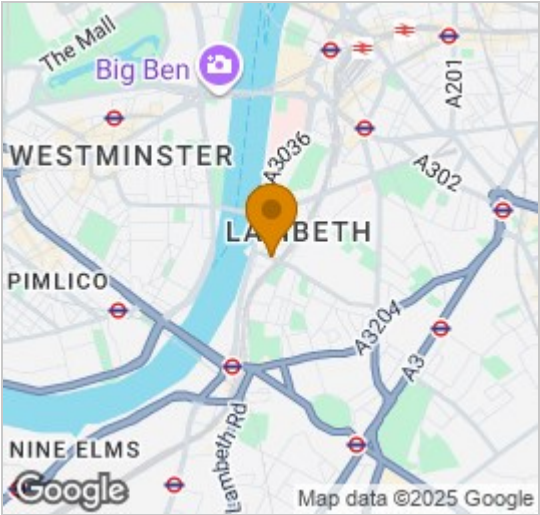


B

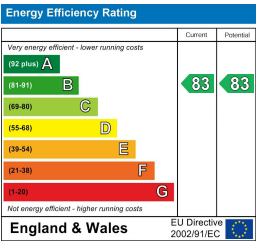
Floor Plan



Area Map



Energy Efficiency Graph



Viewing

By appointment. Contact us on 0207 928 6663 if you wish to arrange a viewing appointment for this property, or require further information.

- Modern one bedroom ■ 490 sq ft (46 sq m) apartment
- Excellent views of Parliament ■ Residents' only Roof Terrace and Big Ben
- Open plan reception room ■ Chain free with floor to ceiling windows



With excellent views up the River Thames of Big Ben, the Houses of Parliament and the London Eye, this high floor and bright one double bedroom apartment of 490 sq ft (46 sq m) within the modern Salamanca Tower, is available for chain free sale through Prime London. Parking is also available via sepearte negotiation.

The reception room (with floor to ceiling windows) offers a large living space which leads on to an open plan and modern integrated kitchen. The rest of the property further offers excellent storage, a large double bedroom and family bathroom.

Salamanca Tower, which boasts a large residents' only Roof Terrace, is within walking distance of the shops, restaurants, and attractions of London's South Bank and the West End. The rail/tube links of Vauxhall are within easy reach and there is a frequent bus service accessing most of London on the doorstep.



These particulars, whilst believed to be accurate are set out as a general outline only for guidance and do not constitute any part of an offer or contract. Intending purchasers should not rely on them as statements of representation of fact, but must satisfy themselves by inspection or otherwise as to their accuracy. No person in this firms employment has the authority to make or give any representation or warranty in respect of the property.