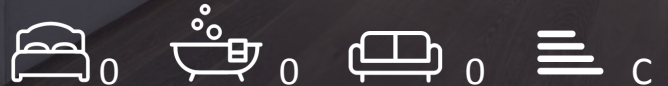




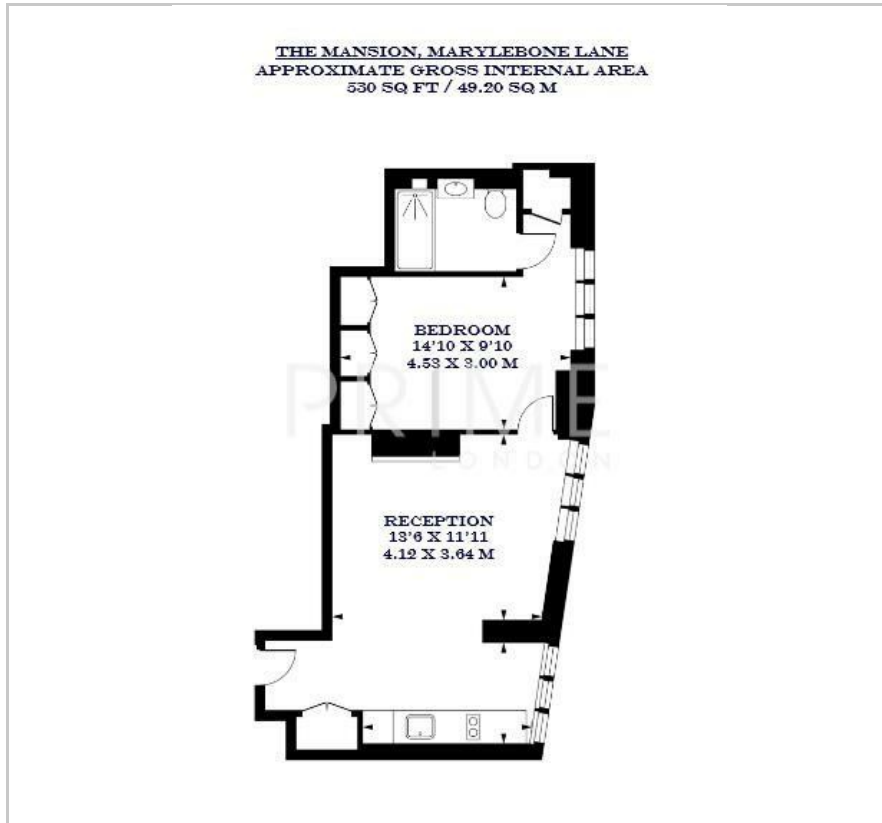
The Mansion

9 Marylebone Lane, London, W1U 1DB

Asking Price £1,500,000



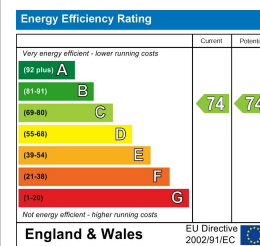
Floor Plan



Area Map



Energy Efficiency Graph



Viewing

By appointment. Contact us on 0207 052 1075 if you wish to arrange a viewing appointment for this property, or require further information.

- Brand new one bedroom ▪ 530 sq ft (49.20 sqm) apartment
- High specification finishes ▪ Private Bentley chauffeur service, swimming pool, and gym
- Located on the residential ▪ 24 hour concierge Marylebone Lane

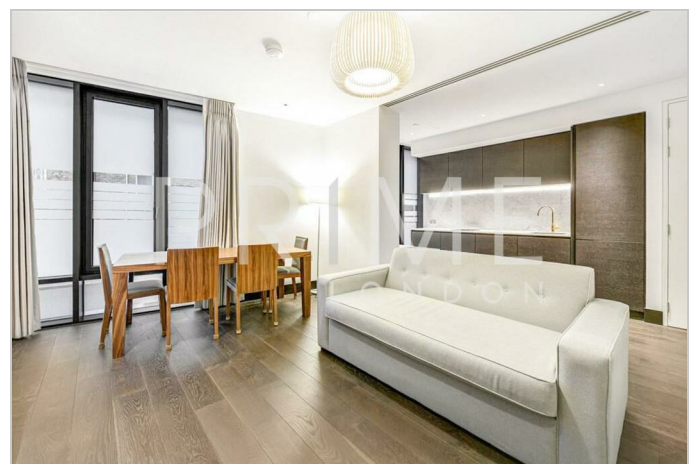
This stunning one-bedroom apartment, located in the brand new development, The Mansion, is available for chain free sale through Prime London,

Totalling 530 sq ft (49.20 sqm), this property features an open plan kitchen and reception area, maximizing space and natural light throughout. There is one spacious bedroom as well as a bathroom with a walk-in shower and marble tiling.

Residents enjoy 24-hour concierge services, access to a private Bentley chauffeur service, a luxurious swimming pool, and a fully equipped gym.

The Mansion is ideally situated on Marylebone Lane, placing you at the heart of the capital, within close proximity to the vibrant West End, the exclusive Mayfair district, and the serene greenery of Hyde Park.

Marylebone Lane, with its distinctive charm and character, stands out from its busier surroundings, offering a quieter, more intimate atmosphere filled with traditional streets, charming mews, and pockets of green space.



These particulars, whilst believed to be accurate are set out as a general outline only for guidance and do not constitute any part of an offer or contract. Intending purchasers should not rely on them as statements of representation of fact, but must satisfy themselves by inspection or otherwise as to their accuracy. No person in this firm's employment has the authority to make or give any representation or warranty in respect of the property.