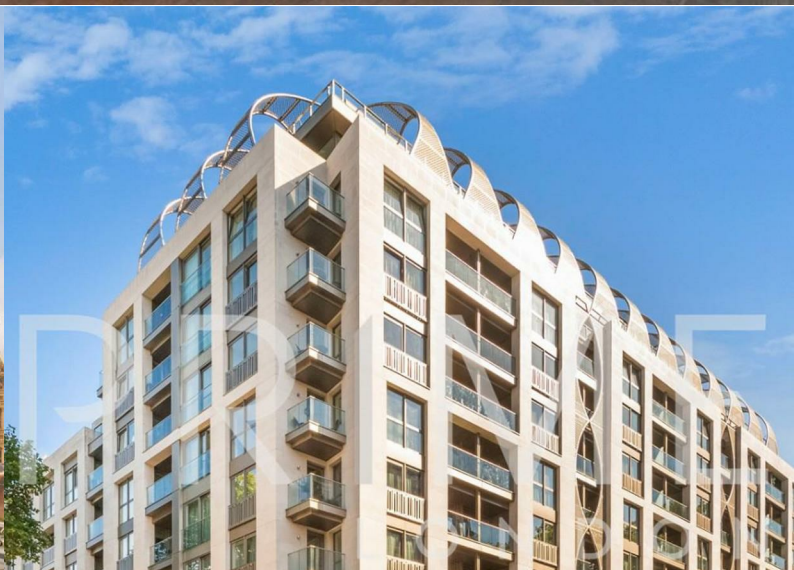


## The Courthouse

70 Horseferry Road, London, SW1P 2FE

£2,100 Per Week



3



3



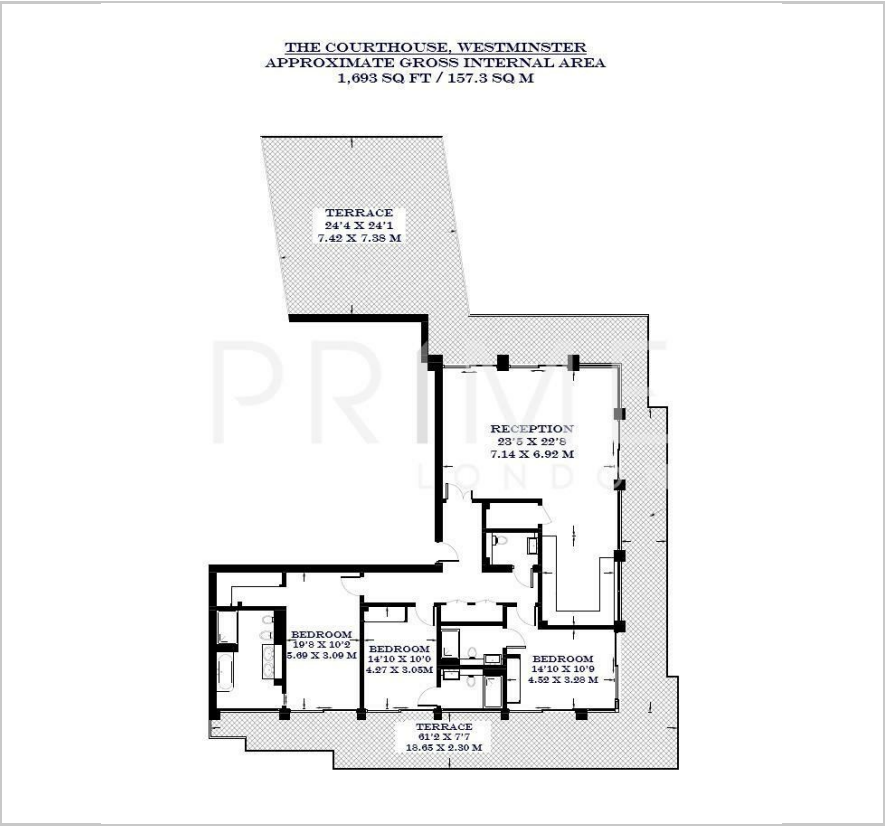
1



B



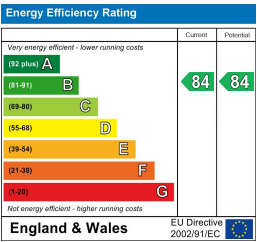
Floor Plan



Area Map



Energy Efficiency Graph



Viewing

By appointment. Contact us on 0207 052 1075 if you wish to arrange a viewing appointment for this property, or require further information.

- Three bedroom sub-penthouse apartment
- Large private terrace with views of London Eye and Houses of Parliament
- Resident's fitness suite and communal gardens
- Conveniently located near Victoria and St James stations
- 24 hour concierge

This exceptional sub-penthouse three bedroom apartment, located in The Courthouse, a prestigious development in the heart of Westminster, is available for lease through Prime London.

Spanning 1,693 sq ft (157.3 sqm), this light-filled apartment features a grand open-plan reception room, leading out onto a large private terrace offering spectacular views over the London skyline, including iconic sights like Big Ben and The London Eye. The sleek luxury kitchen is fully integrated with top-of-the-line Gaggenau appliances, including a wine cooler and coffee machine.

The master bedroom suite is generously proportioned and includes a walk-in wardrobe and an opulent en-suite bathroom. In addition to the master suite, there are two further double bedrooms each boasting en-suite bathrooms and exceptional views of Westminster's skyline. The apartment also includes a separate utility room, a guest cloakroom, and underground parking.

The home features natural stone flooring and timber floors, complemented by underfloor heating, comfort cooling, and a state-of-the-art audio system.

Residents of The Courthouse enjoy the luxury of a 24-hour concierge service, access to a fully equipped fitness suite, and beautiful communal gardens.



These particulars, whilst believed to be accurate are set out as a general outline only for guidance and do not constitute any part of an offer or contract. Intending purchasers should not rely on them as statements of representation of fact, but must satisfy themselves by inspection or otherwise as to their accuracy. No person in this firm's employment has the authority to make or give any representation or warranty in respect of the property.