



Parliament View Apartments

1 Albert Embankment, SE1 7XQ

£2,538 Per Week



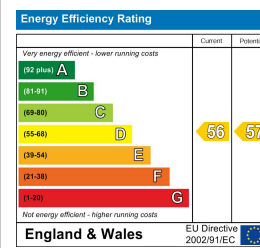
Floor Plan



Area Map



Energy Efficiency Graph



Viewing

By appointment. Contact us on 0207 928 6663 if you wish to arrange a viewing appointment for this property, or require further information.

- Extraordinary duplex penthouse apartment
- Extensive entertaining space overlooking the most iconic view of London
- 47' (14.3m) reception room on the eleventh floor with double height ceilings
- Direct access onto a large private roof terrace looking across the River
- 24 hour concierge service and resident's gymnasium
- Excellent location on the river between Lambeth and Vauxhall Bridge
- Within easy reach of the West End, Westminster, the City and South Bank
- Available for lease through Prime London



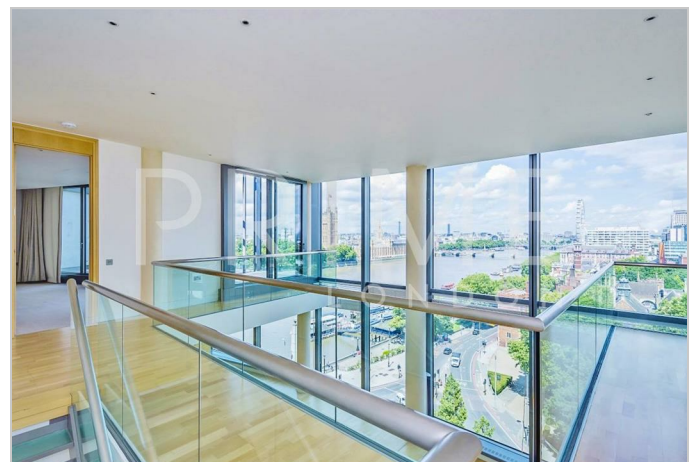
An extraordinary duplex penthouse apartment, with an extensive entertaining space overlooking the most iconic view of London, available for lease through Prime London.

The apartment comprises a 47' (14.3m) reception room on the eleventh floor with double height ceilings, floor to ceiling windows and dining area. There are also two double bedrooms both with en suite bathrooms.

On the twelfth floor is a master bedroom suite with en suite bathroom, dressing room and direct access onto a large private roof terrace looking across the River.

Parliament View itself offers a 24 hour concierge service, residents' gymnasium and an excellent location on the river between Lambeth and Vauxhall Bridge.

As a result the development is within easy reach of the West End, Westminster, the City and South Bank, Vauxhall rail and underground station.



These particulars, whilst believed to be accurate are set out as a general outline only for guidance and do not constitute any part of an offer or contract. Intending purchasers should not rely on them as statements of representation of fact, but must satisfy themselves by inspection or otherwise as to their accuracy. No person in this firm's employment has the authority to make or give any representation or warranty in respect of the property.