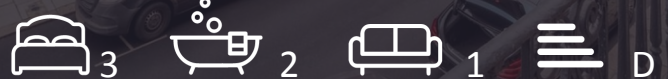




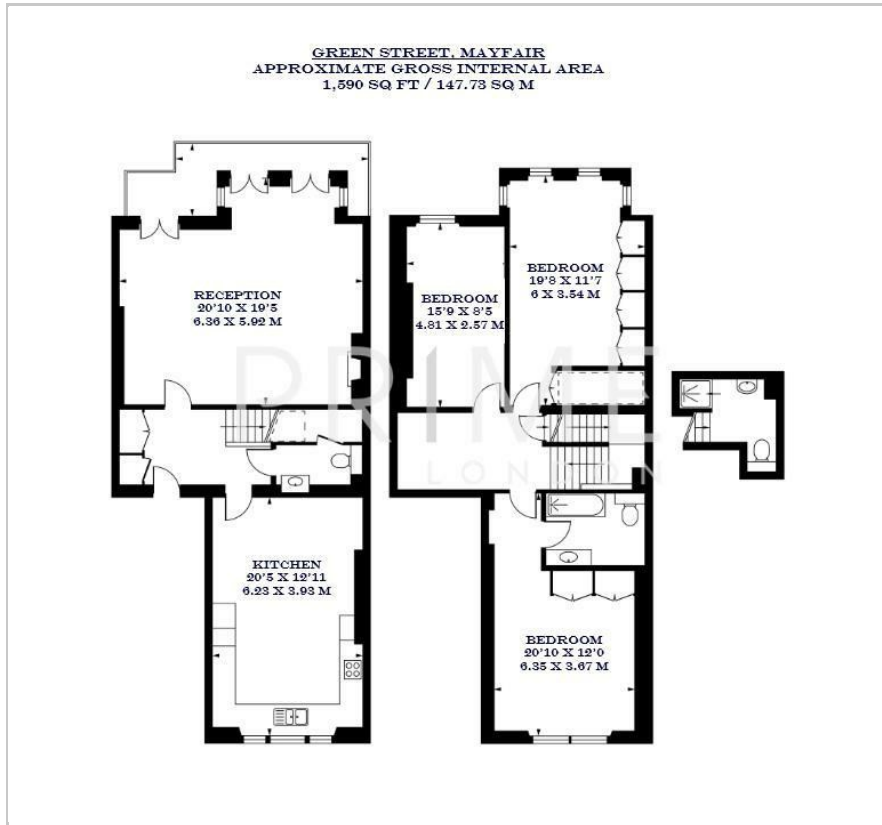
## 6 Green Street

Mayfair, London, W1K 6RW

£1,950 Per Week



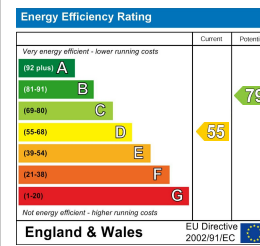
## Floor Plan



## Area Map



## Energy Efficiency Graph



## Viewing

By appointment. Contact us on 0207 052 1075 if you wish to arrange a viewing appointment for this property, or require further information.

- Three bedroom duplex ▪ 1,590 sq ft (147.73 sqm) apartment
- Floor to ceiling windows ▪ Three well proportioned bedrooms
- Located in the sought after Mayfair neighborhood ▪ Just 0.2 miles to Bond Street and Marble Arch stations



This bright and spacious three bedroom duplex apartment, located in the prestigious Mayfair neighborhood, is available for lease through Prime London.

Totalling 1,590 sq ft (147.73 sqm), this property comprises a spacious reception room, featuring floor to ceiling windows and a large private balcony, leading on to a quiet residential road. The fully integrated kitchen and breakfast room is also on the same floor, providing a separate area for cooking and casual dining. The second floor boasts three spacious bedrooms, one of which features an en-suite bathroom. There are an additional two bathrooms in the property.

Located on a quiet residential area in Mayfair, this property is in close proximity to the high end boutiques on New Bond Street and just a stone's throw away from Hyde Park.

For transportation, Bond Street and Marble Arch stations are just 0.5 miles away.



These particulars, whilst believed to be accurate are set out as a general outline only for guidance and do not constitute any part of an offer or contract. Intending purchasers should not rely on them as statements of representation of fact, but must satisfy themselves by inspection or otherwise as to their accuracy. No person in this firm's employment has the authority to make or give any representation or warranty in respect of the property.