



Romney House

47 Marsham Street, London, SW1P 3DS

£750,000



2



2

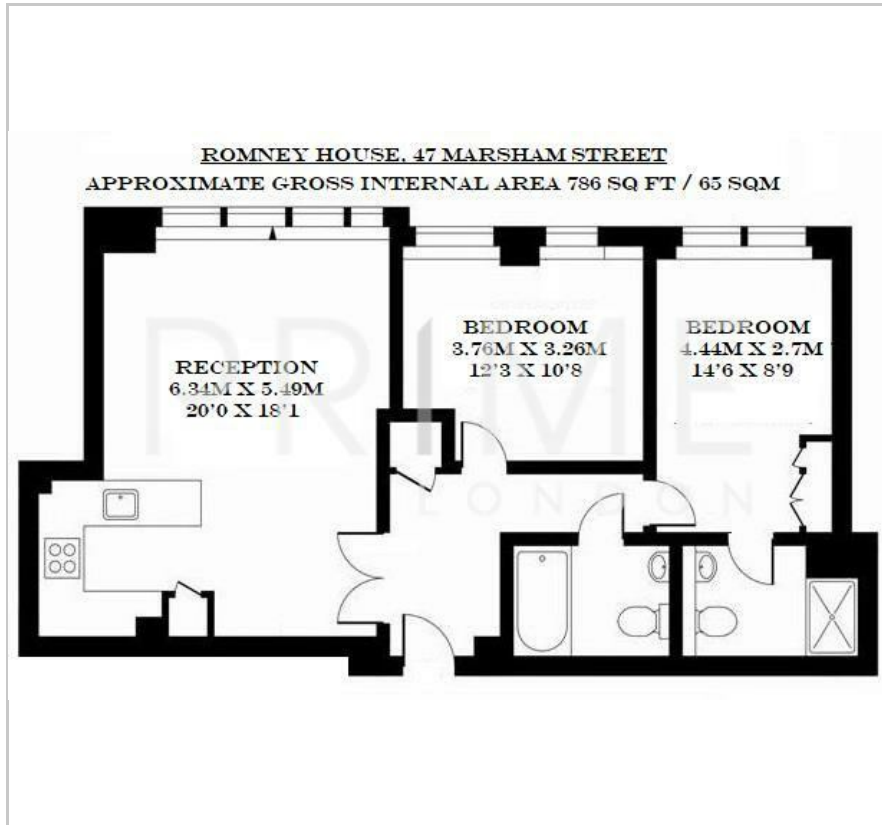


1



C

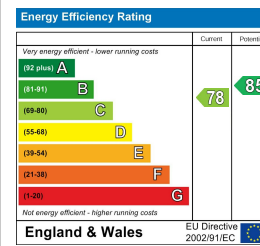
Floor Plan



Area Map



Energy Efficiency Graph



Viewing

By appointment. Contact us on 0207 052 1075 if you wish to arrange a viewing appointment for this property, or require further information.

- Two bedrooms and two bathrooms
- 785 sq ft (65 sqm)
- High floor with lift access
- Walking Distance of St James's Park, Westminster & Victoria
- Residents Leisure Suite with Gym, Sauna & Treatment Room
- 24 hour concierge



A spacious and fantastically located two-bedroom apartment in Romney House is available for chain-free sale through Prime London.

Totalling 785 sq ft (65 sq m), the property benefits from a bright reception room with a smart open-plan kitchen, a spacious master bedroom with an en-suite bathroom, a generously sized second bedroom, and a deluxe family shower room.

Residents can also enjoy access to Romney House's communal courtyard gardens, while a health and fitness suite is located on-site, along with a 24-hour concierge service.

Located on Marsham Street in Westminster, residents of Romney House are just a stone's throw from cherished London landmarks, including the Houses of Parliament, Westminster Abbey, and Tate Britain.

The closest station is St James's Park, less than a 10-minute walk away, while Victoria's mainline, Tube, and bus stations are just over a 15-minute walk away.



These particulars, whilst believed to be accurate are set out as a general outline only for guidance and do not constitute any part of an offer or contract. Intending purchasers should not rely on them as statements of representation of fact, but must satisfy themselves by inspection or otherwise as to their accuracy. No person in this firm's employment has the authority to make or give any representation or warranty in respect of the property.