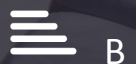




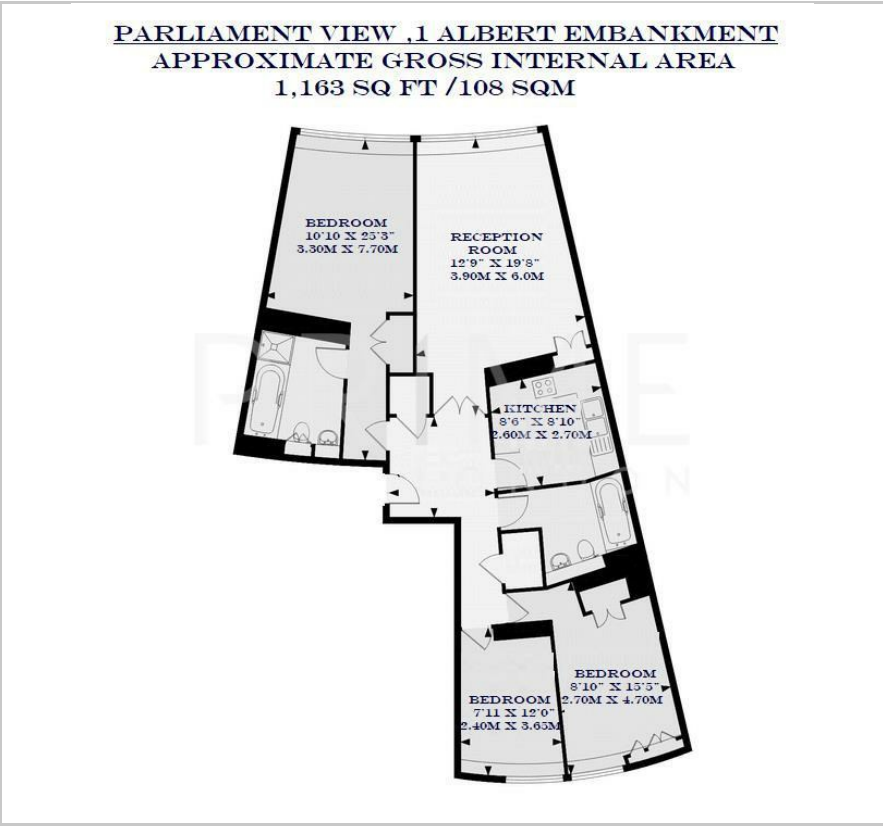
Parliament View Apartments

1 Albert Embankment, SE1 7XN

£865 Per Week



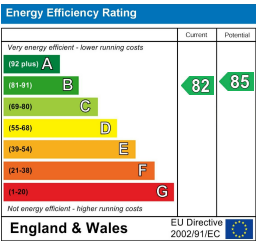
Floor Plan



Area Map



Energy Efficiency Graph



Viewing

By appointment. Contact us on 0207 928 6663 if you wish to arrange a viewing appointment for this property, or require further information.

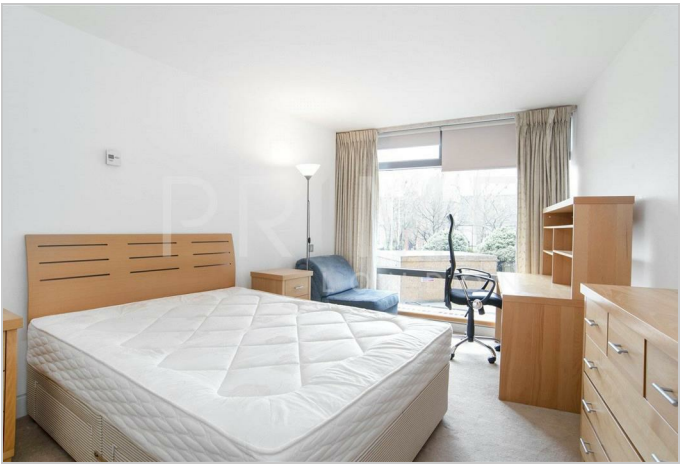
- Three bedroom apartment
- 1163 sqft (108sqm)
- Fully furnished and with parking
- Located next to The River Thames
- 24 hour concierge service
- Residents' gymnasium



This excellently located and fully furnished three bedroom apartment, set within the sought after Parliament View Apartments and totalling 1,163 sq ft (108 sqm), is available to rent through Prime London. The property also comes with a secure parking space.

The apartment comprises a bright reception, separate kitchen, primary bedroom with en suite, two further bedrooms, a separate family bathroom, wooden flooring and air cooling.

Parliament View itself offers a 24 hour concierge service, residents' gymnasium and an excellent location on the river between Lambeth and Vauxhall Bridge. As a result the development is within easy reach of the West End, Westminster, the City and South Bank. Vauxhall rail and underground station.



These particulars, whilst believed to be accurate are set out as a general outline only for guidance and do not constitute any part of an offer or contract. Intending purchasers should not rely on them as statements of representation of fact, but must satisfy themselves by inspection or otherwise as to their accuracy. No person in this firms employment has the authority to make or give any representation or warranty in respect of the property.