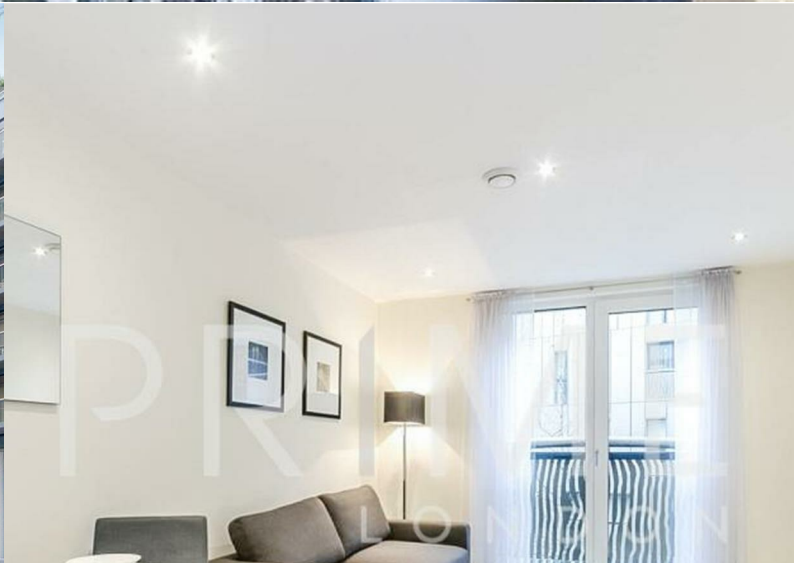




Woods House

Grosvenor Waterside, London, SW1W 8DE

Asking Price £575,000



1



1

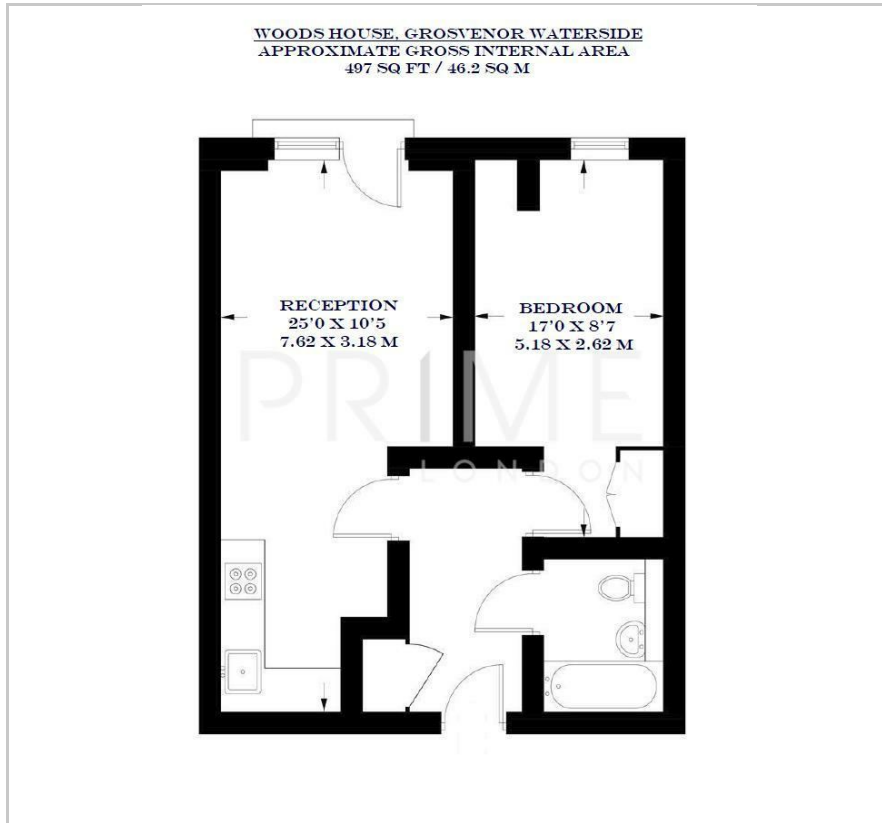


1

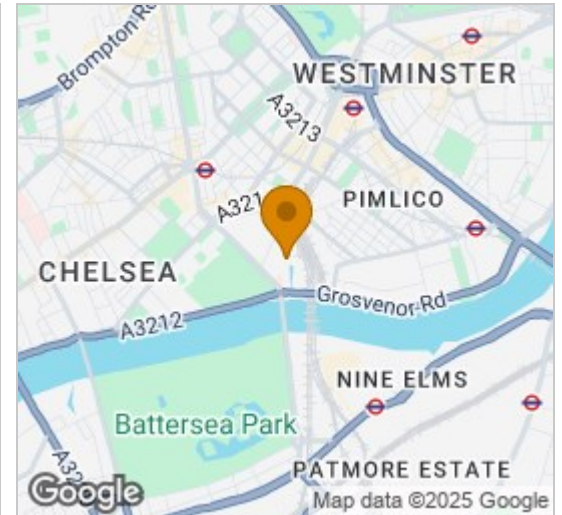


B

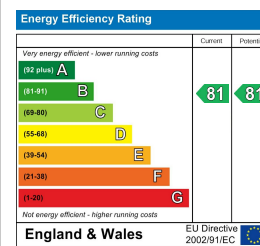
Floor Plan



Area Map



Energy Efficiency Graph



Viewing

By appointment. Contact us on 0207 052 1075 if you wish to arrange a viewing appointment for this property, or require further information.

- One bedroom apartment
- Juliet balcony
- Moments away from Sloane Square
- 497 sq ft (46 sqm)
- Resident's gym, spa/sauna and on-site cafe
- 24 hour concierge

This one-bedroom apartment in Grosvenor Waterside, totalling 497 square feet (46 sqm), is available for rent through Prime London.

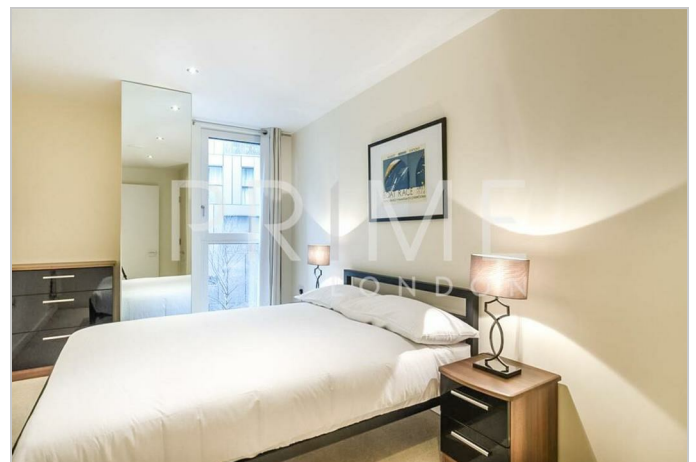
The reception room includes an open plan kitchen, and opens up to a Juliet balcony, providing a charming outlook and allows natural light to fill the living area.

The apartment includes a sized bedroom, a bathroom and the added benefit of being fully furnished.

It is a perfect environment for modern living in one of London's most prestigious and dynamically changing areas.

Situated on the north side of the river by Chelsea Bridge, the open spaces of Battersea Park are also close by. The Victoria mainline and underground station (Victoria, Circle and District lines, zone 1) is also within close proximity.

Grosvenor Waterside is located just half a mile away from Sloane Square underground station and within easy walking distance of fashionable Kings Road.



These particulars, whilst believed to be accurate are set out as a general outline only for guidance and do not constitute any part of an offer or contract. Intending purchasers should not rely on them as statements of representation of fact, but must satisfy themselves by inspection or otherwise as to their accuracy. No person in this firm's employment has the authority to make or give any representation or warranty in respect of the property.