



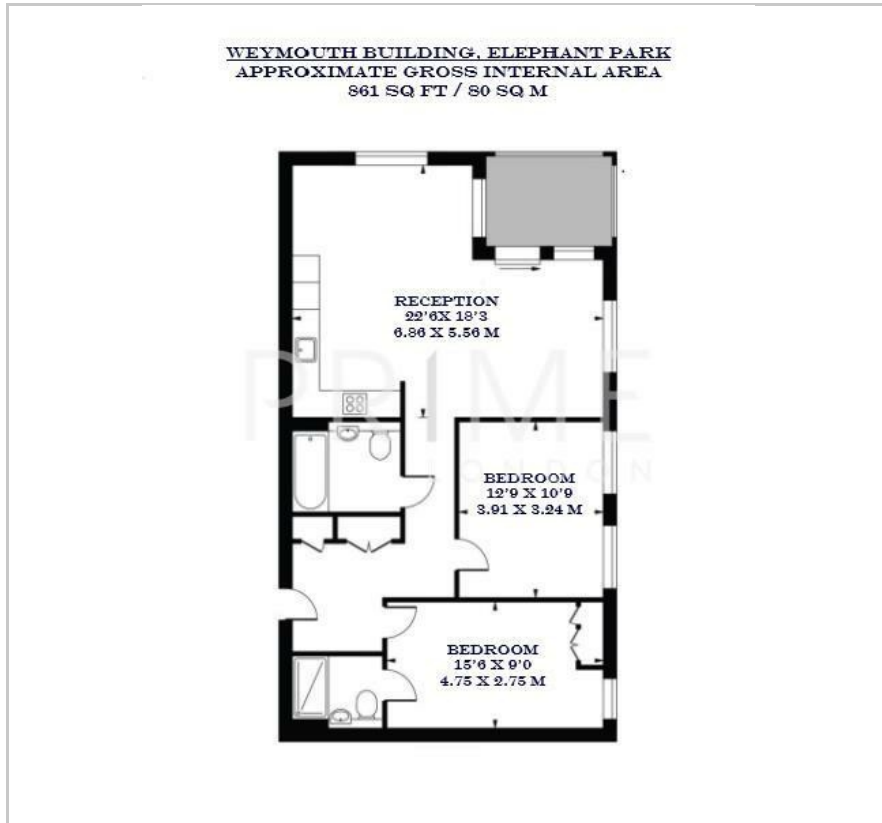
Weymouth Building

Elephant Park, London, SE17 1GB

Asking Price £850,000



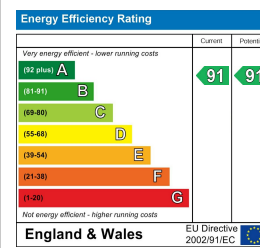
Floor Plan



Area Map



Energy Efficiency Graph



Viewing

By appointment. Contact us on 0207 928 6663 if you wish to arrange a viewing appointment for this property, or require further information.

- Two bedroom apartment
- Private balcony
- Residents' gym, grow garden and communal spaces
- 861 sq ft (80 sqm)
- Located in the heart of Zone 1
- 24 hour concierge



This stunning, spacious two-bedroom apartment, nestled within the highly sought-after Elephant Park development, is available for sale through Prime London.

Totalling 861 sq ft (80 sqm), this exceptional apartment features a naturally bright and expansive open-plan kitchen and reception area, which seamlessly extends to a private balcony. Both double bedrooms are generously sized and come complete with fitted wardrobes, with the principal bedroom further enhanced by a sleek ensuite bathroom.

Residents can enjoy an array of first-class amenities, including a 24-hour concierge service, a modern gym, a versatile function room, and a rooftop grow garden, alongside beautifully landscaped green spaces.

Located in the heart of Zone 1, this property is in close proximity to a variety of shops, restaurants and amenities. Elephant & Castle Underground Station is just a short stroll away, providing direct connections to the Bakerloo and Northern Lines, as well as numerous bus routes.



These particulars, whilst believed to be accurate are set out as a general outline only for guidance and do not constitute any part of an offer or contract. Intending purchasers should not rely on them as statements of representation of fact, but must satisfy themselves by inspection or otherwise as to their accuracy. No person in this firm's employment has the authority to make or give any representation or warranty in respect of the property.