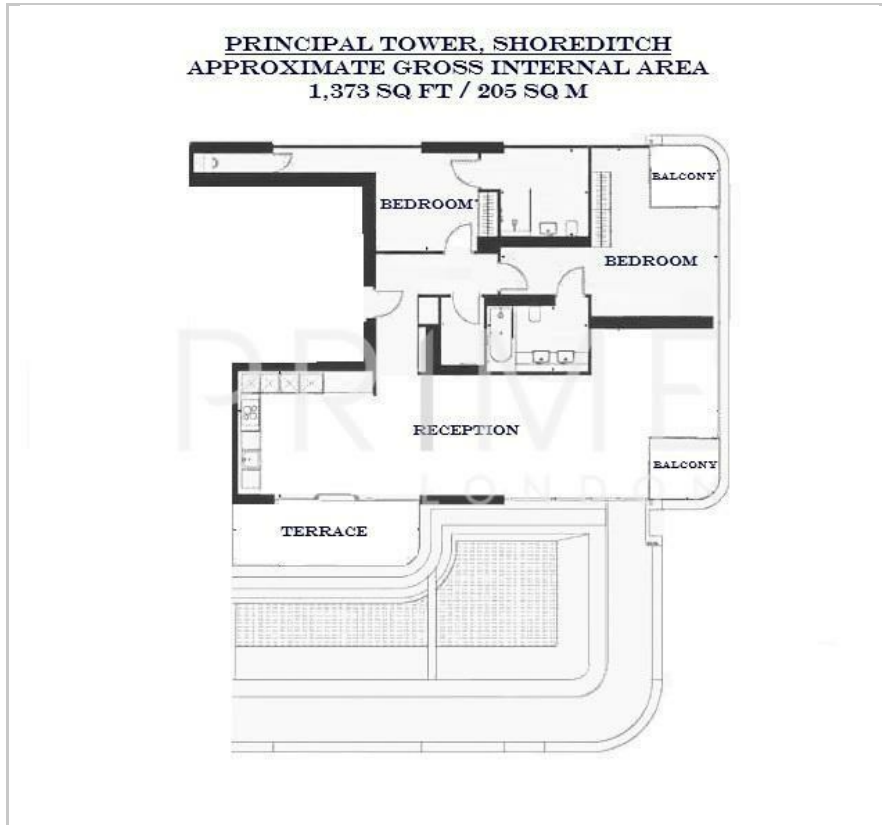


## Principal Tower

Principal Place, London, EC2A 2FG

Asking Price £2,835,000

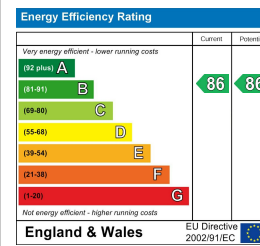
## Floor Plan



## Area Map



## Energy Efficiency Graph



## Viewing

By appointment. Contact us on 0207 052 1075 if you wish to arrange a viewing appointment for this property, or require further information.

- Two bedroom penthouse ■ 1,373 sq ft (205 sqm) apartment
- Breathtaking views of London's skyline ■ Resident's first class amenities
- Nestled between Shoreditch and the City ■ 24 hour concierge



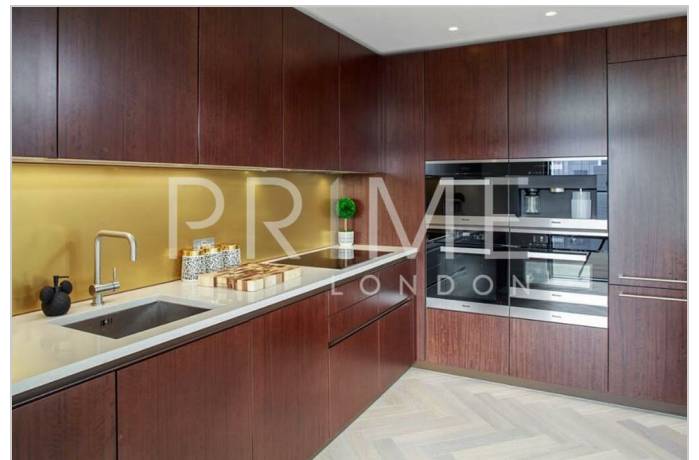
This brand new and luxurious, two-bedroom penthouse, located in the prestigious Principal Tower, is available for sale through Prime London.

Encompassing 1,373 sq ft (205 sqm), this property offers three private terraces with breathtaking, uninterrupted views of London's iconic skyline. There is an open-concept living and kitchen area, designed with the finest materials and high-end finishes throughout. Both bedrooms are accompanied by en-suite bathrooms, while an additional powder room ensures convenience for guests.

The private terraces extend the living space outdoors, perfect for both relaxation and entertaining against a backdrop of London's most celebrated landmarks.

Residents of Principal Tower indulge in an array of first-class amenities, including a stunning infinity pool and rejuvenating spa to a state-of-the-art gym that overlooks the vibrant piazza. With a cinema room, residents' lounge, and 24-hour concierge service reminiscent of five-star hospitality, this penthouse offers a lifestyle of sophistication and ease.

Nestled between the trendy Shoreditch neighborhood and the bustling City of London, residents are just moments away from world-class dining, shopping, and cultural landmarks. Excellent transport links, including nearby Liverpool Street Station, provide seamless connections to the rest of London and beyond.



These particulars, whilst believed to be accurate are set out as a general outline only for guidance and do not constitute any part of an offer or contract. Intending purchasers should not rely on them as statements of representation of fact, but must satisfy themselves by inspection or otherwise as to their accuracy. No person in this firm's employment has the authority to make or give any representation or warranty in respect of the property.