

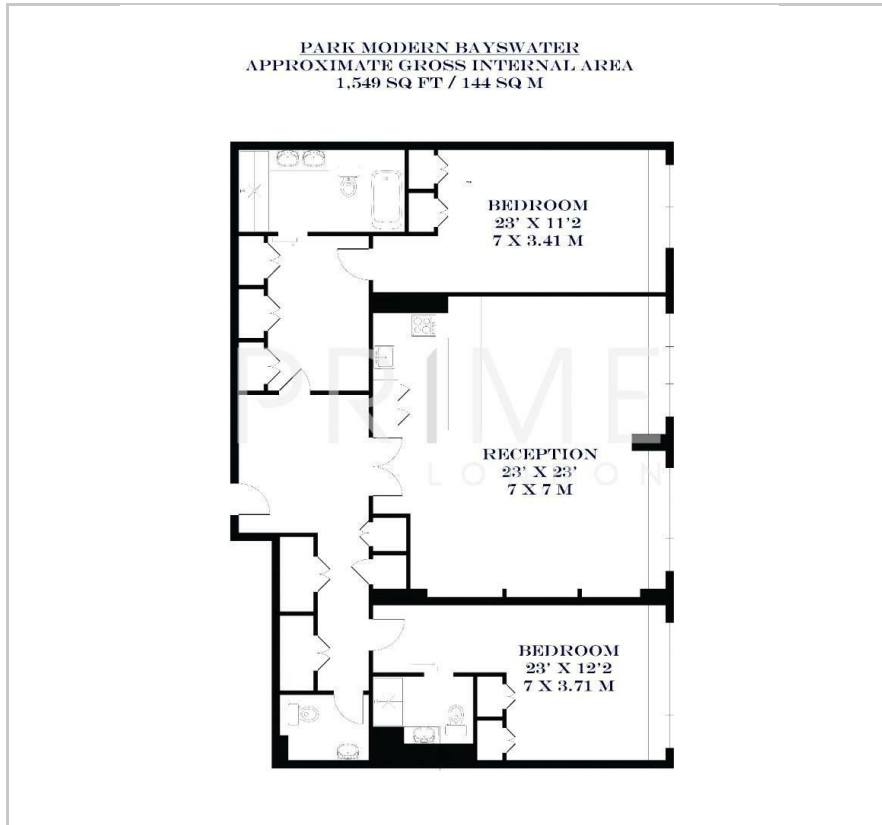
## Park Modern

123 Bayswater Road, London, W2 3JH

Price Guide £3,600,000



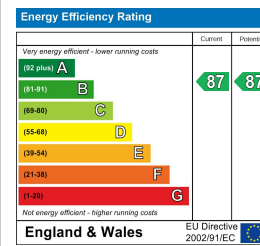
## Floor Plan



## Area Map



## Energy Efficiency Graph



## Viewing

By appointment. Contact us on 0207 052 1075 if you wish to arrange a viewing appointment for this property, or require further information.

- A selection of brand new ▪ Stunning architecture apartments
- Facing the iconic Hyde Park ▪ World class facilities including gym, spa and pool
- A stone's throw away from ▪ 24 hour concierge Queensway Station



Nestled on the edge of London's iconic Hyde Park, Park Modern is offering new, contemporary apartments, available for chain free sale through Prime London.

These meticulously designed apartments combine stunning, modern architecture with breathtaking, south-facing views. The spacious apartment layout includes large bedrooms and an expansive reception area, perfectly tailored for both relaxation and socializing. This rare opportunity for park-side living makes every day feel like a retreat. The state-of-the-art kitchens are outfitted with Gaggenau appliances and the highest level of finishes.

Beyond the home, Park Modern offers unparalleled wellness facilities: a fully equipped gym for maintaining fitness and a tranquil spa, a treatment room and salon, as well as a cinema room.

Living at Park Modern makes Hyde Park an extension of your own backyard, offering a unique urban oasis. It is an ultimate combination of luxury, convenience, and nature at your doorstep.

\*\*\*Images are indicative only\*\*\*



These particulars, whilst believed to be accurate are set out as a general outline only for guidance and do not constitute any part of an offer or contract. Intending purchasers should not rely on them as statements of representation of fact, but must satisfy themselves by inspection or otherwise as to their accuracy. No person in this firm's employment has the authority to make or give any representation or warranty in respect of the property.