

## Lavender Place

85 Royal Mint Street, Tower Bridge, E1 8AS

£600 Per Week



1



1



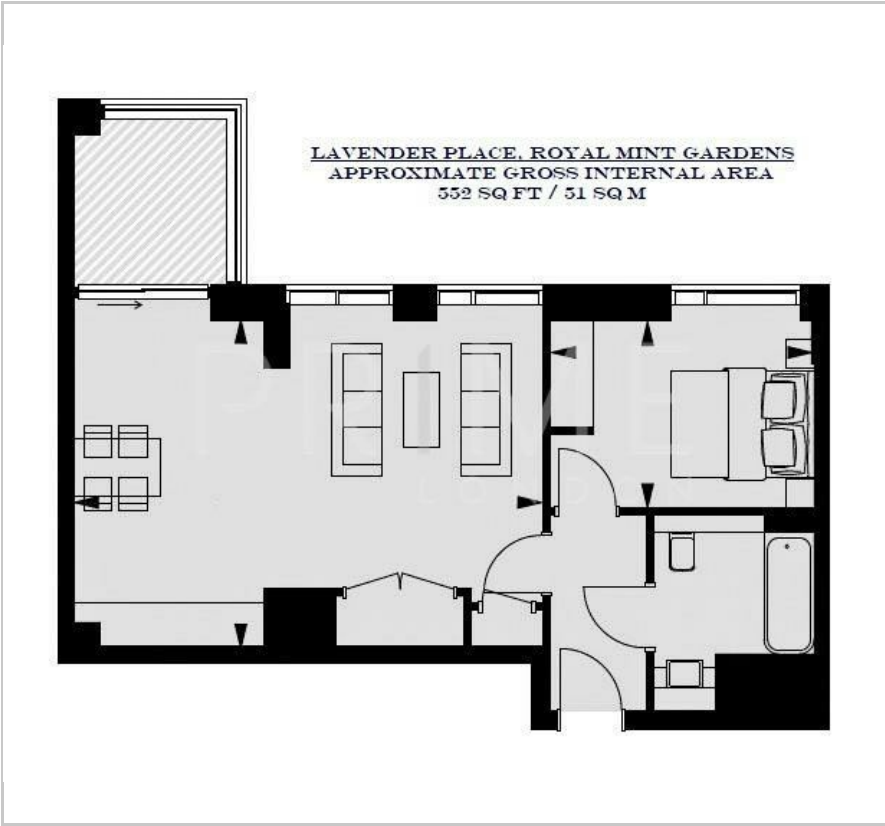
1



B



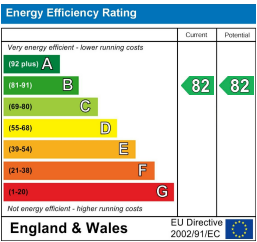
Floor Plan



Area Map



Energy Efficiency Graph



Viewing

By appointment. Contact us on 0207 052 1075 if you wish to arrange a viewing appointment for this property, or require further information.

- Fully Furnished
- Private screening room
- Landscaped exterior gardens
- 614 sq ft / 57 sq m
- Private health club with gym, swimming pool and spa
- 24 hour concierge

This elegant and bright 614 sq ft (57 sqm) one-bedroom apartment, situated in the exclusive Royal Mint Gardens development, is available for lease exclusively through Prime London.

The property features a spacious reception with open-plan kitchen, a double bedroom with bespoke fitted storage, a high specification bathroom and large floor to ceiling windows with northern views.

Royal Mint Gardens offers a 24 hour concierge, private health club with gym, swimming pool and spa, private screening room and landscaped exterior gardens. The development is situated in the heart of historic London, moments from Tower Bridge, St Katharine's Docks and the Tower of London.



These particulars, whilst believed to be accurate are set out as a general outline only for guidance and do not constitute any part of an offer or contract. Intending purchasers should not rely on them as statements of representation of fact, but must satisfy themselves by inspection or otherwise as to their accuracy. No person in this firm's employment has the authority to make or give any representation or warranty in respect of the property.