

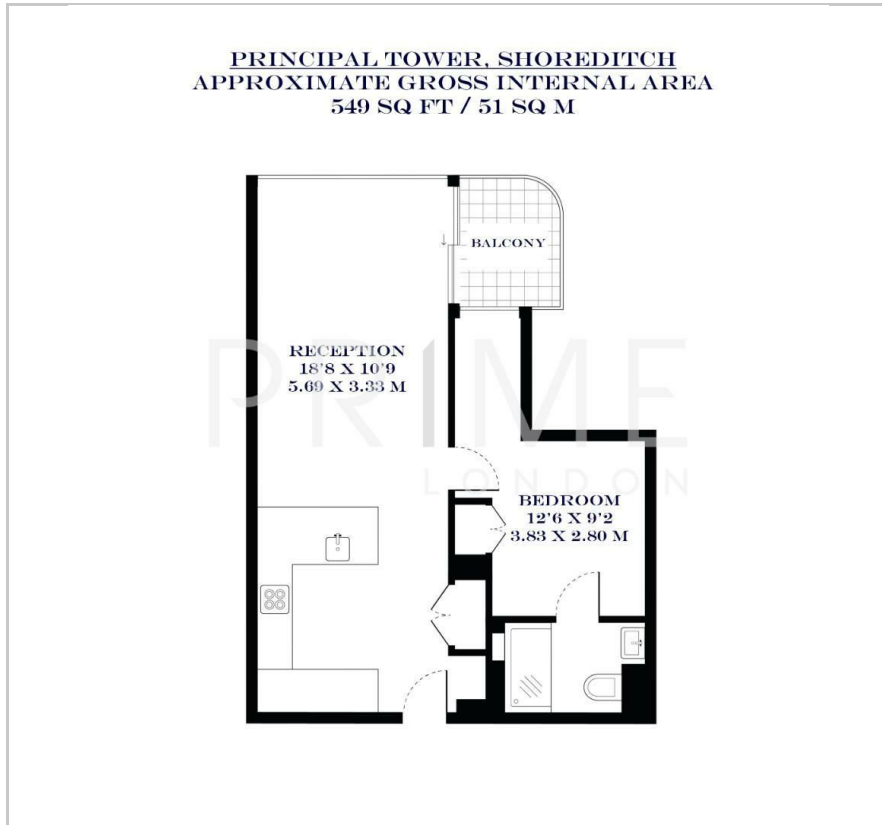
Principal Tower

The City, EC2A 2FD

£784 Per Week



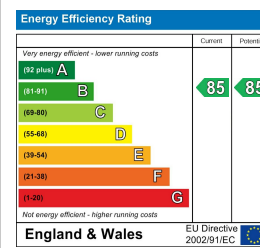
Floor Plan



Area Map



Energy Efficiency Graph



Viewing

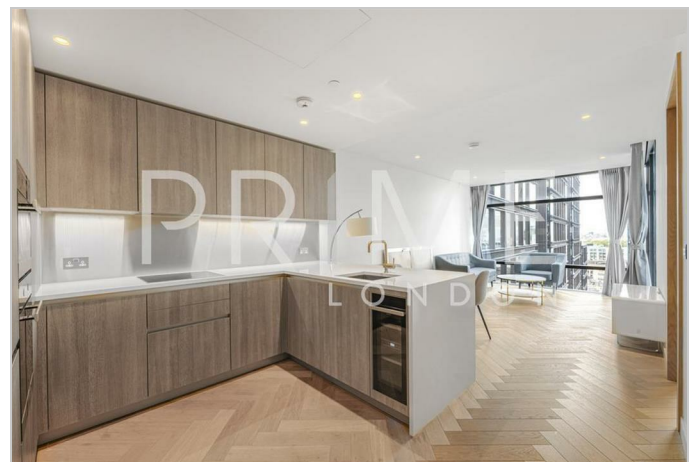
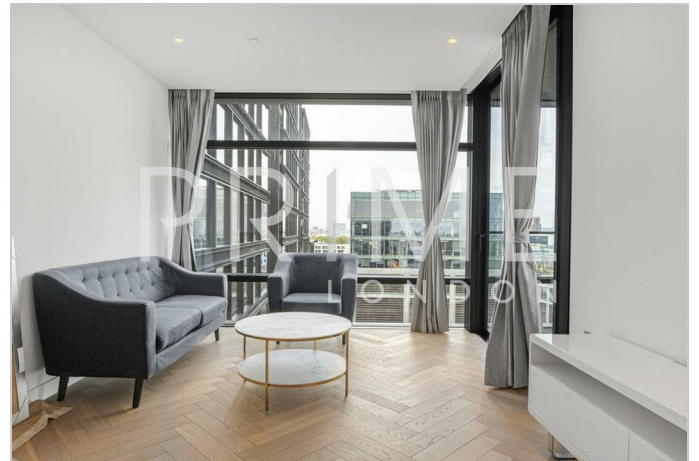
By appointment. Contact us on 0207 052 1075 if you wish to arrange a viewing appointment for this property, or require further information.

- Available now!
- Luxury 1 bed apartment - 549 sq ft / 51 sq m
- 13th Floor with private balcony
- Fully furnished
- Sauna, jacuzzi, steam room
- 24 hour concierge service and gym

This luxury 1-bedroom, 1-bathroom apartment on the 13th floor of Principal Tower offers stunning, expansive views of London. Fully furnished and available to rent through Prime London, this apartment maximizes its outlook with a thoughtfully designed layout.

The property features a spacious double bedroom with ample built-in storage, a generous open-plan living area, and a private balcony, totaling 549 sq ft internally with an additional 42 sq ft terrace.

Principal Tower is ideally located in the heart of the City of London, close to the London Stock Exchange and high-end fashion at the Royal Exchange. With five major transport hubs nearby, you can easily access all corners of the capital. Don't miss this rare opportunity to live in such a prestigious location!



These particulars, whilst believed to be accurate are set out as a general outline only for guidance and do not constitute any part of an offer or contract. Intending purchasers should not rely on them as statements of representation of fact, but must satisfy themselves by inspection or otherwise as to their accuracy. No person in this firm's employment has the authority to make or give any representation or warranty in respect of the property.