

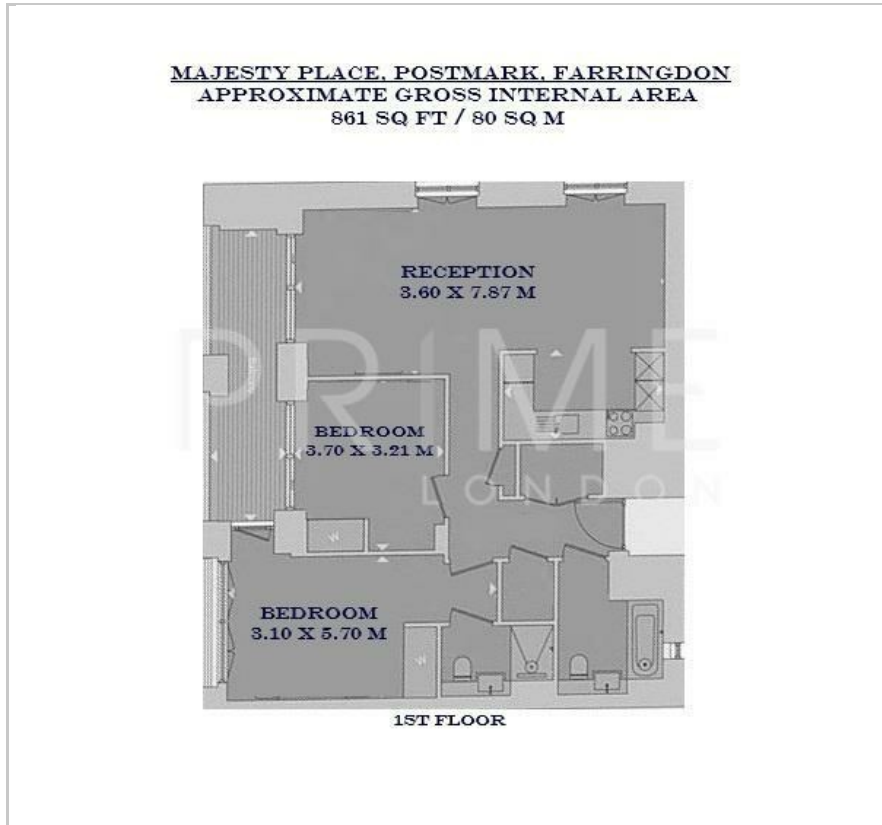
Majesty House

1 Postal Way, Postmark, WC1X 0FG

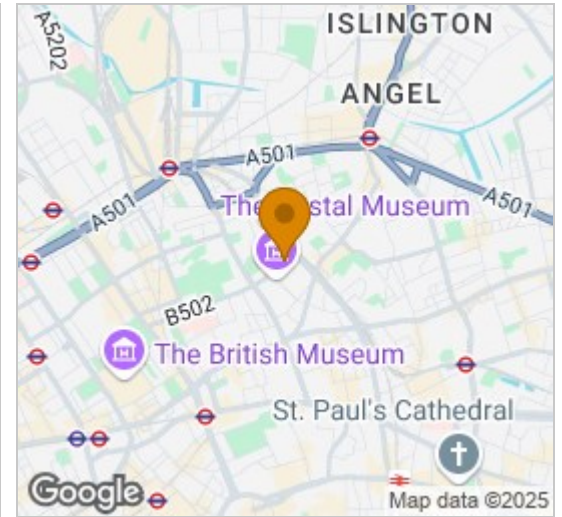
£1,200 Per Week



Floor Plan



Area Map



Energy Efficiency Graph



Viewing

By appointment. Contact us on 0207 052 1075 if you wish to arrange a viewing appointment for this property, or require further information.

- Ready to move in April - Furniture to be installed
- 861 sq ft (80 sqm) luxury two bed apartment
- Designed by WISH Interior architecture
- Residents' pool, sauna, steam room, gym and treatment room
- Short walk to Farringdon, King's Cross and Holborn Underground stations
- 24 hour concierge



This brand new, furnished 861 sq ft (80 sq m) two-bedroom, two-bathroom apartment at Postmark London is available for the very first time. Featuring a spacious west-facing balcony, this contemporary home is designed to provide a bright and welcoming space in one of London's most dynamic new communities.

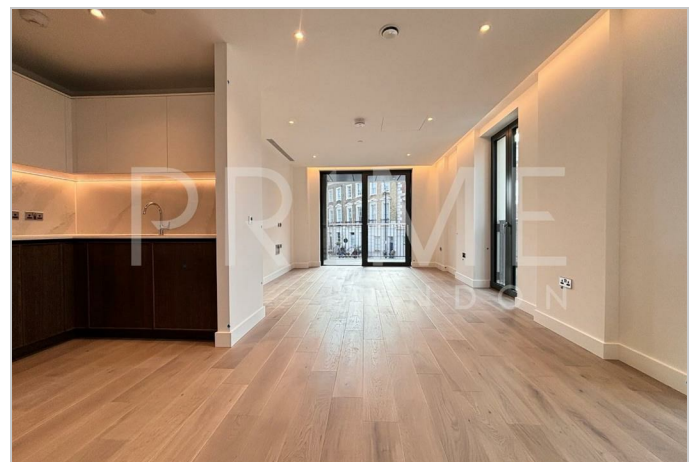
Inside, the open-plan U-shaped kitchen is fully fitted with Siemens appliances and sleek quartz stone countertops, seamlessly blending into the modern living area—ideal for both relaxing and entertaining. The master bedroom boasts an ensuite shower room, while the family bathroom includes a full-sized bath. Both bedrooms are equipped with ample inbuilt storage and spacious wardrobes for easy organization.

Postmark London spans four phases across a 6-acre site in Farringdon, offering 681 homes, over 20,000 sq. ft. of commercial space, and vibrant public spaces. Monograph Square, a key highlight, features 137 private residences centered around a serene communal garden.

Residents have access to exclusive amenities, including a cutting-edge wellness center with a swimming pool, jacuzzi, steam room, sauna, and gym, along with a 24-hour concierge and residents' lounge.

Enjoy outstanding connectivity: Farringdon is just an 11-minute walk away, with Russell Square and Chancery Lane each 12 minutes on foot, King's Cross within 14 minutes, and Holborn just 15 minutes away.

Please enquire further for details on the furniture pack ordered. This beautiful home offers the perfect combination of style, convenience, and luxury living in London.



These particulars, whilst believed to be accurate are set out as a general outline only for guidance and do not constitute any part of an offer or contract. Intending purchasers should not rely on them as statements of representation of fact, but must satisfy themselves by inspection or otherwise as to their accuracy. No person in this firm's employment has the authority to make or give any representation or warranty in respect of the property.