

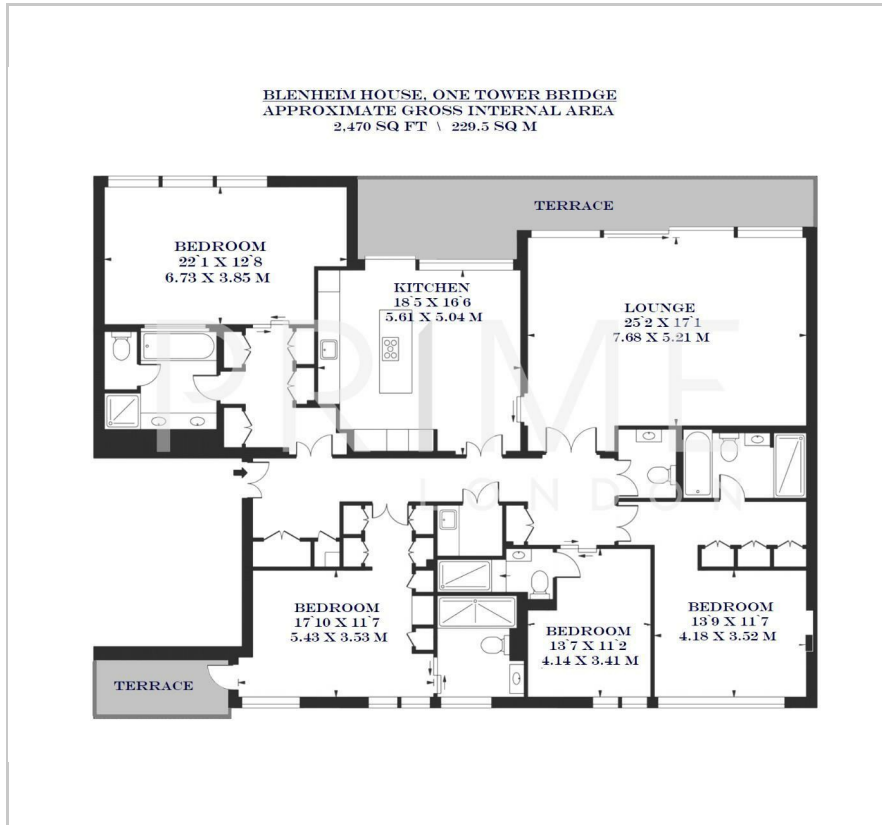
Blenheim House

Crown Square, London, SE1 2SF

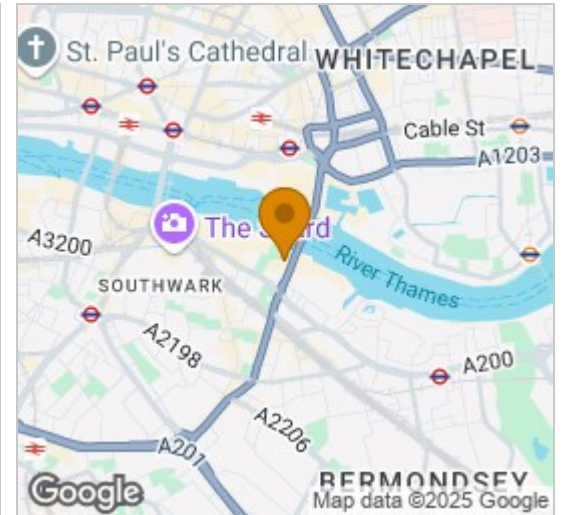
£4,604 Per Week



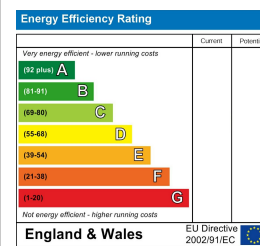
Floor Plan



Area Map



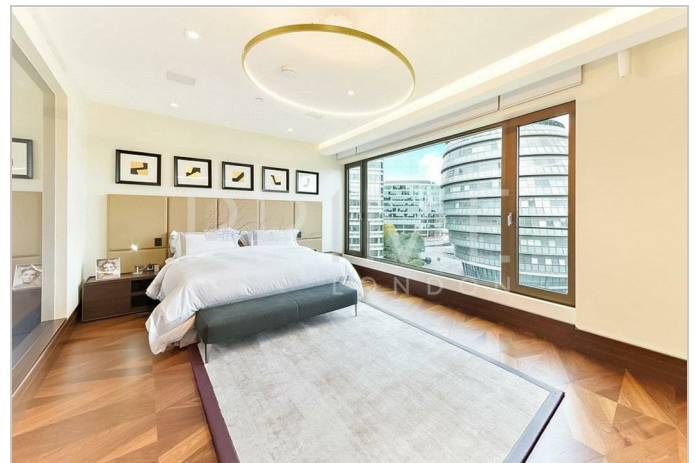
Energy Efficiency Graph



Viewing

By appointment. Contact us on 0207 928 6663 if you wish to arrange a viewing appointment for this property, or require further information.

- A premium river facing four ■ 2,470 sq ft (229.5 sqm) bedroom apartment
- Secure Parking space
- Views over Tower Bridge
- Lounge and virtual golf
- Residents' leisure facilities and 24 hour concierge



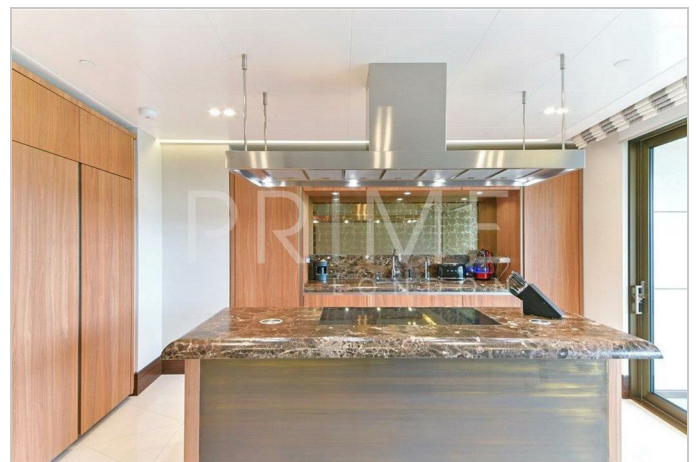
AVAILABLE NOW - This unique apartment of 2,470 sq ft (229.5 sqm) offers the ultimate in luxurious living, and is available for lease through Prime London.

The property is set in prime position in the desirable One Tower Bridge development, and being located on the front of Blenheim House enjoys stunning views of the River Thames, Tower Bridge, City skyline and Tower of London from both the entertaining space and principle suite.

Finished to an incredibly high standard throughout, this contemporary property comprises a large reception room with floor to ceiling windows that lead onto a balcony that stretches the length of the reception, offering uninterrupted views from both this and the stylish kitchen. The property further comprises master bedroom (with en suite facilities and views of the river) and a further three double bedrooms with en suite facilities.

Apartments in Blenheim House benefit from state of the art integrated systems using the very latest in smart home technology, underfloor heating, comfort cooling to principal rooms, ergonomically planned designer kitchens and individual finishes.

The development itself offers a residents only health club including pool, spa and gym facility, private courtyard garden, business lounge and virtual golf.



These particulars, whilst believed to be accurate are set out as a general outline only for guidance and do not constitute any part of an offer or contract. Intending purchasers should not rely on them as statements of representation of fact, but must satisfy themselves by inspection or otherwise as to their accuracy. No person in this firm's employment has the authority to make or give any representation or warranty in respect of the property.