



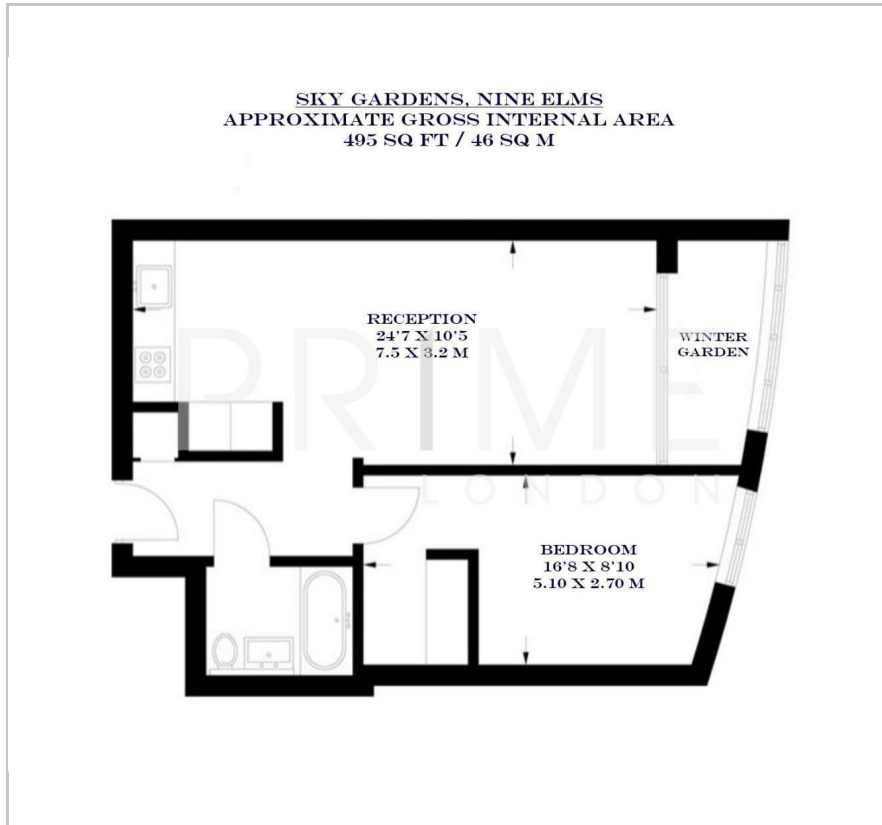
Sky Gardens

Nine Elms, London, SW8 2SY

Offers In Excess Of £500,000



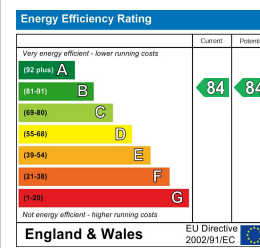
Floor Plan



Area Map



Energy Efficiency Graph



Viewing

By appointment. Contact us on 0207 928 6663 if you wish to arrange a viewing appointment for this property, or require further information.

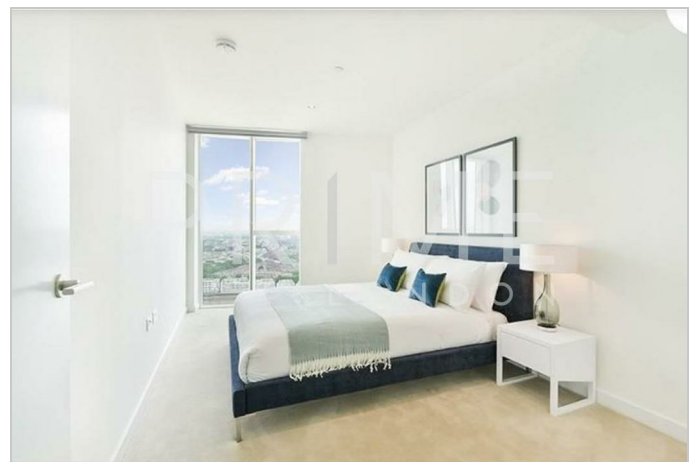
- One bedroom apartment
- Spacious winter garden
- Located close to Vauxhall's
- 495 sq ft (46 sqm)
- Resident's gym and roof garden
- 24 hour concierge transport links

This bright one-bedroom apartment in the highly sought-after Sky Gardens development in Nine Elms is offered for sale chain-free through Prime London.

Spanning 495 sq ft (46 sqm), the property features an open-plan reception area with a fully fitted kitchen that opens onto a spacious winter garden, a large bedroom, and a bathroom. Additional highlights include comfort cooling and underfloor heating.

Residents at Sky Gardens enjoy access to a state-of-the-art gym on the eighth floor, a 24-hour concierge, and a roof garden on the thirty-fourth floor.

Sky Gardens is conveniently located for Vauxhall's transport links, including rail, tube, bus, and river taxi services. Local amenities include Waitrose, Sainsbury's, Argos, Starbucks, and a variety of restaurants at St. George Wharf.



These particulars, whilst believed to be accurate are set out as a general outline only for guidance and do not constitute any part of an offer or contract. Intending purchasers should not rely on them as statements of representation of fact, but must satisfy themselves by inspection or otherwise as to their accuracy. No person in this firm's employment has the authority to make or give any representation or warranty in respect of the property.