

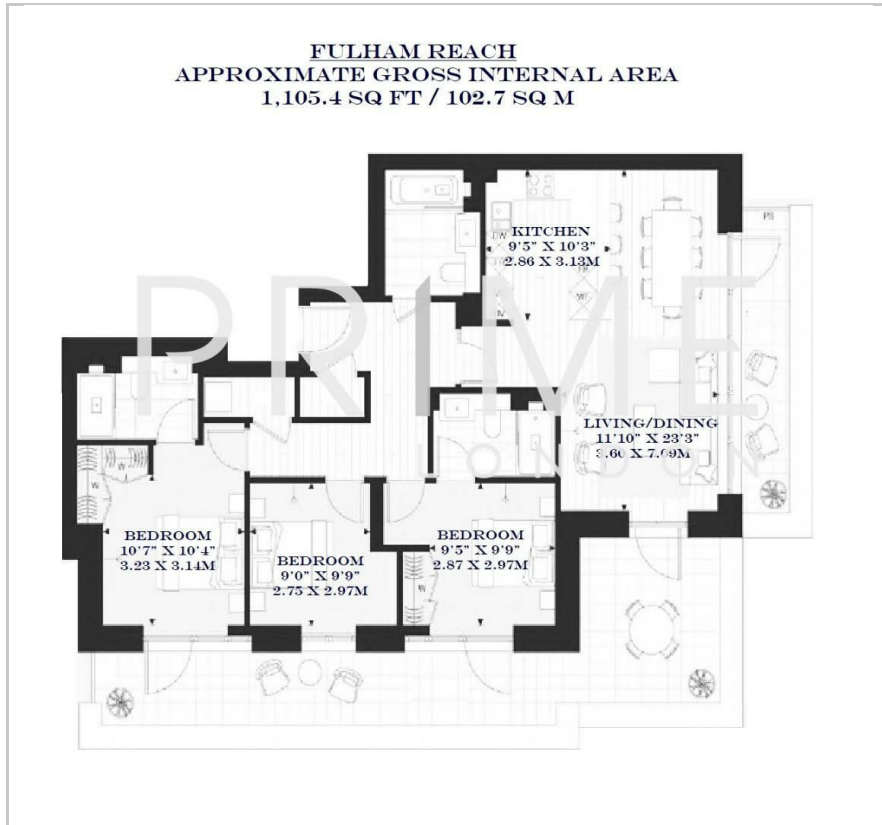
## Holland House

Parr's Way, Fulham Reach, W6 9YJ

£1,299 Per Week



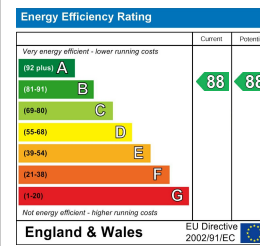
## Floor Plan



## Area Map



## Energy Efficiency Graph



## Viewing

By appointment. Contact us on 0207 052 1075 if you wish to arrange a viewing appointment for this property, or require further information.

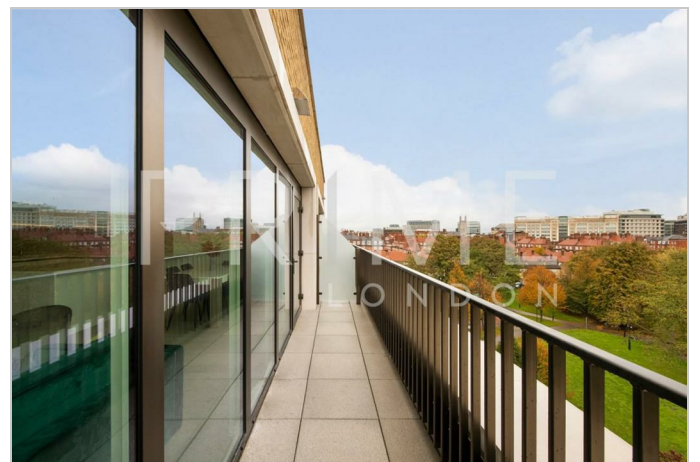
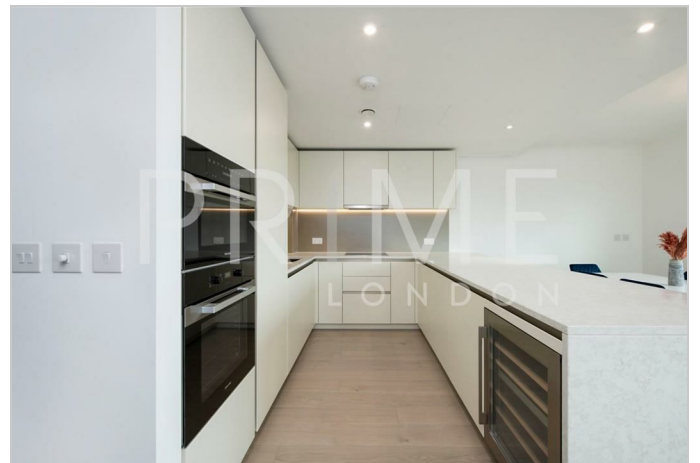
- Penthouse Style Apartment
- 1105 sq ft / 103 sq m
- Large wrap-around terrace
- Cinema, virtual golf, and wine cellar
- Three double bedrooms (two with ensembles)
- Secure parking space
- Pool, sauna, steam room and treatment room
- 24 hour concierge

This stunning three-bedroom penthouse apartment offers luxurious living with breathtaking views across London, available for rent through Prime London. Finished to the highest specifications, this brand-new property includes a secure parking space.

The apartment features an expansive open-plan reception and dining area that flows seamlessly into a semi-separated, state-of-the-art kitchen. The kitchen boasts integrated Miele appliances, a wine cooler, and a sleek marble worktop, perfect for both cooking and entertaining. Large windows flood the space with natural light and provide access to a generous north and east-facing terrace, ideal for enjoying panoramic views of the city.

The master suite is a standout feature, offering a spacious dressing area with built-in wardrobes and a luxurious five-piece en-suite bathroom. The two additional double bedrooms each come with built-in storage and private three-piece en-suite bathrooms. A versatile third bedroom, perfect as an office or guest room, shares a conveniently located third bathroom adjacent to the living area. Additional storage space can be found in the hallway, including a handy utility cupboard.

The apartment is equipped with comfort cooling and underfloor heating throughout, ensuring year-round comfort. Residents also have access to a range of exclusive on-site amenities, including a state-of-the-art gym, swimming pool, virtual golf, wine storage, and a cinema screening room.



These particulars, whilst believed to be accurate are set out as a general outline only for guidance and do not constitute any part of an offer or contract. Intending purchasers should not rely on them as statements of representation of fact, but must satisfy themselves by inspection or otherwise as to their accuracy. No person in this firm's employment has the authority to make or give any representation or warranty in respect of the property.